

BACK-TO-SCHOOL

PRODUCT GUIDE 2025



Your **One Source** for a **Thriving Practice**

Practices are unique and constantly evolving. **Rely on Us** for customized solutions that empower optimal patient & practice outcomes.

www.henryschein.com/medical | **1.800.772.4346** 8am-8pm (et)

California customers please use website when ordering for Prop 65 information.



Be Prepared for a HEALTHY BACK-TO-SCHOOL SEASON

Back-to-school season is a critical time for pediatric practices—make sure yours is fully prepared with the essential tools and trusted products to support your young patients. From vaccinations and vision screenings to physical exams and infection prevention, Henry Schein Medical is your single-source partner for back-to-school readiness.

With decades of experience supporting physicians, Henry Schein delivers more than just products—we offer tailored solutions, fast shipping, and reliable service to help your practice run efficiently and deliver high-quality care. Whether you’re restocking routine pediatric vaccines, updating your exam room supplies, or streamlining patient flow, we make it easy to find what you need and get it fast. Explore our Back-to-School Guide to discover a full range of medical supplies, diagnostic tools, PPE, and more—all from brands you trust.



INDEX:

AEDs	10	Hypodermics	58–59	Scales	11
Cold Storage.....	61	Infection Prevention & Control	40–43	Specimen Collection	57
Diagnostic Equipment.....	3–10	Oral Hygiene	56	Surgical Instruments.....	28
Exam Gloves.....	33–34, 36	Orthopedics	27	Surgical Products	29–30
Exam Room Disposables.....	15–18	Over-the-Counter (OTC)	52–54	Vaccines.....	48–51
Exam Room Equipment	12	Patient Monitoring	13–14	Waste Management.....	60
Face Masks.....	36–39	Pharmaceuticals	44–47	Wound Care.....	19–26
Flu.....	Back Cover	Point-of-Care Testing.....	62–79	Wound Closure	30–32
Health and Beauty Care (HBC).....	55	Practice Green	35–36		

80% OF VISION DISORDERS CAN BE PREVENTED OR CURED.¹

Learn more about quick, touchless vision screening and EMR connectivity with the **Welch Allyn SpotConnect** app that helps streamline clinical workflows.



Contact your Henry Schein representative or visit hillrom.com/spotvisionscreener to learn more.

Reference:

1. "80% of Visual Impairment Can Be Avoided or Cured." Central European Journal of Public Health 12, no. 1 (March 2004): 31.

Baxter, Hillrom, Spot, SpotConnect and Welch Allyn are trademarks of Baxter International Inc.

US-FLC158-250023 (v1.0) 04/2025

Welch Allyn Spot[™] Vision Screener BAXTER



- A handheld, portable device designed to help users quickly and easily detect vision issues on patients from 6 months of age through adult. Spot screens both eyes at once from a nonthreatening 3-ft distance. The touch-screen display allows for one-touch activation, simple management of patient data entry, and easy configuration for both vision screening and autorefraction applications.
- Supports AAP screening guidelines for early detection of amblyopic risk factors
 - Automated screening provides thorough, objective, and easy-to-understand results
 - Easy to use, easy to implement, with minimal user training required
 - Adequately powered for mass screening events
 - Captures readings 97% of the time, helping to screen otherwise difficult patients
 - Wireless printing and WiFi-enabled for easy export of data
 - Manual exports available via USB port
 - Uses lights and sounds to help engage children
 - Convenient carrying case

#VS100S-B, Vision Screener Set
(497-0004).....ea



Welch Allyn RetinaVue 700 Imager BAXTER

As the latest addition to the RetinaVue care delivery model family, the RetinaVue 700 Imager makes retinal exams simple and affordable for primary-care applications. This easy-to-use smart camera offers an automated retina imaging experience, featuring auto-alignment, auto-focus and auto-capture. It provides the user with flexible options, including EMR connectivity and WIFI for efficient Information transfer and seamless integration with existing clinical workflows.

- 2.5-mm small-pupil capability requires little-to-no chemical dilation
- 60° field of view
- HIPAA/HITECH-compliant RetinaVue Network software has end-to-end data encryption
- RetinaVue Network software is hosted on the Microsoft Azure cloud
- Small, handheld design is perfect for performing retinal exams in busy clinics and mobile health-care applications
- Can help improve HEDIS, Star, and HCC risk factors by closing gaps for patients living with diabetes

#RV700-B
(136-5631).....ea

Welch Allyn SureTemp[®] Plus 690 Electronic Thermometer BAXTER

Combines the speed of ear thermometry with the accuracy and reliability of traditional oral thermometry. Takes fast, 4–6-second oral temperatures, 10-second pediatric axillary and rectal temperatures, and 15-second adult axillary temperatures.

- Accurate to within $\pm 0.2^{\circ}\text{F}$ (0.1°C)
- Interchangeable, removable probe wells to reduce the risk of cross contamination
- Large LCD that can display temperatures in Fahrenheit or Celsius
- Last-temperature recall
- Mode selection and recall buttons
- Four different temperature modes
- Convenient storage for 25 probe covers
- Takes about 6000 readings on 3 AA batteries (included)

Thermometer with Oral Probe, Well, and 4-ft Cord
(203-3856).....ea



Thermometer with Wall Mount, Oral Probe, Well, and 4-ft Cord
(178-8374).....ea

Thermometer with Wall Mount, Oral Probe, and 9-ft Cord
(454-2689).....ea

Probe Covers
(566-0460).....250/sleeve

Wall Holder Mount for Thermometer
(206-8985).....ea

Oral/Axillary Probe, Well, and 9-ft Cord
(695-8954).....ea

Rectal Probe, Well, and 4-ft Cord
(741-8045).....ea

Welch Allyn Braun ThermoScan[®] PRO 6000 Ear Thermometer BAXTER

Offers speed and accuracy for all types of patients. Exclusive ExacTemp technology provides an active user feedback system to ensure proper positioning and improved accuracy. Lightweight, simple, fast, and accurate. Preheated probe tip and sensor provide reliable temperature readings. Has automatic probe-cover eject button for quick-and-easy disposal of used probe covers. 3-year limited warranty.

- Innovative PerfecTemp[™] technology adjusts for variability in probe placement
- ExacTemp[™] technology detects stability of the probe during measurement
- Designed to take quick and accurate readings, to improve patient satisfaction
- 60-second pulse timer assists with manual measurement of pulse rate and respiration

- Electronic security features help prevent theft and loss
- Small or large cradles for probe cover storage that pop up for easy attachment
- Optional charging station stores 200 probe covers, with rechargeable battery
- 6-ft or 9-ft security tether options keep device attached to cradle

#06000-200, Thermometer
(124-3558).....ea

#06000-005, Probe Covers
(566-0557).....20/box



Welch Allyn Green Series[™] 777 Integrated Wall System BAXTER

#777-PM2WAS-US, With PanOptic Basic LED Ophthalmoscope, MacroView Basic LED Otoscope, BP Aneroid, Ear Specula Dispenser, and SureTemp Plus Thermometer
(140-1989).....ea

#777-PM3WAS-US, With PanOptic Plus LED Ophthalmoscope, MacroView Plus LED Otoscope for iExaminer, BP Aneroid, Ear Specula Dispenser, and SureTemp Plus Thermometer
(140-2495).....ea



#777-SM2WAS, With Coaxial LED Ophthalmoscope, MacroView Basic LED Otoscope, BP Aneroid, Ear Specula Dispenser, and SureTemp Plus Thermometer
(140-1801).....ea

#777-SM2WAX, With Coaxial LED Ophthalmoscope, MacroView Basic LED Otoscope, BP Aneroid, and Ear Specula Dispenser
(140-1799).....ea



Welch Allyn Harvey™ Elite® Stethoscope BAXTER

High-quality stainless steel chest piece and binaural designed for durability provide superior performance throughout the entire acoustic range.

- Stainless steel chest piece
- Dual lumen
- Not made with natural latex
- 10-year warranty

#5079–122, 22"	ea
(513-7857).....	
#5079–125, 28"	ea
(513-0832).....	



Welch Allyn Professional Stethoscope BAXTER

Single Lumen, Double Head
Lightweight, comfortable, and affordable.

- Excellent acoustics and superior design for accuracy
- Stainless steel chest piece
- Comfort sealing ear tips conform to the shape of ear canals for soft, airtight fit
- Adjustable binaurals
- Nonlatex, flexible PVC tubing

Pediatric	ea
(513-4858).....	
Adult	ea
(101-4434).....	

Shown in black; other colors available.



Welch Allyn Tycos® DS66 Trigger Hand Aneroid BAXTER

An innovative trigger-release design for easy operation.

- Smooth, one-finger control provided by trigger-deflation valve
- Large, easy-to-read dial face
- Complete with adult cuff in a zippered case
- 15-year calibration warranty
- Latex-safe

#5098-29, Child	ea
(776-8636).....	
#5098-27CB, Adult, with 2-Piece Cuff and Bladder	ea
(566-2596).....	
#5098-30, Print Multi-Cuff Kit with Durable, One-piece Cuff (Child Print, Small Adult, Adult, and Large Adult)	ea
(120-1050).....	
#5098-31, Gauge and Bulb Only	ea
(566-7457).....	
#5098-27, Adult, Black, with Durable One-piece Adult Cuff	ea
(513-6847).....	
#5098-28, Large Adult	ea
(513-7156).....	



Welch Allyn Tycos® Classic-Style Hand Aneroid BAXTER

With Velcro® cuff, gauge, bulb, and valve combined into one unit.

- Weighs only 14½ oz
- Cast-iron housing for durability
- Feather-touch pressure control releases air smoothly and evenly
- Zippered case
- Lifetime calibration warranty

#5098-02, Adult	ea
(513-1005).....	



Welch Allyn Pocket Aneroid Sphygmomanometer BAXTER

The time-tested standard in blood pressure instruments. With Velcro® cuff, zippered case. Not made with natural latex.

- Certified accurate to ±3 mm Hg
- Mercury-free and nonlatex for safety
- Ruby-jeweled movement for long life
- Laser-engraved dial face for accuracy
- One-piece cuff is more durable and easier to use
- Lifetime warranty
- Thermally treated diaphragm maintains calibration
- Zinc die-cast housing for mechanical stability
- Recessed dial face reduces parallax
- Polyester zipper case

#5090-02, Adult, Standard	ea
(513-1083).....	



Welch Allyn Reusable Polypropylene Otoscope Specula BAXTER

For use with #20200, #21700, and #20202 models. Reusable and lightweight, yet durable. May be autoclaved, boiled, or sterilized in solution.

#22002, 2 mm	ea
(566-6882).....	
#22003, 3 mm	ea
(566-9142).....	
#22004, 4 mm	ea
(566-1930).....	
#22005, 5 mm	ea
(566-0329).....	
#22009, 9 mm	ea
(566-8228).....	
#22100, Complete Set	ea
(566-5713).....	
Contains: 1 of ea.: 2 mm, 3 mm, 4 mm, 5 mm & 9 mm.	



Welch Allyn Pneumatic/ Operating Otoscope Head BAXTER

Ultrasealed for easy pneumatic otoscopy.

#20200, with Tips	ea
(566-2532).....	



Green Series™ 777 Integrated Wall System

HENRY SCHEIN®

All models include a BP aneroid, an ear specula dispenser, and a SureTemp Plus thermometer.

#777-PM2WAS-HS, With PanOptic Basic LED Ophthalmoscope and MacroView Basic LED Otoscope (570-2666).....ea

#777-PM3WAS-HS, With PanOptic Plus LED Ophthalmoscope and MacroView Plus LED Otoscope for iExaminer (570-2665).....ea

#777-SM2WAS-HS, With Coaxial LED Ophthalmoscope and MacroView Basic LED Otoscope (570-2667).....ea

#777-SM2WAX-HS, With Coaxial LED Ophthalmoscope, MacroView Basic LED Otoscope, BP Aneroid, and Ear Specula Dispenser (Does not include SureTemp Plus Thermometer.) (570-2668).....ea



Fingertip Pulse Oximeter

HENRY SCHEIN®

- Adult and pediatric use: ideal for all specialties
 - Range for SpO₂: 70%–100%
 - Range for pulse: 30–235 bpm
 - Dual-color LED with display modes and brightness control
 - Includes pulse bar and plethysmogram
 - Visual and audible low-battery alarm
 - 2 AAA alkaline batteries with 30 hours of continuous use
 - Electromagnetic compatibility
- (570-3222).....ea



EasyOne® Air Spirometer

HENRY SCHEIN®

The all-in-one revolution in lung-function testing. Built for health-care providers large and small, EasyOne Air puts the power of the most advanced spirometry testing tools in the palm of your hand. Revolutionary TrueFlow ultrasound technology provides unprecedented accuracy and reliability. Equipped with ready-to-use EMR connectivity and a user-friendly interface, EasyOne Air makes the best in lung care available anywhere.

- Portable and PC-based solution
- Large, color touch screen
- Wireless connectivity to the PC via Bluetooth
- Instant interpretation based on ATS/ERS guidelines
- Rechargeable battery
- Pediatric incentive screens available with EasyOne Connect
- Calibration-free
- Compatible with EasyOne Connect

#2500-2HS, Spirometer (570-0683).....ea

#2050-1HS, Spirette Mouthpieces (570-0383)..... 50/case

#2050-5HS, Spirette Mouthpieces (570-0384).....200/case



Aneroid Deluxe Blood Pressure Cuff

HENRY SCHEIN®

- Contemporary black enamel, 300mm-Hg, CE-marked, no-pin stop manometer provides day-in, day-out dependability
- Nylon cuff with proprietary Size Guide™ marking system prevents miscuffing
- Dip-molded latex inflation bladder withstands heavy use
- Chrome-plated brass air-release valve
- Leatherette carrying case with durable nylon zipper
- Assembled, inspected, and packaged in the USA from foreign components

Black.....ea

Specify:
Small Adult (112-6064)

Adult (112-6065)

Large Adult (112-6066)



Pro Plus Series Professional Stethoscope

HENRY SCHEIN®

Combination adult-size chest piece is precisely machined to exacting tolerances from surgical stainless steel for outstanding performance and rugged durability. Available in 3 striking colors for departmental coding or personal identification.

- Extra-large bell (1 $\frac{3}{8}$ " diameter) for unsurpassed low-frequency response
- Ultrasensitive diaphragm (1 $\frac{7}{8}$ " diameter) for greater amplification and crisper high-frequency response
- Color-coordinated nonchill bell and diaphragm retaining rim for patient comfort
- Stainless steel binaurals with double-leaf internal spring fixed at 15° angle for greater comfort
- Reinforcing yoke molded into flexible 22" PVC "Y" tubing
- Deluxe PVC ear tips (in small and large) for the ultimate in wearing comfort and acoustic seal
- Spare diaphragm included
- Not made with natural rubber latex
- Scope ID tag included
- Lifetime warranty
- Weight: 6.5 oz
- Overall length: 31"

Stethoscope.....ea

Specify:

Black (900-4815) Navy (900-4817)
Burgundy (900-4816)



Peak Flow Meter

HENRY SCHEIN®

Helps clinicians measure, monitor, and treat respiratory conditions such as asthma or COPD.

- Designed for single-patient use to measure the peak expiratory flow rate
- Covers full and low range
- Measurement range: Full (0–800 L/min) ranges
- Suitable for adults and children
- Mouthpieces not made with natural rubber latex

Peak Flow Meter

(570-1152).....ea

Mouthpieces with One-Way Valve

(570-1112).....100/case

IQVitals® Zone™ Vital Signs Wireless Monitor MIDMARK

The only wireless vital signs monitor that automatically connects to a computer using zero clicks, importing data directly into the EMR to eliminate manual transcription errors. Using Midmark Zone™ technology, the IQVitals wireless monitor connects to a computer without cables or manual pairing. The Serenity BP™ linear deflation system, designed by Midmark, delivers quick and accurate measurements while ensuring greater comfort for the patient. All functions can be operated at the point of care via the computer or the user-friendly touchscreen. Each IQVitals Zone device includes an Exergen TemporalScanner™ thermometer. Key features:

- Rechargeable lithium-ion battery
- Non-invasive oscillometric blood pressure method
- Exergen TemporalScanner infrared thermometer
- Masimo or Nellcor SpO₂ measurement options
- 3 mounting options to suit any workflow

#4-000-0724, Monitor with BP, Temp & Masimo SpO ₂	
(127-9083).....	ea
#4-000-0722, Monitor with BP, Temp & Nellcor SpO ₂	
(140-5080).....	ea
#4-000-0720, Monitor with BP & Temp	
(141-3660).....	ea



Reusable Blood Pressure Cuffs MIDMARK

Designed for use with the Midmark Digital Vital Signs Device, these cuffs combine durability, precision, and patient comfort. Engineered to be leak-resistant and long-lasting, they deliver consistent, accurate, dependable readings. Crafted with patient care in mind, they provide a comfortable fit, ensuring a positive experience for both clinicians and patients. Available in a variety of sizes to accommodate a broad range of patients, they are an economical and practical solution for health care providers seeking high-quality performance and versatility.

#3-009-0068, Infant	
(116-0749).....	ea
#3-009-0070, Child	
(116-0750).....	ea
#3-009-0062, Small Adult	
(116-0751).....	ea
#3-009-0064, Adult	
(116-0752).....	ea
#3-009-0066, Large Adult	
(116-0753).....	ea
#3-009-0072, Adult Long	
(116-0754).....	ea
#3-009-0074, Large Adult Long	
(116-0755).....	ea
#3-009-0076, Thigh	
(116-0756).....	ea



IQvitals® Touch-screen Device MIDMARK

This affordable, Windows®-based, touch-screen device provides automated blood pressure, temperature, SpO₂ and pulse rate readings with a touch of the screen. An alphanumeric keyboard allows for fast and easy entry of patient data, and the intuitive design increases productivity and simplifies staff training. IQvitals™ can be used as a stand-alone unit, connect to a computer with IQmanager™ software, or will connect seamlessly to select EHR/EMRs.

#1-100-1605, IQvitals™ Thermal Printer	
(115-8229).....	ea
#1-100-1603, Fairbanks® TeleWeigh™ Digital Scale	
(115-8149).....	ea
#3-004-2000, IQvitals™ Mobile Cart	
(115-7758).....	ea
#4-000-0540, IQvitals™ with Touchscreen, Blood Pressure and Exergen Temporal Scanner™	
(145-5401).....	ea



GAMMA™ G5 Aneroid Sphygmomanometer MIDMARK

This sphyg sets the standard for reliability and durability in its class. Its core design features a robust housing and spoon, crafted from high-strength, impact-resistant, 2-component thermoplastic. Premium construction ensures long-lasting performance, even under demanding conditions. Its innovative shock-absorbing system is meticulously designed to safeguard the device against impact and vibration. This intricate system not only enhances durability, but also ensures precise and consistent performance over time.

#M-000-09-230-166, Sphygmomanometer with 2 Single-Tube Cuffs (Adult & Large Adult)	
(116-5381).....	ea



You may never have to change an otoscope or ophthalmoscope bulb again.

HEINE is the first company to replicate the color-rendering index properties of halogen bulbs in a cost-effective, durable LED solution. So, you can **see colors as they are in their natural state** without the maintenance costs of halogen bulbs.

**For more information, call 1.800.P.Schein
or visit: [henryschein.com/medical](https://www.henryschein.com/medical)**

HEINE is a registered trademark of HEINE Optotechnik GmbH + Co. KG.
© 2025 Midmark Corporation, Versailles, Ohio USA



NEW Midmark HEINE® Instrument Wall Set Kits

Equip your exam room with the essential diagnostic tools you need—conveniently within reach. Midmark HEINE Instrument Wall Set Kits come complete with a sleek instrument panel, LED Otoscope, LED Ophthalmoscope and a tip dispenser. Customize your kit with options such as a sphygmomanometer or Midmark® Digital Vital Signs Device.





Proscope™ 660 and 670 Series Stethoscopes AMERICAN DIAGNOSTIC CORP.

Nurse-scopes combine lightweight design and sensitive acoustics. Similar to the 660 series, the 670 series features a combination diaphragm/bell dual-head chest piece with nonchill ring.

The 660 series features:

- Lightweight aluminum chest-piece construction
- Diaphragm-only, nurse-style chest piece
- Adjustable chrome binaurals
- Flexible, 22" 1-piece molded Y PVC tubing

660 Series.....ea

Specify:

#660N, Navy Blue
#660BK, Black

(130-2573)
(499-0725)

670 Series.....ea

Specify:

#670N, Navy Blue
#670BK, Black
#670G, Gray

(130-4588)
(102-2463)
(185-8499)



ZOLL AED Plus® ZOLL

Bringing Lifesaving Defibrillation to Everyone
The only AED with CPR feedback and an ECG waveform. By supporting CPR as well as defibrillation, this device can help every unresponsive victim. Features Real CPR Help®, a tool that is able to actually see what user is doing and provides audio and visual prompts to help them do it with confidence and clarity.

- Provides a one-piece electrode for accurate placement
- Uses consumer lithium batteries that are easy to replace, long-lasting, and inexpensive

Semi-Automatic Unit

(866-7559).....ea

Contains: AED, electrodes, batteries, carry case, ECG, wall-mount bracket & operator's guide.

Fully Automatic Unit

(119-7910).....ea

Contains: AED, electrodes, batteries, carry case, ECG, wall-mount bracket & operator's guide.

CPR-D padz®—Adult Defibrillator Pad

(253-2611).....ea

Pedi padz® II—Pediatric Electrode Pad

(203-7054).....ea

Type 123 Lithium Batteries

(610-4769).....10/pkg

Soft Carrying Case

(106-1937).....ea

3D Wall Sign

(110-5384).....ea

AED Plus Simulator

(499-7385).....ea



Advantage™ 2200 Fingertip Pulse Oximeter

AMERICAN DIAGNOSTIC CORPORATION

This portable device is perfect for use at home, during sports activities, or in aviation. It offers precise readings with an SpO₂ accuracy of +/-2% and a heart rate accuracy of +/- 5 BPM.

Key features include:

- 2 adjustable display modes
- Bright red LED display
- Compatible with finger thickness of 0.31" to 0.79"
- Includes a carry lanyard and instruction booklet
- Powered by 2 AAA batteries (included)
- 1-year limited warranty

(124-6142).....ea



Powerheart® G5 AED ZOLL

Features Intellisense™ CPR, which provides corrective feedback to ensure delivery of high-quality compressions. One-button, dual-language functionality and comprehensive self-tests give rescuers the confidence to act.

- Intellisense™ CPR feedback provides real-time voice and text corrective prompts for CPR quality
- Rescue Ready® conducts regular, automatic self-tests on pads, battery, and internal circuitry
- RescueCoach™ guides users through each critical step of the rescue with user-paced voice/text prompts
- Dual language change from primary to secondary language in the push of a button

#G5S80C-S, Semi-Automatic

(139-5101).....ea

#G5A80C-S, Fully Automatic

(139-5102).....ea



Advantage™ 6015N Digital Wrist Blood Pressure Monitor

AMERICAN DIAGNOSTIC CORPORATION

Featuring Smart Logic™ technology and advanced memory capabilities, this monitor measures systolic and diastolic pressure as well as pulse. The Smart Logic™ technology determines the ideal inflation level.

Key features:

- Pressure accuracy: +/- 3 mm Hg
- Pulse range: 40–200 BPM
- Stores the last 99 readings for 2 users
- Wrist cuff fits sizes from 5.3" to 7.7"
- Automatic shut-off feature
- Made without natural rubber latex
- Includes 2 AAA batteries and a compact storage case
- 5-year warranty

(216-1353).....ea



AED Pro® Automated External Defibrillator ZOLL

An external defibrillator that provides advanced capabilities for BLS and ALS users with innovative Real CPR Help® technology for rate and depth of chest compressions. See-Thru CPR® capability filters CPR chest compressions, displaying the underlying cardiac rhythm. Unit is unmatched in its ruggedness and durability and is ideal for any environment.

- Available as semiautomatic only or semiautomatic with manual override for ALS professionals
- Built-in internal memory and external USB memory technology allows expanded data storage capacity and maximum flexibility for data management and transfer
- Electrodes and battery compatibility with ZOLL M Series®, E Series®, and R Series® professional defibrillators
- ECG monitoring with 3-lead cable and high-quality display
- Unrivaled battery options (long-life disposable or rechargeable) that meet specific needs

(869-6270).....ea

seca 777 Physician Scale SECA

With Eye-Level Display

The ideal solution for weighing and measuring. The oversized, low-profile, full-metal platform accommodates all body types, and the tilt-proof safety design ensures extra stability. In addition, the scale offers a built-in measuring rod with a 4"-90" measuring range, and the large, rubber-coated casters allow for convenient transportation. The scale features a USB interface for PC connectivity solutions. An 8-year warranty (4 times the industry standard) is included at no extra cost.

- Capacity: 550 lb/50 kg
- Built-in measuring rod with 4"-90" measuring range
- Robust, oversized, low-profile, full-metal platform
- Anti-tip column safety design
- Large, rubber-coated casters for easy transport
- Display is swappable to left or right side
- USB interface for PC connectivity
- 8-year warranty (4 times the industry standard)

#7771821004, Scale
(139-2675).....ea
#477 0000 009, Optional Integrated Handrail
(138-4356).....ea
#459 0000 009, Panda Accessory For Seca Scale
(138-5120).....ea



Digital Platform Scale HEALTH-O-METER

With Extra-Wide Handrails and Digital Height Rod

Designed to meet the needs of doctors' offices, hospitals, clinics, and acute and long-term care facilities, the scale's keypad features antimicrobial protection, a display head that swivels 180°, "live" handrails that allow the patient to hold on for stability while the scale accurately measures weight and height, a large nonskid low-profile platform, industry-leading digital height rod, and wheels that enable portability. 100-240-volt adapter included (#ADPT30).

- Functions: Lb/kg conversion, lb/kg lockout, BMI, zero, tare, pre-tare, hold/release, reweigh, recall, auto zero, auto off, time/date, variable auto off time, audible/mute sound option, parent/child weighing function, and Everlock®.
- Capacity: 1000 lb/454 kg

#1100KL-EHR, Scale
(139-5838).....ea
#1100KL-BT-EHR, Scale with Wireless Connectivity
(140-1994).....ea



seca Mobile Handrail Scale with Digital Height Rod SECA

- Designed for mobile use
- Integrated digital height rod for automatic readings on the display
- Larger, durable wheels for enhanced mobility
- Robust steel handrail for stand-up assistance and added patient stability
- Spacious and hygienic glass platform made of break-resistant seca Bearclaw Glass®
- Customizable touchscreen display shows weight, height, BMI, and patient/user ID
- EMR-validated, enabling seamless data transmission directly to an EMR system
- Optional rechargeable battery pack (seca 453) provides more than 8 hours of continuous weighing and measuring
- Capacity: 800 lb/360 kg
- Graduation: 0.1 lb/50 gm
- 4-year warranty

#ONSHMITTNN
(145-9845).....ea



Eye-Level Digital Physician Scale HEALTH-O-METER

High-capacity 660 lb/300 kg primary-care scale provides the optimum in quality, reliability, and ease of use.

- Functions: lb/kg conversion, lb/kg lockout, BMI, zero, tare, pre-tare, hold/release, auto zero, auto off, reweigh, recall, and Everlock®
- Low profile, nonskid platform with reinforced base for added stability
- Integrated height rod with 30"-84¼" measuring range
- Wireless connectivity options available

#500KL, Scale
(106-6626).....ea
#500HB, Handlebar Accessory
(137-2640).....ea



Heavy-Duty Eye-Level Digital Scale HEALTH-O-METER

With Integral Digital Height Rod

Fast and easy-to-use digital height rod provides option to capture height measurement electronically and accurately. Operating functions (BMI, LB/KG Lockout, Hold/Release, Auto Zero, Tare, Zero Out, Auto Off) included. Eye-level rotating display can be read from almost any angle and allows for patient privacy and ease of use.

- Capacity: 600 lb/272 kg
- Weight: 38 lb

#600KL
(118-3183).....ea



seca 813 High-Capacity Digital Flat Scale SECA

For Individual Patient Use

High-capacity scale with a solid-steel frame that holds up to 440 pounds and features an extra-wide platform. Nonslip rubber base allows for safe standing during measuring. Tough rubber mat ensures a secure stance, and flat construction allows for easy accessibility.

- Large LCD display for easy reading
- Step-off function for weighing without turning on
- Capacity: up to 440 lb
- 17" x 1.9" x 14.7"

#8131321009
(108-7905).....ea



seca 212 Baby Bands Head Circumference Measuring Tape SECA

Head circumference (front side) and symmetry of the face (reverse side) can both be measured with this measuring tape of nonstretch Teflon® synthetic material. A practical dispenser (contains 15 tapes) ensures that they are stored safely with no risk of damage.

- Measuring range: 2"-23" (5 cm-59 cm)
- Graduations: 1/16"/1 mm

(276-5120).....15/pkg



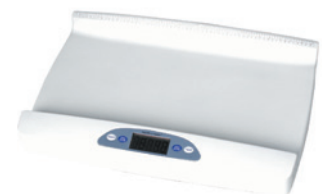
Digital Pediatric Scale with Extra-Wide Tray HEALTH-O-METER

High-performance digital pediatric scale with motion-sensing technology to capture the weights of even the most active babies.

- Capacity 44 lb/20 kg
- EMR connectivity
- Functions: Auto-Off, Auto-Zero, LB/KG conversion, and Zero-Out/Tare
- Additional features for #553KL: measuring tape, 1" LCD readout, EMR capable, and Hold/Release button
- Includes 6 AA batteries (#553KL); one 9V (#549KL)

#549KL, Scale
(110-0989).....ea

#553KL, Scale with EMR
(104-7675).....ea





FLEX High-Low PLUS Exam Table BREWER

Designed to enhance patient accessibility, safety, and provider efficiency. With its advanced high-low functionality, ergonomic design, and integrated safety features, this table supports a wide range of medical examinations while ensuring patient comfort.

- Adjustable height from 18" to 37"
- Fully compliant
- Integrated ComfortGrip Patient Assist Handles offer 700-lb weight capacity to ensure stability and durability for various patient needs
- Powered backrest and footrest enhance patient comfort and optimize provider's workflow efficiency
- Integrated safety grab bars offer additional patient support when accessing or exiting the table
- Optional EasyGlide Mobility System makes room reconfigurations and cleaning easier and more effective

Table..... ea

Specify:

#5801PLUS-PR46, Blue Fog	(147-2583)
#5801PLUS-MV821, Cool Gray	(147-2593)
#5801PLUS-AF906, Chateau Grey	(147-2592)
#5801PLUS-PR92, Gunmetal	(147-2595)
#5801PLUS-AF945, Flannel	(147-2594)

#3500687PLUS, EasyGlide PLUS Mobility Option
Accessory
(147-2249)..... ea



463 and 464 Exam/ Procedure Chair MTI

The most feature-packed, ADA compliant* chair on the market. Standard features include ComfortSync™ coordinated footrest, EasyView™ chair-back mounted switches, removable slide-back floating armrests, push-button 333° swivel base and oval articulating headrest.

- 725-lb patient load capacity
- 4 programmable positions
- Programmable home and ADA-compliant home positions
- Power lift, recline, and tilt (no tilt on 463)
- 21" seat width
- 18¾"-37" seat height (2" lower than any other ENT chair on the market)
- Removable upholstery: seamless or designer
- Tapered backrest for easier caregiver access
- Sturdy, all-steel frame

#463-002-80, Swivel Base, No Tilt
(136-8741)..... ea

#464-002-80, Swivel Base, With Tilt
(136-8744)..... ea

*ADA compliant with transfer support accessory for easy patient ingress/egress

Access High-Low PLUS Power Exam Table BREWER

Designed to deliver unmatched comfort, convenience, and durability, this table is the ideal choice for modern clinical environments. Engineered to meet the diverse needs of both patients and healthcare professionals with advanced features like ComfortGrip™ patient assist handles and ample storage options. 3-year warranty.

Key features:

- Adjustable height from 18" to 37", fully ADA Access Board compliant
- Extendable table length from 60" to 78" with 18" SafeGlide™ leg extension length
- Mayo Pass-Through Work Surface for multifunctional use
- 6 cubic feet of storage divided between a front drawer (19¾" x 19¼" x 4") and side drawers (22½" x 20¼" x 8")
- 450-lb weight capacity

#6000PLUS-PR46, Blue Fog
(147-3124)..... ea

#6000PLUS-PR57, Clamshell
(147-3138)..... ea

#6000PLUS-PR92, Gunmetal
(147-3136)..... ea



830 Series Procedure Chair MTI

The highly versatile 830 Series chairs are ADA compliant in all base versions (standard, swivel, or mobile) using the transfer support, providing easy patient ingress/egress, and equal access for patients with disabilities and caregivers. All 830 chairs come equipped with SmartTech™ technology to enhance safety, reduce energy consumption, and provide smoother movement, additional memory options, and more user preferences.

- 725-lb patient load capacity
- 4 programmable positions
- Programmable home and ADA-compliant home positions
- Power lift, back, tilt, and foot extension
- Hand and foot controls
- Oval articulating headrest
- 22" or 25" seat width
- 18¾"-39" seat height
- Leg rest features knee-break with 7" power foot extension
- Optional patient arms: removable, floating (compensating) arms, or seat rail or back rail mounted arms
- Removable upholstery: seamless or designer
- Tapered backrest for easier caregiver access
- Sturdy all-steel frame
- Multiple G2 accessory options

#829-001-80, Standard Base (22" seat width)
(135-8121)..... ea

#829-002-80, Swivel Base (22" seat width)
(139-4043)..... ea

#829-003-22, Mobile Base (22" seat width)
(140-6171)..... ea

#830-001-80, Standard Base (25" seat width)
(133-8866)..... ea

#830-002-80, Swivel Base (25" seat width)
(136-9044)..... ea

#830-003-22, Mobile Base (25" seat width)
(133-9127)..... ea





ePM 12MA Patient Monitor MINDRAY

Exceptional user interface and enhanced parameter functionality, delivering a monitoring solution to fit multiple care environments. Immediate and measurable benefits of the smartphone-like user interface that delivers 98% of all common monitoring functions with just 2 gestures, reducing time clinicians spend navigating monitor functions, and more time on what matters most: patient care. Advanced monitoring options are integrated: 3- and 5-lead ECG, SpO₂, NIBP, respiration, and temperature-supporting multiple clinical workflows. The ePM 12MA features a semimodular design with a plug-and-play module structure that adds monitoring functions such as CO₂ and multigas, where and when needed. The 12MA eGM multigas module automatically identifies and measures the inspired and expired values of O₂, CO₂, N₂O and 5 anesthetic agents, providing a compact, yet comprehensive OR monitoring solution. Manufactured with industry-leading plastics that stand up to the most stringent medical-grade cleaners. Concealed grab-and-go handle eliminates hard-to-clean crevices and eases clinical workflow while on the move. Flexible mounting options for bedside and transport.

- Dimensions: 12.2" x 11.4" x 6.7"
- Weight: 10.6 Lb.
- Warranty: 3 years

Semi-Configured/Modular.....Ea.

Specify:

Masimo SpO₂ (139-2126) Nellcor SpO₂ (139-2128)

ePM AG Module

(139-3276).....Ea.

CO₂ Module Adult/Pediatric

(137-8484).....Ea.



ePM 10A Configured Patient Monitor MINDRAY

Exceptional user interface and enhanced parameter functionality, delivering a monitoring solution to fit multiple care environments. Immediate and measurable benefits of the smartphone-like user interface that delivers 98% of all common monitoring functions with just 2 gestures, reducing time clinicians spend navigating monitor functions, and more time on what matters most: patient care. Advanced monitoring options include 3- and 5-lead ECG, SpO₂, NIBP, respiration, and temperature supporting multiple clinical workflows. ePM 10A has a compact, ergonomic design that is perfectly suited for healthcare facilities managing a steady flow of patients daily. Add optional CO₂ capability to aid clinicians to identify signs of patient deterioration due to respiratory distress. Manufactured with industry-leading plastics that stand up to the most stringent medical-grade cleaners. The concealed grab-and-go handle eliminates hard-to-clean crevices and eases clinical workflow while on the move. Flexible mounting options for bedside and transport.

- Dimensions: 10.6" x 9.9" x 6.3"
- Weight: 8.8 lb
- Warranty: 3 years

Integrated

Sidestream CO₂, Recorder.....ea

Specify:

Masimo SpO₂ (139-2003) Nellcor SpO₂ (139-2005)

Recorder.....ea

Specify:

Masimo SpO₂ (139-1920) Nellcor SpO₂ (139-1927)



iM60 Patient Monitor EDAN

The iM60 monitor spans accurate monitoring across different care environments, acuity levels, and clinical requirements. All data is clearly displayed on a 10½" color touch screen while providing real-time readings on NIBP, ECG, SpO₂, respiration, temperature, and optional EtCO₂.

#iM60.P, Patient Monitor with Printer
(974-0177).....ea

#iM60.CS.P, Patient Monitor with CO₂ and Printer
(974-0180).....ea

#iM60.P.MT, Patient Monitor with Printer and Rolling
Stand
(974-0185).....ea

#iM60.CS.P.MT, Patient Monitor with CO₂, Printer,
and Rolling Stand
(974-0186).....ea



M3 Vital Signs Monitor EDAN

The M3 Vital Signs Monitor is a light, compact, and portable device, ideal for spot-checks, triage, or the out-patient department. Its cost-effectiveness makes it available to all. Parameters include NIBP (manual or automatic), SpO₂, and quick oral temp.

#23.02.302050, Patient Monitor with NIBP
and SpO₂
(974-0026).....ea

#03.02.30212, Patient Monitor with NIBP, SpO₂,
and Oral Temp
(974-0041).....ea

#M3C.P.MT, Patient Monitor with NIBP, SpO₂, and
Oral Temp, Printer, and Rolling Stand
(974-0187).....ea

#VS.RT, Rolling Stand
(127-1081).....ea



iM50 Patient Monitor EDAN

Due to its lightweight and compact design, the new-generation iM50 patient monitor provides the perfect solution for transport or compact environments. Full parameters (NIBP, SpO₂, ECG, temperature, respiration, optional EtCO₂) are clearly displayed on a 8½" color touch screen.

#iM50.P, Patient Monitor with Printer
(974-0176).....ea

#iM50.CS.P, Patient Monitor with CO₂ and Printer
(974-0183).....ea

#iM50.P.MT, Patient Monitor with Printer and Rolling
Stand
(974-0188).....ea

#iM50.RT, Rolling-Stand
(127-1084).....ea

Rad-57® Handheld Pulse CO-Oximeter® MASIMO

#9216-U, Rad-57®, SpO ₂ Only (700-0668).....	ea
#3734, Rad-57® Kit with SpCO® Option, Adult Sensor (700-1444).....	ea
#3735, Rad-57® Kit with SpCO® Option (700-1303).....	ea
#3736, Rad-57® with SpCO® and SpMet® Options (700-1308).....	ea
#2406, rainbow RC4, 4 ft (118-6479).....	ea



rainbow® Reusable Sensors for rainbow® Devices (SpO ₂ , SpCO®/SpMet®) #2696, rainbow DCI, Adult, 3 ft (700-1273).....	ea
#2697, rainbow DCIP, Pediatric, 3 ft (499-9933).....	ea

Masimo Set® LNCS® Sensors and Cables MASIMO

LNCS, or low-noise cabled sensors, are compatible with Masimo SET® pulse oximeters and Nellcor sensor-compatible instruments without OxiMax®. #1863, LNCS DC-I Adult Reusable Sensor (114-1951).....	ea
#2653, LNCS DBI, Adult, Soft, 3 ft (499-9823).....	ea
#1864, LNCS DCIP Pediatric Reusable Sensor (116-0986).....	ea
#1859, LNCS Adtx Adult Sensor (114-1911).....	20/box
#2317, LNCS Adtx3, Adult, 3 ft (700-1279).....	20/box
#1860, LNCS Pdtx Pediatric Sensor (499-6226).....	20/box
#2318, LNCS Pdtx3, Pediatric, 3 ft (700-1280).....	20/box



#2918, LNCS E1®, Adult, Ear, 3 ft (700-1785).....	10/box
LNCS® Disposable, Adhesive SpO ₂ Sensors with Replacement Tape #2328, LNCS, Infant, 18" (116-0769).....	20/box
#2319, LNCS, Infant3, 3 ft (119-3255).....	20/box
#2329, LNCS Neo-L Neonatal Sensor (116-0770).....	20/box
#2320, LNCS, Neonatal/Adult, 3 ft (119-1696).....	20/box
LNCS® RED 20-Pin Patient Cables for Use with Masimo rainbow® SET® Devices #2055, Red LNC-04 LNCS Patient Cable, 4 ft (114-5834).....	ea
LNC Patient Cables for Use with Masimo SET® Devices #2364, LNC1, 1 ft (125-7805).....	ea
#2017, LNC-4 LNCS Patient Cable (700-1281).....	ea



Advantage™ 6021N Automatic Digital Blood Pressure Monitor AMERICAN DIAGNOSTIC CORPORATION

This fully automatic upper-arm digital blood-pressure monitor is designed for home use. It measures systolic and diastolic pressure as well as pulse. Equipped with Smart Logic Modulation (SLM) technology, it ensures a gentle inflation process for optimal comfort and accuracy. The monitor features a self-adjusting, extended-range non-latex D-bar cuff that fits arms from 8.7" to 16.5".

Key features:

- Automatic inflation and deflation control
- Irregular heartbeat detector
- Stores the last 99 readings with date and time stamp for 2 users
- Automatic shut-off function
- Made without natural rubber latex
- Includes 4 AA batteries
- 5-year warranty

(122-6355).....	ea
-----------------	----

Connex® Spot Monitor BAXTER

Features an easy-to-use, vivid touch-screen display and provides accurate vital signs measurement, including blood-pressure averaging, spot checking, interval monitoring and custom scoring across patient populations. Device connects wirelessly to an EMR and accurately sends vitals to the patient chart from the point of care to help improve efficiency.

- Designed for the physician-office environment with an easy-to-use, vivid touch-screen display
- More accurate hypertension diagnosis without slowing down your workflow thanks to automated blood-pressure averaging
- Improved capabilities for assessing respiratory conditions such as COPD, asthma, and community-acquired pneumonia (CAP), thanks to integrated professional-grade pulse oximetry
- Increase staff efficiency and eliminate data-entry errors with wireless transfer of vital signs directly into an EMR

7100 Base Models with Wired Connectivity #71XX-B, SureBP Non-invasive Blood Pressure (566-0464).....	ea
#71XT-B, SureBP, SureTemp (672-0176).....	ea
#71XE-B, SureBP, Braun Thermoscan PRO 6000 Ear Thermometer (124-6103).....	ea

#71WX-B, SureBP, Nonin SpO ₂ (672-0177).....	ea
#71WT-B, SureBP, Nonin SpO ₂ , SureTemp (566-0466).....	ea
#71WE-B, SureBP, Nonin SpO ₂ , Braun Pro6000 (124-5328).....	ea
7300 Bluetooth Connectivity Physician Office Models #73XT-B, SureBP, SureTemp (566-0465).....	ea
#73XE-B, SureBP, Braun PRO 6000 (124-8200).....	ea
#73WX-B, SureBP, Nonin SpO ₂ (672-0178).....	ea
#73WT-B, SurePB, Nonin SpO ₂ , SureTemp (672-0179).....	ea
#73WE-B, SureBP, Nonin SpO ₂ , Braun PRO 6000 (124-4801).....	ea
#73CT-B, SureBP, Covidien SpO ₂ , SureTemp (672-0175).....	ea
#73CE-B, SureBP, Covidien SpO ₂ , Braun PRO 6000 (125-8900).....	ea
#73MT-B, SureBP, Masimo SpO ₂ , SureTemp (566-0467).....	ea
#73ME-B SureBP, Masimo SpO ₂ , Braun PRO 6000 (124-7063).....	ea



YOUR TRUSTED COMPANION IN DISPOSABLE EXAM ESSENTIALS



graham
medical®
The Promise of Protection®

Henry Schein Sku	Description	Material	Color	Size	Case
(395-5110)	MediShorts®	Nonwoven	Blue	L/XL	50
(118-2689)	MediShorts®	Nonwoven	Blue	2/3XL	50
(395-4882)	Gown	Nonwoven	Blue	M/L	50
(395-0376)	Gown Scrim Reinforced Tissue	Scrim	Blue	XL	50
(395-7530)	Gown Scrim Reinforced Tissue	Scrim	Blue	L	50
(156-8437)	Pillowcase	Tissue/Poly	White	21" x 30"	100
(614-6084)	Towel 3PLY	Tissue	White	13.5" x 18"	500
(108-4415)	Towel 3PLY	Tissue/Poly	Blue	13.5" x 18"	500
(118-3932)	Drape 2PLY	Tissue	Blue	40" x 48"	100



Dri-Gard® Towels



2-Ply Tissue/1-Ply Poly

- Provide positive moisture barrier and quick absorbency
- Unique horizontal embossing pattern protects patient's clothing and increases the strength of the towel
- Made in the USA
- Not made with natural rubber latex

13" x 19" 500/case

Specify:

Aqua	(100-9276)	Lavender	(101-0476)
Beige	(100-3501)	Peach	(100-7384)
Blue	(100-7265)	Rose	(100-6341)
Gray	(100-1313)	White	(100-5715)
Green	(100-1350)	Yellow	(100-9704)



Dri-Gard® Plus Towels



3-Ply Tissue/1-Ply Poly

- Provide a positive moisture barrier with maximum absorbency
- Unique horizontal embossing pattern protects patient's clothing and increases strength of the towel
- Made in the USA
- Not made with natural rubber latex

13" x 19" 500/case

Specify:

Aqua	(100-9851)	Lavender	(101-6810)
Beige	(100-5015)	Peach	(100-7395)
Blue	(100-9825)	Rose	(100-2024)
Gray	(100-9545)	White	(100-7908)
Green	(100-4479)	Yellow	(100-3395)



Dri-Gard® Towels



Teddy Bear Design, 2-Ply Tissue/1-Ply Poly

- Add color to the operatory and bring smiles to younger patients
- Made in the USA
- Not made with natural rubber latex

13" x 19" 500/case
(100-9712)..... 500/case



Standard Professional Towels



- Specially treated to increase the wet and dry tensile strength of towel
- Provides the perfect blend of facial softness and super-absorbency
- Made in the USA
- Not made with natural rubber latex

3-Ply Paper

13" x 19" 500/case

Specify:

White	(100-3161)	Blue	(100-0183)
-------	------------	------	------------



Exam Drapes



2-Ply, All-Virgin Tissue

- Designed to blanket the patient in lightweight comfort
- Available in an array of colors to enhance office decor

White, 36" x 48" 100/case
(101-3658)..... 100/case

White, 40" x 48" 100/case
(100-1797)..... 100/case

Blue, 40" x 48" 100/case
(100-3360)..... 100/case

Mauve, 40" x 48" 100/case
(100-6428)..... 100/case

White, 40" x 60" 100/case
(101-8521)..... 100/case



Premium Exam Drapes



3-Ply, All-Virgin Tissue

- Soft, opaque, and heavyweight
- Embossed tissue drape with dependable wet strength is ideal for short to moderate exams
- Conforms to the body and offers the ultimate in absorbency

White, 40" x 48" 100/case
(101-7084)..... 100/case



Pillowcases



Tissue/Poly/Tissue

- Provide linen-like softness for patient comfort and an inner poly barrier for extra protection
- Strong and durable

White, 21" x 30" 100/case
(104-9206)..... 100/case



Premium Solacel® Pillowcases



1-Ply Tissue/Poly

- Disposable pillowcase is super soft and strong
- By bonding supple tissue to polyethylene film with a heat-lamination process, a unique material that is soft, strong, and tear-resistant is created
- Deluxe material prevents soak-through

White, 21" x 30" 100/case
(570-3849)..... 100/case



Headrest Covers



Tissue/Poly

- Tissue outer surface provides greater comfort for your patients
- Poly lined to help protect your equipment

Small Size 500/case
10" x 10" 500/case

Specify:

White	(101-7104)	Mauve	(101-3198)
Blue	(101-4595)	Green	(102-8451)
Lavender	(102-5543)		

Regular Size (13" Open Side)

10" x 13" 500/case

Specify:

White	(101-8627)	Mauve	(101-1051)
Blue	(101-8955)	Green	(102-5542)
Lavender	(102-9374)		



Table Paper



- Quiet, absorbent barrier
 - Designed and manufactured to provide strength, protection, and value
 - White
- Smooth, 225 ft
18"..... 12 rolls/case
(900-4978)..... 12 rolls/case
- 21" x 225 ft
(900-4979)..... 12 rolls/case



Premium Table Paper Rolls



- Designed and manufactured to provide strength, protection, and value
 - White
- Crepe, Standard, 125 ft
18"..... 12/case
(100-9865)..... 12/case
- 21"..... 12/case
(100-1657)..... 12/case
- Smooth, Standard, 225 ft
14"..... 12/case
(104-4501)..... 12/case
- 18"..... 12/case
(100-9491)..... 12/case
- 21"..... 12/case
(100-0177)..... 12/case
- Smooth, Heavy Duty, 225 ft
18"..... 12/case
(104-6092)..... 12/case
- 21"..... 12/case
(104-5273)..... 12/case

Poly-Perf® Exam Table Paper



- Absorbent top tissue layer with poly back for fluid barrier
 - For exam table coverage; can also be used as scale and table liners
 - Perforated every 18" or 21"
 - 125-ft rolls
 - White
- 18"..... 9/case
(570-0728)..... 9/case
- 21"..... 9/case
(570-0727)..... 9/case



Protection Plus Disposable Underpads



- Made of waterproof, blue poly backing
 - Absorbent core of tissue layers
 - White, hypoallergenic spunbond facing sheet
 - Not made with natural rubber latex
- 17" x 24"..... 300/case
(112-5633)..... 300/case
- 23" x 24"..... 200/case
(112-5634)..... 200/case
- 23" x 36"..... 150/case
(570-1182)..... 150/case
- 30" x 30"..... 150/case
(570-1183)..... 150/case
- 30" x 36"..... 100/case
(570-1181)..... 100/case



Emesis Basins



- Plastic
 - Kidney shaped
 - 16-oz capacity
- Mauve, 8½"..... 25/box
(112-5809)..... 25/box



Emesis Bags



- Eliminates exposure to emesis
 - Minimizes spillage
 - Opening supported by plastic notched ring to provide secure grip and unobstructed access into the bag
 - Twist bag and secure notched ring after use
 - Holds up to 40 fl oz or 1000 cc/mL
 - High-density polyethylene: 1.35-mil thick
 - Measures 16.5 cm x 38.1 cm
- (570-1178)..... 24/pkg



Plastic Cups



- Embossed Drinking Cups with Rolled Lips
- Heavy, sturdy plastic: leakproof and will not crumple in hands
 - Releases easily from dispenser: easily accessible
 - Rolled lip: easier to drink
 - Embossed wall: nonslip
 - High-gloss finish and assorted colors: decorative
- 5 oz..... 1000/case
- Specify:
- | | |
|----------|------------|
| Beige | (570-3734) |
| Blue | (570-3726) |
| Mauve | (570-3732) |
| Gray | (570-3731) |
| Green | (570-3730) |
| Lavender | (570-3728) |
| Peach | (570-3735) |
| White | (570-3727) |
| Yellow | (570-3733) |



Graduated Plastic Medicine Cups



- Plastic medicine cups with easy-to-read graduations. 1 oz. capacity.
- (112-5555)..... 100/bag



Paper Cups



- 5 oz
- Pink with Pink Ribbons
(900-4211)..... 1000/case
- White with Pink Hearts
(112-5051)..... 1000/case



Cotton-Tipped Applicators

HENRY SCHEIN®

- Applicators highlighted by a soft cotton tip: absorbent and nonlinting

Non-sterile, 3"	
(100-6015).....	1000/box
Non-sterile, 6"	
(100-9175).....	1000/box
Sterile, 6", 100 Packs of 2	
(100-9249).....	200/box



Wooden Applicator/Mixing Sticks

HENRY SCHEIN®

- Plain Wood, 6"
- International peel symbols: ensure easy opening from proper end of package
- Long shelf life (more than 10 years): economical

(100-9485).....	1000/box
-----------------	----------



Tongue Depressors

HENRY SCHEIN®

- Highly polished
- Smooth
- Designed for oral use or topical application

Non-sterile	
Junior, 5½"	
(100-0758).....	500/box
Adult, 6"	
(100-2416).....	500/box
Sterile	
Adult, 6"	
(100-0238).....	100/box



Cotton Balls

HENRY SCHEIN®

- 100% pure-white cotton
- Soft and absorbent

Sterile, Medium	
(570-3773)	500/box
Non-sterile, Medium	
(570-3771)	4000/case
Non-sterile, Large	
(570-3772)	2000/case



Cotton Bulk Absorbent Rolls, USP

HENRY SCHEIN®

1-lb Bulk Rolls	
Sterile	
(570-3769).....	ea
Non-Sterile	
(570-3770).....	ea



Cotton Rolls

HENRY SCHEIN®

Starched, 100% cotton, absorbent nasal roll.

• Starched	
• 100% cotton	
• Absorbent nasal roll	
#2 Medium, Unwrapped, Non-sterile, 1½" x ¾"	
(102-5455).....	2000/box
#2 Medium, Wrapped, Non-sterile, 1½" x ¾"	
(570-3767)	2000/box
#2 Medium, Wrapped, Sterile, 1½" x ¾"	
(570-3768)	2000/box



Facial Tissues

HENRY SCHEIN®

Soft, absorbent, value-oriented, white facial tissue: a cost-effective solution for any office. Both patients and employees will notice the softness and quality. 2-ply.

- 2-ply: strong, and absorbent
- Soft and elegantly embossed

White, 9" x 8"	
(900-4214).....	100/box



Disposable Airlaid Washcloths

HENRY SCHEIN®

- Airlaid is made from synthetic staple fibers and natural cellulose pulp
- Offers absorbency, strength, and softness
- Ideal for incontinence cleanups, bathing, and other patient applications

White, 10" x 10"	
(570-2403).....	1000/case
Contains: 50 washcloths per bag, 20 bags per case.	



Patient Belongings Bags

HENRY SCHEIN®

- Convenient bags for moving and storing patient belongings
- Plastic, opaque white
- Print: Patient Belongings, Name, Room
- 20" x 20" x 4"

Bags with Handles	
(570-1179).....	250/case
Bags with Drawstrings	
(570-1180).....	250/case



Medical tapes and wraps

Drive efficiency in your clinical practice and reduce tape SKUs

A choice that's critical to care. At Solventum, formerly 3M Health Care, we've made it easy to choose the right securement for each patient and application, with four classes of securement that can work harder and smarter.



Non-adhesive

3M™ Coban™ NL Non-Latex Self-Adherent Wrap*

Non-adhesive securement for clinical applications such as blood draws, dressings, immobilization, securement for difficult to dress areas (head, fingers, toes) and support and mild compression for soft tissue injuries (i.e. strains, sprains).*



Multi-purpose

3M™ Micropore™ S Surgical Tape*

Multi-purpose securement for clinical applications such as blood draws, light-weight dressings, IV lines and tubing (secondary securement) and non-critical tubes.



Flexible

3M™ Medipore™ H Soft Cloth Surgical Tape

Flexible securement for clinical application such as dressing and added pressure, IV lines and tubing (secondary securement), when swelling or movement is anticipated, central venous catheters (secondary securement), chest tubes and surgical drain tubes.



High-adhesion

3M™ Durapore™ Surgical Tape

High-strength securement for clinical applications such as urinary catheters, nasogastric tubes, orogastric tubes and patient positioning.



Contact your Henry Schein representative or visit [Solventum.com/MedicalTapes_Wraps](https://www.solventum.com/MedicalTapes_Wraps) to learn more

*Skin performance: Designates products that deliver the securement power you need while minimizing damage to skin.

*May use as a component in a compression wrap system support only under supervision of a wound care specialist.

© Solventum 2025. All rights reserved. Solventum and the S logo are trademarks of Solventum or its affiliates. 3M and the 3M logo are trademarks of 3M. Other trademarks are the property of their respective owners.



3M™ Coban™ NL Non-Latex Self-Adherent Wrap SOLVENTUM, FORMERLY 3M HEALTH CARE

5-yd Rolls

- Comfortable: soft, breathable, lightweight, and conformable
- Self-adherent: will not stick to skin, hair, clothing, or drapes
- Residue-free: gentle on fragile/thin skin
- Slip-minimizing cohesion: ideal for active patients
- Available in sterile and nonsterile versions and in a variety of widths and 2 colors

Non-Sterile

#2081T, 1" Width, Tan (142-4831).....72/case

#2081, 1" Width, Blue (142-4830).....	72/case
#20815B, 1½" Width, Blue (142-4839).....	48/case
#2082, 2" Width, Tan (679-9575).....	36/case
#2082B, 2" Width, Blue (142-4847).....	36/case
#2083, 3" Width, Tan (395-9243).....	24/case
#2084, 4" Width, Tan (313-6816).....	18/case
#2086, 6" Width, Tan (608-8687).....	12/case
Sterile	
#2082S, 2" Width, Tan (777-0573).....	36/case
#2083S, 3" Width, Tan (102-5030).....	24/case
#2084S, 4" Width, Tan (302-8421).....	18/case
#2086S, 6" Width, Tan (777-3803).....	12/case

3M™ Medipore™ H Soft Cloth Surgical Tape SOLVENTUM, FORMERLY 3M HEALTH CARE



- Conformability: bidirectional stretch accommodates swelling, distension, and movement
- Easy to tear at perforations: no scissors necessary
- Helps reduce risk: individually packaged, single-use length rolls can help protect patients by reducing the risk of cross contamination
- Not made with natural rubber latex

Standard Rolls, 10 yd

#2861, 1" Width (887-7957).....	24/box
#2862, 2" Width (139-3011).....	12/box
#2863, 3" Width (777-3265).....	12/box
#2864, 4" Width (471-1595).....	12/box
#2866, 6" Width (328-0293).....	12/box
#2868, 8" Width (110-8807).....	6/box

3M™ Micropore™ S Surgical Tape SOLVENTUM, FORMERLY 3M HEALTH CARE

- Offers short-term and long-term reliable and pliable fixation
- Removes cleanly, without disrupting fragile skin layers or causing patients undue pain
- Can be repositioned and neatly torn by hand
- Not made with natural rubber latex



3M™ Micropore™ Surgical Tape SOLVENTUM, FORMERLY 3M HEALTH CARE

- Conformable, breathable paper tape
- Provides good initial and long-term adhesion to skin
- Provides multi-purpose securement for clinical applications
- Can be torn by hand
- Not made with natural rubber latex

Standard Rolls, 10-yd, White

#1530-0, ½" (777-5044).....	24/box
#1530-1, 1" (777-6080).....	12/box
#1530-2, 2" (777-9382).....	6/box
#1530-3, 3" (777-9909).....	4/box



1" x 5½ yd (777-0521).....	12 rolls/box
2" x 5½ yd (777-0533).....	6 rolls/box

3M™ Durapore™ Medical Tape SOLVENTUM, FORMERLY 3M HEALTH CARE



- Offers strong adhesion: good initial and long-term adhesion to dry skin
- Easy to use: can be torn lengthwise and crosswise to create a variety of sizes as needed
- Adheres to dry skin, tubes, devices, and itself
- Helps reduce risk: individually packaged single-use length rolls can help protect patients by reducing the risk of cross contamination
- Not made with natural rubber latex

Standard Rolls, 10 yd

#1538-0, ½" Width (777-6047).....	24/box
#1538-1, 1" Width (777-2892).....	12/box
#1538-2, 2" Width (777-0941).....	6/box
#1538-3, 3" Width (777-9487).....	4/box

3M™ Transpore™ Surgical Tape SOLVENTUM, FORMERLY 3M HEALTH CARE



- Easy, straight, bi-directional tear
- Easy to handle with gloves
- Good adhesion to skin and tubing
- Transparent, porous
- Water resistant
- Hypoallergenic and not made with natural rubber latex

Standard Rolls, 10 yd

#1527-1, 1" (777-7305).....	12/box
#1527-0, ½" (777-9735).....	24/box
#1527-2, 2" (777-9422).....	6/box
#1527-3, 3" (635-1724).....	4/box

3M™ Steri-Strip™ Skin Closures SOLVENTUM, FORMERLY 3M HEALTHCARE



Sterile

- Less scarring, enhanced patient comfort, and less chance of infection than with sutures or staples
- Fast application
- Reduces likelihood of skin irritation
- Use to close lacerations, surgical incisions, and following early suture/staple removal
- Provides wound support and assists in increasing tensile strength of wound

#R1541, ¼" x 3" (777-6538).....	150/box
#R1542, ¼" x 1½" (777-0843).....	300/box
#R1546, Adhesive, ¼" x 4" (777-8250).....	500/box
#R1547, Adhesive, ½" x 4" (777-1358).....	300/box
#R1548, Adhesive, 1" x 5" (777-8945).....	100/box



New modern designs with Dukal's trusted Stat Strip® Technology



> To learn more visit dukal.info/design-series



Save time and decrease infection risk by reducing potential skin contact with Dukal's easy-to-open technology. Dukal's Stat Strip® Adhesive Bandages' specifically designed wrapper makes hygienic application as easy as grip, pull, apply – even with gloves.



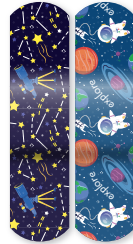
Fun Emojis
(127-5610)



Glitter®
(127-1262)



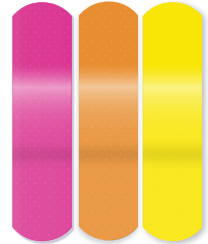
Farm Friends
(145-8472)



Planet & Stars
(127-1282)



Matey's
(147-3451)



Neon
(127-1338)



Jungle Safari, Glitter®, Camo
Assorted (4 boxes of each style)
(145-8472)



Herbie® the Dino
(127-1336)



Glitter & Stars
(127-1245)



Jungle Safari
(127-1281)



Camo
(127-1294)





Stat Strip® Bandages DUKAL

- Unique, easy-opening wrapper allows for aseptic application
- Long-lasting adhesive gently sticks to the skin
- Sterile
- Not made with natural rubber latex

Flexible Fabric Strips

¾" x 3"	
(127-1279).....	100/box
1" x 3"	
(127-1280).....	100/box
Sheer Strips	
¾" x 3"	
(127-1277).....	100/box
1" x 3"	
(127-1278).....	100/box



Soft Flexible Fabric Bandages DUKAL

- Highly absorbent, nonstick pad that protects the wound
- Prefolded wrapper tabs make it simple to open and apply
- Long-lasting adhesive gently sticks to the skin
- Sterile
- Not made with natural rubber latex

Strip, ¾" x 3"	
(127-1251).....	100/box
Strip, 1" x 3"	
(127-1254).....	100/box
Spot, ⅞"	
(127-1247).....	100/box
Oval, ⅞" x 1¼"	
(127-1252).....	100/box
Toe Shield, 1½" x 2⅞"	
(127-1253).....	100/box
Knuckle, 1½" x 3"	
(127-1246).....	100/box
Small Fingertip, 1¾" x 2"	
(127-1243).....	100/box
Large Fingertip, 1¾" x 3"	
(127-1244).....	50/box
Patch, 1½" x 2"	
(127-1248).....	100/box
Patch, 2" x 3"	
(127-1357).....	50/box
4-Wing, 2⅞" x 3"	
(127-1255).....	50/box

Pediatric Character Adhesive Bandages DUKAL

- To cover minor cuts, scrapes, and wounds
- Sterile and not made with natural rubber latex
- Long-lasting adhesive
- Nonstick wound pad
- Highly breathable

Bandages, ¾" x 3".....	100/box
Specify:	
Strawberry Shortcake	(127-1320)
Care Bears	(127-1322)
Transformers	(127-1316)
Candy Land	(127-1319)
Tonka	(127-1318)
My Little Pony	(127-1317)
Scooby Doo	(127-1257)



Super Hero Stat Strip Bandages DUKAL

Strip Bandages, ¾" x 3".....	100/box
Specify:	
Spider-Man	(127-1324)
Iron Man & Captain America	(127-1325)
Hulk & Thor	(127-1326)
Superman, Wonder Woman & Flash	(127-1311)
Batman, Green Lantern & Aquaman	(127-1312)



Fluff Bandage Roll DUKAL

• Made of washed, fluff-dried 100% cotton gauze	
• Open, crinkle weave provides quick wicking, maximum absorbency, and greater aeration	
• Finished edges reduce linting and loose threads	
• Adds bulk and loft that will conform as needed, secure dressings in place, and cushion the wound	
• Not made with natural rubber latex	
#640, Sterile, 3.4" x 3.1 yd, 6-ply	
(115-2712).....	ea
#645, Sterile, 4.5" x 4.1 yd, 6-ply	
(840-3994).....	ea
#650, Sterile, 4.5" x 4.1 yd, 8-ply	
(120-7670).....	ea
#545, Non-Sterile, 4.5" x 4.1 yd, 6-ply	
(378-0740).....	ea

Designer Adhesive Stat Strip Bandages DUKAL

- Used to cover and protect minor cuts and wounds
- Sterile and not made with natural rubber latex
- Long-lasting and highly absorbent
- Features fun designs



Non-Adherent Pads DUKAL

- Absorbent pad with nonstick outer facing
- Allows dressing to absorb, without adhering to the wound
- Ease of removal helps minimize trauma to the wound site
- Can be cut to fit any size wound without separating
- Sterile
- Not made with natural rubber latex

Without Adhesive

#123, 2" x 3"	
(120-5465).....	100/box
#134, 3" x 4"	
(120-9890).....	100/box
#138, 3" x 8"	
(261-0216).....	75/box
With Adhesive	
#124, 2" x 3"	
(681-3519).....	100/box
#125, 3" x 4"	
(681-3521).....	75/box



Caliber™ Non-Woven Island Dressings DUKAL

- Sterile, Non-Latex, 4"
- Soft, nonwoven backing with adhesive border is gentle on skin, conformable, breathable, and provides ease of movement
- Absorbent, nonadherent pad collects excess exudates and protects wound from trauma
- Not made with natural rubber latex

#4070, 2" x 3"	
(933-0082).....	50/box
#4075, 4" x 4"	
(933-0086).....	25/box
#4071, 4" x 5"	
(933-0081).....	25/box
#4072, 4" x 8"	
(933-0083).....	25/box
#4073, 4" x 10"	
(933-0084).....	25/box
#4076, 6" x 6"	
(933-0087).....	25/box

Strips, ¾" x 3".....	100/box
Specify:	
Emoji	(127-5610)
Glitter Stars & Strips	(127-1245)
Blue & Pink Camouflage	(127-1294)
Glitter	(127-1262)
Herbie the Dinosaur	(127-1336)
Farm Friends	(145-8472)
Neon	(127-1338)

Flexible Fabric Bandages

HENRY SCHEIN®

Sterile

- Soft and comfortable
- Absorbent, non-stick pad protects the wound as it heals
- Sterile and individually wrapped
- Not made with natural rubber latex

¾" x 3"	
(112-6132).....	100/box
1" x 3"	
(112-6133).....	100/box
Knuckle, 1½" x 3"	
(112-6144).....	100/box



Sheer Plastic Bandage Strips

HENRY SCHEIN®

Sterile

- Highly absorbent non-stick pad to protect the wound
- Transparent on the skin
- Sterile and individually wrapped
- Not made with natural rubber latex

¾" x 3"	
(112-6138).....	100/box
1" x 3"	
(112-6142).....	100/box
¾" Spots	
(112-6143).....	100/box
Professional Tray Pack, ¾" x 3"	
(112-6134).....	1500/case
Professional Tray Pack, 1" x 3"	
(112-6135).....	1500/case



Animal Adhesive Bandages

HENRY SCHEIN®

Sterile

- Exclusive design for Henry Schein
- Individually wrapped adhesive bandage is sterilized for maximum protection of minor cuts, punctures, and abrasions
- Nonstick, highly absorbent pad will not stick to wound
- Air vents let air in and keep moisture out
- Not made with natural rubber latex

Spots, ¾"	
(900-4506).....	100/box
¾" x 3"	
(900-4507).....	100/box



Crayon Adhesive Bandages

HENRY SCHEIN®

Sterile

- Individually wrapped adhesive bandage is sterilized for maximum protection of minor cuts, punctures, and abrasions
- Pad will not stick to wounds
- Permits wound to drain
- Not made with natural rubber latex

¾" x 3"	
(112-6995).....	100/box



Conforming Stretch Gauze Rolls

HENRY SCHEIN®

4.1-yd Rolls

- Economical knitted bandage in various widths
- Made from high-quality materials: nylon, polyester, and cotton
- Provides light compression as it cushions and protects
- Offers softness, breathability, and alleviation of irritation
- Low lint content reduces contamination to wound site
- Improved packaging is resealable, durable, easy to store, and remains clean
- Not made with natural rubber latex

Non-Sterile	
1"	
(104-2704).....	12 rolls/bag
2"	
(104-8825).....	12 rolls/bag
3"	
(104-8997).....	12 rolls/bag
4"	
(104-2728).....	12 rolls/bag
6"	
(104-9424).....	6 rolls/bag
Sterile	
2"	
(104-2739).....	12 rolls/bag
3"	
(104-9724).....	12 rolls/bag
4"	
(104-6708).....	12 rolls/bag
6"	
(104-4293).....	6 rolls/bag

Premium Hypoallergenic Cloth Surgical Tape

HENRY SCHEIN®

10-yd Rolls

- Reliable adhesion
- Highly porous
- Thin, flexible backing
- Gentle removal
- Not made with natural rubber latex
- Non-sterile

½"	
(101-3025).....	24/box
1"	
(101-2323).....	12/box
2"	
(101-5979).....	6/box



Premium Surgical Hypoallergenic Paper Tape

HENRY SCHEIN®

10-yd Rolls

- Excellent adhesion
- Pinked, nonfraying edges
- Strong woven backing
- Gentle removal
- Not made with natural rubber latex
- Non-sterile

½"	
(101-4305).....	24/box
1"	
(101-9673).....	12/box
2"	
(101-1332).....	6/box



Premium Hypoallergenic Transparent Surgical Tape

HENRY SCHEIN®

10-yd Rolls

- Excellent adhesion
- Porous, with flexible backing
- Tears easily in both directions
- Not made with natural rubber latex
- Non-sterile

½"	
(101-6655).....	24/box
1"	
(101-4645).....	12/box
2"	
(101-9226).....	6/box



Self-Adherent Bandages

HENRY SCHEIN®

Non-Sterile, 5-yd Rolls

- Self-adherent: sticks to itself, not the skin
- Comfortable porous material: pain-free removal that will not damage skin
- Provides consistent support and maintains compression

Latex	
Tan, 1"	
(570-0113).....	ea
Tan, 2"	
(900-4322).....	ea
Tan, 3"	
(900-4323).....	ea
Tan, 4"	
(900-4324).....	ea
Tan, 6"	
(900-4328).....	12 rolls/pkg
Multi, 1"	
(112-7366).....	30 rolls/pkg
Multi, 2"	
(900-4331).....	36 rolls/pkg
Multi, 3"	
(900-4332).....	24 rolls/pkg
Non-Latex	
Tan, 1"	
(112-7355).....	ea
Tan, 2"	
(112-7357).....	ea
Tan, 3"	
(112-7358).....	ea
Tan, 4"	
(112-7359).....	ea
Tan, 6"	
(112-7362).....	ea
Multicolored, 1"	
(112-7363).....	30 rolls/pkg
Multicolored, 2"	
(112-7364).....	30 rolls/pkg
Multicolored, 3"	
(112-7365).....	24 rolls/pkg

Unna's Boot

HENRY SCHEIN®

10-yd Roll

- Cotton gauze formulated with a zinc-oxide emulsion
- Used for treating venous leg ulcers, edema, and dermatitis
- Soothes inflammation and rashes
- Not made with natural rubber latex

3"	
(100-3444).....	ea
4"	
(100-3256).....	ea
3" with Calamine	
(900-7455).....	ea
4" with Calamine	
(900-7456).....	ea



Elastic Bandages with Velcro®

HENRY SCHEIN®

Non-Sterile, 4½-yd Rolls

- Elastic bandage with Velcro® brand fasteners
- Provides even compression with strength, comfort, and breathability
- Premium honeycomb-knitted material
- Not made with natural rubber latex

2"	
(900-4681).....	10/box
3"	
(900-4682).....	10/box



Elastic Bandages With Clips

HENRY SCHEIN®

Non-Sterile, 4½-yd Rolls

- High cotton content to keep patients cool and comfortable
- Durable bandages can be laundered, sterilized, and reused
- Ideal for support and compression applications, such as treatment of varicosities, sprains, strains, and torn or injured ligaments
- Not made with natural rubber latex

2"	
(900-4677).....	10 rolls/pkg
3"	
(900-4678).....	10 rolls/box
4"	
(900-4679).....	10 rolls/box
6"	
(900-4680).....	10 rolls/box

Combine ABD Pads

HENRY SCHEIN®

- Highly absorbent multilayer ABD (abdominal) dressing
- Soft, nonwoven outer facing wicks moisture into the cellulose core, which quickly absorbs and disperses fluid
- Moisture-resistant barrier prevents fluid strikethrough
- All edges are sealed to prevent linting and leakage
- Not made with natural rubber latex
- Sterile



4"	
(900-4683).....	10/box
6"	
(900-4684).....	10/box



Compare to Steri-Pad

Gauze Pads

HENRY SCHEIN®

Sterile

- Highly absorbent
- 100% woven cotton
- Can be used for general cleaning, debriding, and prepping
- Box is perforated at bottom for easier gauze removal

2" x 2"	
(570-2659).....	100/pkg
3" x 3"	
(570-2629).....	100/pkg
4" x 4"	
(570-2649).....	100/pkg



5" x 9"	
(570-1470).....	25/box
8" x 7½"	
(570-1472).....	20/box
8" x 10"	
(570-1471).....	20/box



All-Gauze Sponges

HENRY SCHEIN®

Non-Sterile

- Precision sizes and folding: consistency within functions
- Soft and pliable: nonabrasive touch
- Highly absorbent: soaks up unwanted fluid
- Can be used for general cleaning, debriding, and prepping

8 Ply, 2" x 2"	(570-2657).....	200/pkg
12 Ply, 2" x 2"	(570-2658).....	200/pkg
8 Ply, 3" x 3"	(570-2650).....	200/pkg
12 Ply, 3" x 3"	(570-2648).....	200/pkg
8 Ply, 4" x 4"	(570-2656).....	200/pkg
12 Ply, 4" x 4"	(570-2630).....	200/pkg



Premium All-Gauze Sponges

HENRY SCHEIN®

- Manufactured from 100% USP type-VII cotton gauze that is bleached and processed to established standards
- Soft and pliable
- Protects as a wound covering as it provides maximum absorbency

Non-Sterile		
8 Ply, 2" x 2"	(570-2647).....	200/pkg
12 Ply, 2" x 2"	(570-2628).....	200/pkg
12 Ply, 3" x 3"	(570-2640).....	200/pkg
8 Ply, 4" x 4"	(570-2646).....	200/pkg
12 Ply, 4" x 4"	(570-2645).....	200/pkg
Sterile		
8 Ply, 2" x 2"	(570-2642).....	100/pkg
12 Ply, 3" x 3"	(570-2631).....	80/pkg
8 Ply, 4" x 4"	(570-2644).....	50/pkg
12 Ply, 4" x 4"	(570-2637).....	50/pkg

Type VII Gauze Sponges

HENRY SCHEIN®

- Meets USP Type VII requirements
- Highly absorbent and offers exceptional clinical performance
- Not made with natural rubber latex
- Sterile, 4" x 4"

8 Ply	(570-2633).....	10/pkg
12 Ply	(570-2655).....	10/pkg
16 Ply	(570-2638).....	10/pkg
12 Ply, X-ray Detectable	(570-2632).....	10/pkg
16 Ply, X-ray Detectable	(570-2634).....	10/pkg



Premium Exodontia Sponges

HENRY SCHEIN®

Manufactured from all USP 100% cotton. Soft, absorbent, and pure white. Highest quality. 2" x 2", 8-ply.

Non-Sterile—Filled	(570-2635).....	5000/case
Sterile—Filled	(570-2652).....	200/pkg



Exodontia Sponges

HENRY SCHEIN®

100% cotton gauze sponges with maximal absorbency cotton inner liner. Superior and consistent quality. Available in 3 sizes. 8-ply.

Non-Sterile—Filled		
2" x 2"	(570-2636).....	5000/case
3" x 3"	(570-2602).....	4000/case
4" x 4"	(570-2651).....	2000/case
Sterile—Filled		
2" x 2"	(570-2653).....	200/pkg

CRITERION™ Non-Woven Sponges

HENRY SCHEIN®

Sterile 2s, 4 Ply

- High quality
- Excellently constructed
- Rayon/poly-blend that is soft and gentle to the touch
- High-quality, excellently constructed rayon/poly-blend sponge that is soft and gentle to the touch and very comfortable against skin
- Thicker and more absorbent than standard sponges
- Multiuse sponge that can be used for all applications of wound-care treatments
- Easy-to-open, peel-back packaging
- Not made with natural rubber latex

2" x 2"	(104-7897).....	50/pkg
3" x 3"	(104-4132).....	50/pkg
4" x 4"	(104-8665).....	50/pkg



CRITERION™ Non-Woven Sponges

HENRY SCHEIN®

Non-Sterile, 4 Ply

- High-quality, excellent construction, rayon/poly-blend sponge that is soft and gentle to touch and very comfortable against skin
- Thicker and more absorbent than standard sponges
- Multiuse sponge can be used for all applications of wound-care treatments
- Easy-to-open, peel-back packaging
- Not made with natural rubber latex

2" x 2"	(104-2930).....	200/pkg
3" x 3"	(104-2410).....	200/pkg
4" x 4"	(104-2411).....	200/pkg

Premium Non-Woven Sponges

HENRY SCHEIN®

Non-Sterile, 4 Ply

- General-use, non-woven rayon/polyester-blend material
- Quarter-fold design
- Less linting: minimizes lint contamination
- Soft and pliable: prevents irritation to mucosa
- Greater absorbency: reduces number of sponges required
- Closed weave
- Not made with natural rubber latex

2" x 2"	(101-9278).....	200/pkg
3" x 3"	(101-8748).....	200/pkg
4" x 4"	(101-4336).....	200/pkg



Back to School with Delta-Cast®

Back to school means sports and germs. Delta-Cast® offers Delta-Dry® & AquaCast® cast padding, allowing you to maintain proper hygiene with easy handwashing. Plus, these products keep your cast dry, even during the sweatiest sports.

Delta-Cast®

We know casting.

For more information,
contact your local Henry Schein
Medical Representative!



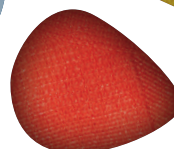
Delta-Cast®,
an Essity brand

f /BSNOrthoUSA

X @BSNOrthoUSA

BSN Medical Inc., an Essity company
5825 Carnegie Blvd., Charlotte NC 28209-4633
Fax (+1) 800 835 4325

65459 RN ©2025 Essity HMS North America Inc. D25



Instant Heat Compresses

HENRY SCHEIN®

- Squeeze to activate
- Maintains therapeutic heat for up to 20 minutes
- Recommended for muscular pain relief
- Helps improve circulation
- Conforms to body contours
- Flexible material
- Disposable: one-time-use only
- Non-sterile

6" x 8 1/4"

(499-0813)..... 24/case

Instant Cold Compresses

HENRY SCHEIN®

- Single squeeze allows for easy activation of packs
- Provides immediate relief to injured area
- Ideal for minor sprains, swelling, aches, sore joints, burns, nosebleeds, and headaches
- Flexible material conforms to body contours
- Single use
- Non-sterile
- No refrigeration needed

5" x 5 1/2"..... 50/case
(112-6147).....

5" x 7"..... 48/case
(112-6146).....

6" x 9"..... 24/case
(112-6145).....



Reusable Cold or Hot Gel Packs

HENRY SCHEIN®

Easy to use: freeze for cold therapy, microwave for hot therapy. Not made with natural rubber latex.

- Easy to use: freeze for cold therapy, microwave for hot therapy
- Different styles and sizes make application easy
- Nontoxic and environmentally friendly
- Effective hot/cold therapy is a proven pain reliever—used to relieve arthritis and joint pain, muscle strains, and stiffness
- Can be washed easily and remains odor- and bacteria-free
- Remains soft and flexible when frozen
- Contours readily to all parts of the body
- Not made with natural rubber latex
- Non-sterile

4" x 6 1/2"..... ea
(570-2140).....

5 1/4" x 10"..... 24/case
(570-2139).....



Ear Curettes

HENRY SCHEIN®

Disposable

- Color coded
- Individually wrapped
- Non-sterile
- Loop or spoon tip available

Loop, Pink, Small
(900-4669).....50/box

Loop, White, Large
(900-4670).....50/box

Spoon, Gray, Small
(900-4671).....50/box

Spoon, Peach, Large
(900-4672).....50/box



Disposable Vaginal Specula

HENRY SCHEIN®

Recommended for routine gynecological exams. Made of hard, clear, nontoxic, high strength plastic resin.

- Allows examination of vaginal mucosa at a 360° angle without rotation
- Provides wide range of adjustability (angular and elevation adjustments)
- One-handed manipulation for ease of operation
- Self-holding in various opening positions
- Decreases risk of contamination
- If needed, apply lubrication for better comfort during examination
- Made of hard, clear, nontoxic, high-strength plastic resin

Small
(102-5396).....10/pkg

Medium
(102-5397).....10/pkg

Large
(102-9422).....10/pkg



Maxima® Taylor Percussion Hammer 7"

HENRY SCHEIN®

German Stainless Steel, Solid Handle, Pediatric Size

(104-8462).....ea



Surgical Blades

HENRY SCHEIN®

- Sterile
- Individual foil packs
- Computer-controlled grinding ensures a consistently sharp edge
- Stainless steel

Stainless Steel.....100/box

Specify:

#10	(112-6199)	#20	(112-6184)
#11	(112-6190)	#21	(112-6185)
#12	(112-6177)	#22	(112-6195)
#15	(112-6178)	#23	(112-6200)
#15S	(112-7294)	#25	(112-6201)



Hartman-Noyes Alligator Forceps

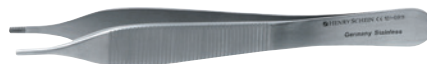
HENRY SCHEIN®

Standard Stainless Steel, Serrated Jaws

3½"
(100-7328).....ea

5½"
(100-0886).....ea

6½"
(100-6937).....ea



Maxima® Adson-Brown Dressing Forceps 4¾"

HENRY SCHEIN®

German Stainless Steel

7 x 7 Side-Grasping Teeth

(101-6911).....ea



Maxima® Spencer Stitch Scissors 3½"

HENRY SCHEIN®

German Stainless Steel

(100-6024).....ea



Maxima® Iris Scissors

HENRY SCHEIN®

German Stainless Steel

3½", Curved, Delicate Pattern

(102-3439).....ea

3½", Straight, Delicate Pattern

(102-5248).....ea



Maxima® Lister Bandage Scissors

HENRY SCHEIN®

German Stainless Steel, Extra Fine

7¼"

(104-7364).....ea

8" One Large Ring

(104-5841).....ea



Alcohol Prep Pads

HENRY SCHEIN®

Sterile

- Soft, absorbent, and non-woven pads impregnated with 70% isopropyl alcohol USP
- Primarily used as a topical antiseptic; disinfects prior to administering injections

Medium, 30 mm x 30 mm, Folded
(570-2219).....200/box

Large, 70 mm x 62.5 mm
(570-1307).....200/box



BZK Towelettes

HENRY SCHEIN®

- Premoistened antiseptic towelettes used for general cleansing for patients and staff
- Alcohol-free
- Unscented
- Cleans and cools simultaneously
- Sting-free cleansing of all minor cuts, scrapes and burns
- BZK is nontoxic and nonirritating

(112-6735).....100/box



Povidone-Iodine Swabsticks and Prep Pads

HENRY SCHEIN®

Sterile

- Topical antiseptic used for skin preparation that helps to reduce bacteria that can cause infection
- Saturated with 10% USP povidone-iodine prep solution (equivalent to 1% titratable iodine)
- Not made with natural rubber latex

Single Pack, 4"L
(570-1549).....25 pkg/box
Contains: 1 swabstick per pkg.

Triple Pack, 4"L
(570-1548).....25 pkg/box
Contains: 3 swabsticks per pkg.

Single Pouches, 1½" x 1½", Folded
(570-1543).....1000/case
Contains: 1 per pouch.



Maxima® Safety Scalpels

HENRY SCHEIN®

- Sterile
- Single use
- Retractable
- Easily extend or retract the blades while avoiding contact with the sharp blade edges
- Color coded for easy identification of blade size

Safety Scalpels.....10/box

Specify:

Size 10	(570-0243)	Size 12	(570-0244)
Size 11	(570-0245)	Size 15	(570-0246)



Disposable Scalpels

HENRY SCHEIN®

- Stainless steel
- Plastic handle with millimeter scale and durable stainless steel blade
- Strong: reduced breakage
- Sharp: clean, true, consistent cut
- Packaging: superior protection and handling
- Individually peel-backed for convenience
- Testing: consistent high quality; assured quality to international standards

Scalpels.....10/box

Specify:

#10	(112-6196)	#15	(112-6187)
#11	(112-6189)	#15S	(112-7296)
#12	(112-6194)	#20	(112-6193)

#12B
(112-6188).....10/box



Surgical Skin Markers

HENRY SCHEIN®

These surgical marking pens provide an accurate and reliable way to mark the incision site prior to surgery.

- Prep-resistant
- Nonabrasive tip
- Large ink reservoir

Non-Sterile, Fine Tip, Ruler, and Up to 9 Labels
(900-7018).....100/box

Sterile, Fine Tip, Ruler, and Up to 6 Labels
(900-7019).....50/box

Mini (WriteSite Jr.), Dark Blue
(900-7020).....100/box



Non-Fenestrated Drapes

HENRY SCHEIN®

Sterile, Polylined, Tissue/Poly/Tissue

- Heat sealed along 2 outer edges to ensure a pinhole-free plastic layer that guarantees maximum protection against bacterial strike-through from below
- Features polyethylene lining between 2 layers of absorbent-strength tissue, virtually eliminating risk of bacterial migration and strike-through
- All sterile fields are available in convenient dispenser boxes of 50 each

White, 18" x 26"
(900-4686).....50/box



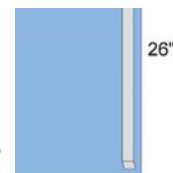
Fenestrated Drapes

HENRY SCHEIN®

Sterile, with 3" Round Fenestration
Tissue/Poly/Tissue

- Allows access to the operative site while it protects surrounding area
- 3" round fenestration option is die cut and heat sealed, leaving a smooth, even edge that prevents linting
- Not made with natural rubber latex

White, 18" x 26"
(900-4685).....50/box



Utility Drapes with Tape

HENRY SCHEIN®

Sterile

- Trilayer SMS fabric is soft, drapable, and naturally repellent to fluids
- Trilayer fabric construction provides an excellent barrier to strikethrough
- Low-lint-generating fabric reduces particulates and minimizes airborne particulate contamination
- Excellent flammability properties provide additional protection for the patient and staff when using lasers and electrocautery devices
- Not made with natural rubber latex
- Single use

15" x 26"
(570-1684).....100/case

Complete Ear Care



ClearLook® Lighted Ear Curette with Magnification



OtoClear® Ear Irrigation Tip and Systems

 HENRY SCHEIN®

For more information, contact your local Henry Schein Medical Representative or visit henryschein.com/medical


bionix®

©2025 Bionix LLC. All Rights Reserved.



Disposable Skin Stapler

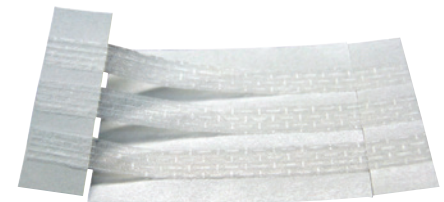
 HENRY SCHEIN®

- Enables user to work with higher efficiency and assists in avoiding cross infection effectively
- Specially designed for surgical skin suturing
- Novel structure and application security allow quick speed when sewing up during operation, modest histological reaction, and good wound matching and healing
- No pain during removal
- Scarring is minimal

Skin Stapler, 35 Wide
(570-2956).....ea

Skin Stapler, 35 Regular
(570-2957).....ea

Skin Staple Remover
(900-7011).....ea



Wound Closure Strips

 HENRY SCHEIN®

- Adhesive wound closures with an exceptionally porous, spun-bond fiber backing include bilateral nylon filaments for high tensile strength
- To be used in addition to or in place of sutures
- Each size is in a color-coded package for quick and easy size identification
- Medical-grade adhesive properties: Affords excellent adhesion, resistance to moisture, superior longevity, and is gentle to the skin
- Hypoallergenic: Designed for patient comfort and longer-term exposure
- Not made with natural rubber latex

1/8" x 3"
(900-4317).....250/box
Contains: 5 strips per envelope, 50 envelopes per box.

1/4" x 3"
(900-4315).....150/box
Contains: 3 strips per envelope, 50 envelopes per box.

1/4" x 4"
(900-4318).....500/box
Contains: 10 strips per envelope, 50 envelopes per box.

1/4" x 1 1/2"
(900-4316).....300/box
Contains: 6 strips per envelope, 50 envelopes per box.

1/2" x 4"
(900-4314).....300/box
Contains: 6 strips per envelope, 50 envelopes per box.

1" x 4"
(900-7506).....100/box
Contains: 4 strips per envelope, 25 envelopes per box.



TOPICAL SKIN ADHESIVE - OCTYL

High-Strength 2-Octyl Cyanoacrylate Formulation

Advantages

Rapid set time

Flexibility without a plasticizer

Ergonomic ampule designed for ease of handling and targeted application

Provides an effective microbial barrier and water-resistant protection

High tensile strength

Unique formulation will not solidify in ampule, allowing all 0.5mL to be used

Gravity fed applicator delivery system - no need to squeeze ampule



Glass-free reservoir containing 0.5mL of Topical Skin Adhesive

Rigid sleeve helps prevent bending of applicator during adhesive application

Angled applicator tip changes color in the presence of adhesive

Perforation in the middle, allowing ease of adhesive flow

Additional Information

Polymerization starts when adhesive comes in contact with tissue or fluid.

All 0.5mL of adhesive can be used on the patient, as adhesive will not solidify in the ampule.

Topical Skin Adhesive will remain attached to the skin surface until natural cellular regeneration occurs (approx. 5-7 days). If needed, any standard adhesive remover product may be used to release the adhesive from the skin. Peel off the film, do not pull the skin apart.

Henry Schein® Topical Skin Adhesive - Octyl

0.5mL ampules, 12/box.....(570-3554)

Order today at [HENRYSCHEIN.COM/MEDICAL](https://www.henryschein.com/medical)



EXCLUSIVE BRANDS
& PRODUCTS



QUALITY YOU
CAN RELY ON



SMART
SAVINGS



TOPICAL SKIN ADHESIVE - BUTYL

Strong Bonding and Reliable Protection

- Sterile, single-use plastic ampules of liquid skin adhesive consisting of n-butyl-2-cyanoacrylate
- Antibacterial barrier protects the wound
- Applicator tips provide precise, controlled application
- Will not clog or dry when opened
- Blue liquid color option available to enable easy control over quantity applied



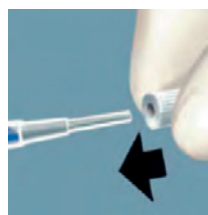
EASY-TO-USE APPLICATION



Open the package and take out the tip.



Open the ampule by twisting off the ribbed tip.



Apply the tip to opened ampule.



Apply the glue in a thin layer to the wound edges and hold in position for 60 seconds.

Henry Schein® Topical Skin Adhesive

Flexible Ampule with Tip, Blue 0.5 mL, Ea.
Flexible Ampule with Tip, Blue 0.5 mL, 10/box

(570-0351)
(112-7158)

Ampule without Tip, Clear 0.5 mL, 10/box
Ampule without Tip, Blue 0.5 mL, 10/box

(112-6106)
(112-6111)

Order today at HENRYSCHEIN.COM/MEDICAL



Soft as velvet and light as a feather.



Tested for use with **56** chemo drugs*



- XS** (261-0357)
- S** (261-0358)
- M** (261-0359)
- L** (261-0360)
- XL** (261-0361)

sempermed® velvet™
nitrile exam gloves

violet blue | non-sterile | powder-free
300 gloves/box (250XL), 10 boxes/case



*Meets USP 800 requirements
for PPE compliance to chemotherapy

For more info visit www.henryschein.com/medical or
contact your local Henry Schein Medical Representative

Protecting Patients Since 1989

Nitrile Powder-Free Flamingo



- | Size | Item # |
|---------|------------|
| X-SMALL | (136-4752) |
| SMALL | (136-4753) |
| MEDIUM | (136-4754) |
| LARGE | (136-4755) |
| X-LARGE | (136-4757) |

Nitrile Powder-Free Elephant



- | Size | Item # |
|---------|------------|
| X-SMALL | (131-4062) |
| SMALL | (131-4063) |
| MEDIUM | (131-4064) |
| LARGE | (131-4065) |
| X-LARGE | (131-4066) |

For more information, contact your local
Henry Schein Medical Representative
or visit henryschein.com/medical



EXAM GLOVES



NEW!

CRITERION™ Nitrile N300

CRITERION

Nitrile Powder-Free Exam, Non-Sterile
Ultrathin formulation for excellent tactile sensitivity and dexterity. Chlorinated for reduced friction and easy donning. Textured fingers promote sure handling of instruments and materials. Chemotherapy and fentanyl tested to the ASTM D6978 standard. Ecofriendly packaging—with 300 gloves in a box—reduces waste and saves space. Beaded cuff. 2.0-mil thickness at the palm. Black.

Gloves.....300/box

Specify:
X-Small (570-3482) Large (570-3485)
Small (570-3483) X-Large* (570-3486)
Medium (570-3484)

*250/box



CRITERION™ Nitrile N100

CRITERION

Nitrile Powder-Free Exam
Durable nitrile construction for reliable protection and tactility. Chlorinated for reduced friction and easy donning. Textured fingers provide an enhanced grip. Chemotherapy tested to the ASTM D6978 standard. Beaded cuff. 3.15-mil thickness at the palm. Blue.

Gloves.....100/box

Specify:
X-small (111-8533) Large (111-8537)
Small (111-8535) X-large* (111-8539)
Medium (111-8536)

*90/box



CRITERION™ Nitrile Low Derma

CRITERION

Nitrile Powder-Free Exam, Non-Sterile
Made from a soft, durable nitrile formulation without the use of chemical accelerators or sulfur, preventing Type-IV allergic reactions. Reduces the potential for dermatitis for glove wearers, yet still provides softness and comfort and maintains superior protection. Chlorinated for reduced friction and easy donning. Textured fingers promote sure handling of instruments and materials. Chemotherapy tested to the ASTM D6978 standard. Beaded cuff. 2.0-mil thickness at the palm. Slate Blue.

Gloves.....200/box

Specify:
X-Small (570-0630) Large (570-0633)
Small (570-0631) X-Large* (570-0634)
Medium (570-0632)

*180/box



CRITERION™ Nitrile Colloidal Oatmeal

CRITERION

Powder-Free Nitrile Exam, Non-Sterile
Made from 100% all-natural colloidal oatmeal, clinically proven to act as a skin protectant and repair damaged skin. Provides continuous protection from prolonged glove use and hand washing. Chlorinated for reduced friction and easy donning. Textured fingers promote sure handling of instruments and materials. Gluten-free. Beaded cuff. 2.0-mil thickness at the palm. White.

- An all-natural colloidal oatmeal USP coating has been added to our barrier protective glove
- Provides continuous transfer and delivery of unique skin protection during typical glove use

Gloves.....200/box

Specify:
X-Small (112-6220) Large (112-6223)
Small (112-6221) X-Large (112-6224)
Medium (112-6222)



CRITERION™ Latex Polymer Coated

CRITERION

Finished with a smooth interior polymer coating for fast and easy donning. Comfortable fit and feel for a superior range of motion. Textured fingers for an enhanced grip. Beaded cuff. 3.15-mil thickness at the palm. White.

Gloves.....100/box

Specify:
X-Small (570-3412) Large (570-3415)
Small (570-3413) X-Large* (570-3416)
Medium (570-3414)

*90/box



CRITERION® Aloe + Vitamin E

CRITERION

Powder-Free Latex Exam, Non-Sterile
Enhanced inner coating of aloe and vitamin E to soothe and moisturize. Fast and easy donning. Comfortable fit and feel provide superior range of motion. Textured finish for an enhanced grip. Beaded cuff. 3.15-mil thickness at the palm. White.

Gloves.....100/box

Specify:
X-Small (570-3448) Large (570-3451)
Small (570-3449) X-Large* (570-3416)
Medium (570-3450)

*90/box

Care for Your Patients and the Planet

For a Healthier **TOMORROW**

By integrating environmental sustainability into health care practices worldwide, we can support practitioners to enhance both patient care and the environment, fostering a health care system that positively contributes to a healthy planet.

www.henryschein.com/practicegreen





BeeSure® NeoGrene™ ECOBEE

Chloroprene Powder-Free Exam
Third-generation chloroprene technology, which provides latex-like strength and comfort. Excellent tactile sensitivity with fingertip texture. 3.2-mil thick. Green. Compact packaging reduces material waste.

Gloves.....200/box

Specify:
X-Small (353-0100)
Small (353-0101)
Medium (353-0102)
Large (353-0103)
X-Large (353-0104)



BeeSure® Naturals Glacier ECOBEE

Nitrile Powder-Free Exam
Soft and stretchy with better tactile sensitivity. Textured fingertips for enhanced grip. Recycled packaging and 60% less packaging waste. 2.6-mil thick. Glacier Blue.

Gloves.....300/box

Specify:
X-Small (353-0060)
Small (353-0061)
Medium (353-0062)
Large (353-0063)



BeeSure® SuperSlim™ ECOBEE

Nitrile Powder-Free Exam
Textured fingertips for enhanced grip. Great tactile sensitivity. 60% less packaging waste. Midnight Blue.

Gloves.....300/box

Specify:
X-Small (353-0052)
Small (353-0053)
Medium (353-0054)
Large (353-0055)



BeeSure® Naturals Face Masks, Level 3 ECOBEE

Designed with unique, natural elements.

- More than 60% earth-friendly cellulose components
- Quad-Fold® design offers 15% more breathing volume
- 100% non-latex and fiberglass-free filter layers
- Recycled packaging

Earloop Masks.....50/box

Specify:
Canyon Red (142-4176) Cloud White (142-4178)
Glacier Blue (142-4177) Forest Green (142-4180)



Precision Eco™ Bio Face Masks, Level 3 PADM MEDICAL USA

Made from biopolymers that are produced from renewable crop resources.

- Hypoallergenic
- Absorbent, non-woven inner layer and hydrophobic outer layer
- Non-latex and graphene-free
- Bendable nose-clip wire for custom fit

Earloop Masks.....50/box

Specify:
White (145-3980) Black (145-3981)



BeeSure® Radiant Face Masks, Level 3 ECOBEE

Designed to maintain a noncollapsible space for maximum breathing room. Forms an ergonomic seal around nose, chin, and cheeks to minimize air leakage. Made from recycled packaging.

- Fluid resistant
- Not made with natural rubber latex
- Lint-free and dye-free

Earloop Masks.....40/box

Specify:
Aqua (143-3260) Orange (143-3262)
Lime (143-3261) Violet (143-3263)

FACE MASKS



Floral Series Face Masks ASTM Level 3 50/box

Quad-Fold design offers 15% more breathing volume, and RoundEdge corners for added comfort.



Hibiscus Pink (142-4158)



Plumeria Blue (142-4159)



Orchid Lavender (142-4163)



Daisy Yellow (142-4164)



Fern Green (142-4165)

Naturals Series Face Masks ASTM Level 3 50/box

with more than 60% earth-friendly cellulose components and Quad-Fold design offers 15% more breathing volume



Glacier Blue (142-4176)



Canyon Red (142-4177)



Cloud White (142-4178)



Forest Green (142-4180)



[beesureusa](#) [beesureusa](#)

For more information, contact your local Henry Schein Medical Representative or visit henryschein.com/medical



Cranberry® 360 Face Masks—Level 3 CRANBERRY

Same excellent features as the Cranberry® 360 Face Masks—Level 2, but with a higher level of protection.

- Fluid resistant
- Nonwoven, fog-free design
- Not made with natural rubber latex

Masks.....40/box

Specify:
Small—Silver (127-2212)
Medium—Blue (127-2213)
Regular—Black (142-8421)



Cosmo™ Face Masks, Level 3 CRANBERRY

Dual-colored outer layer for dynamic visual. Feature an exclusive Quad-Fold® design for 15% more breathing volume.

- Fluid resistant
- Adjustable nose and chin strap for better fit and protection
- Not made with natural rubber latex

Earloop Masks.....50/box

Specify:
Comet Blue (137-2812) Stellar Purple (137-2814)
Galactic Green (137-2813)



CARBON® Face Masks, Level 3 CRANBERRY

All-black design.

- Fluid resistant
- Redesigned mask folds minimize outer fluid collection
- Quad-fold design provides 15% more breathing room
- Nose and chin adjustment strap for better fit and protection
- Not made with natural rubber latex

(127-2208).....50/box

FACE MASKS



CRITERION™ Earloop Masks Level 3

CRITERION

- Light and comfortable for extended wear
- Filter media is surrounded by soft, nonirritating inner and outer facing
- Full-width flexible nosepiece provides fit and security
- Not made with natural rubber latex

Masks.....50/box

Specify:

Black	(570-3273)	Teal	(570-2042)
Blue	(570-2044)	White	(570-2043)
Lavender	(570-2047)	Yellow	(570-2046)
Pink	(570-2045)		

Blue—Made in the USA

(570-2448)..... 50/box



CRITERION™ Earloop Masks, Level 2

CRITERION

- Made from spunbond outer/inner layers with filter media
- Flat earloops for greater comfort
- Meets ASTM standards as a low-barrier (fluid resistant) face mask
- Not made with natural rubber latex
- Made in the USA
- ASTM Level 2

Masks.....50/box

Specify:

Blue	(104-7799)	Pink	(104-9200)
Lavender	(104-8071)		



CRITERION™ Earloop Masks, Level 1

CRITERION

- Light, comfortable masks for extended wear when necessary
- Ear loops are made from special stretch yarn: no irritating rubber or plastic touches the skin
- 3-ply, glass-free filter media
- Soft, nonirritating inner and outer facing
- Full-width flexible nosepiece provides fit and security
- Manufactured to exceed all current ASTM F2100-04 standards
- Not made with natural rubber latex
- ASTM Level 1

Masks.....50/box

Specify:

Black	(570-3272)	Teal	(570-3280)
Blue	(104-3809)	White	(104-6611)
Lavender	(104-8600)	Yellow	(104-2849)
Pink	(104-3730)		

Blue—Made in the USA

(570-2443)..... 50/box



CRITERION™ Sensitive Skin Earloop Masks

CRITERION

Non-Latex, Blue

Fluid-resistant, spunbond outer layer/inner white layer made from extremely soft hypoallergenic cellulose. Will not lint, tear, or shred. Meets ASTM standards as a low (primary) fluid-resistant barrier @ 80-mm Hg; PFE 99.75% @ 1 µm; BFE 99.3% @ 3.1 µm; Delta P-3.4. Made in the USA.

- Fluid resistant
- Earloops and a flexible nosepiece for a secure fit
- Hypoallergenic and free of chemicals, inks, and dyes
- Made in the USA
- Not made with natural rubber latex

Ultrasoft.....50/box

Specify:

Blue	(104-8072)	Pink	(104-8073)
------	------------	------	------------

Masks.....50/box

Specify:

Blue	(570-3276)	Pink	(570-3277)
------	------------	------	------------



CRITERION™ Earloop Masks with Eye Shields Level 3

CRITERION

4-ply procedural face masks that offer ASTM Level 3 protection. Each mask features an eye shield treated on both sides with antifog material, offering maximum barrier protection.

- Fluid resistant
- Pleated design for enhanced breathability
- Earloops and a flexible nosepiece for a secure fit
- Not made with natural rubber latex

Teal

(570-3116)..... 25/box



CRITERION™ Extra Breathing Room Earloop Masks

CRITERION

With a contoured design that enhances airflow and breathability, these 3-ply procedural face masks offer ASTM Level 1 and Level 3 protection. Each mask features a soft, nonirritating inner and outer layer.

- Fluid resistant
- Adjustable, full-width nosepiece
- Fiberglass-free
- Not made with natural rubber latex
- ASTM Level 1

Level 1.....50/box

Specify:

Blue	(570-0722)	Lavender	(570-0724)
White	(570-0723)		

Level 3..... 50/box

Specify:

Blue	(570-3289)	Lavender	(570-3291)
White	(570-3290)		

FACE MASKS



CRITERION™ Pediatric Procedure Earloop Face Masks

CRITERION

Intended to be worn by children in health-care settings with appropriate adult supervision.

- Designed specifically to fit small faces, mask ensures optimal respiratory protection for children aged 4–12
- Made of soft, non-woven material, providing enhanced breathability and comfort
- Smooth, stretchy, ultrasonically sealed earloops prevent irritation and allow easy removal without self-contamination
- Adjustable nosepiece provides a custom fit
- Not made with natural rubber latex

Blue
(570-2268).....50/box



CRITERION™ Anti-Fog Earloop Masks, Level 3

CRITERION

Lightweight and comfortable, these 3-ply procedural face masks offer ASTM Level 3 protection. Each mask features an integrated antifog strip to prevent eyewear from fogging and a soft, nonirritating inner and outer layer.

- Fluid resistant
- Pleated design for enhanced breathability
- Earloops and a flexible nosepiece for a secure fit
- Not made with natural rubber latex

Masks.....50/box

Specify:

Blue	(570-3281)	White	(570-3283)
Lavender	(570-3282)	Pink	(570-3284)



Children's Earloop Face Masks PRECEPT® MEDICAL PRODUCTS, INC.

Pleated face masks made specifically for children. High filtration for improved protection.

- Smiley-face design
- Child-size fit (ages 3–12)
- Not made with natural rubber latex

Earloop Masks
(840-9672).....75/box



Procedural Masks CROSSTEX

Inner and outer splash-resistant layers with white inner layer for sensitive skin. PFE exceeds 99% at 0.1 µm. Meets ASTM face-mask standard for fluid resistancy. Ear loops are sonically attached to outside of mask to eliminate skin irritation. Enclosed aluminum nosepiece; high breathability. Not made with natural rubber latex.

- Fluid resistant
- Extra-long aluminum nosepiece
- Not made with natural rubber latex
- Made in the USA
- ASTM Level 2

Office Pack.....50/box

Specify:

Blue	(107-6443)	Yellow	(107-4286)
Pink	(107-6070)	Lavender	(110-8821)

Blue
(933-0171).....100/box



Isofluid™ Face Masks Level 1

CROSSTEX

Unique fluid-resistant outer layer. White facial tissue inner layer eliminates facial irritation. Filtration efficiency exceeds 99.5% at 1 µm. Sof-Bond™ construction for ultimate comfort and positive fit. Secure-Loop™ design prevents broken ear loops. Easy breathability. Not made with natural rubber latex.

- Fluid resistant
- Extra-long aluminum nosepiece
- Not made with natural rubber latex
- Made in the USA
- ASTM Level 1

Office Pack.....50/box

Specify:

Blue	(107-8257)	Pink	(107-2100)
Green	(107-2183)	Lavender	(107-9865)
Teal	(107-6179)		

Blue
(933-0170).....100/box

Jewel Collection.....50/box

Specify:

Sapphire	(108-3520)	Turquoise	(108-3036)
----------	------------	-----------	------------



Ultra™ Sensitive Face Masks with SecureFit™ Technology Level 3

CROSSTEX

Same excellent features as the Ultra™ Sensitive Face Mask, but offers a tighter custom fit for enhanced protection. Its full-length aluminum nosepiece and 3" aluminum chin piece help create a seal that significantly reduces gapping at the bottom and sides of mask. Made in the USA. Not made with natural latex.

- Made in the USA
- ASTM Level 3

White

(774-0131).....50/box



CaviWipes™ METREX

CaviWipes are durable, non-woven, nonabrasive towelettes that offer quick, easy-to-use, time-saving convenience. They are recommended for use on nonporous surfaces and fixtures.

- Kills TB in 3 minutes and MRSA, HIV-1, HBV and HCV in 2 minutes
- Effective against odor-causing organisms on hard, nonporous surfaces
- All-in-one cleaner and disinfectant

#13-1100, Large, 6" x 6¾"	160/cont
(640-2805)	
#13-1150, X-Large, 10" x 12"	65/cont
(640-8482)	
#13-1224, Flat Pack, 7" x 9"	45/pkg
(640-2566)	
#13-1155, Individually Wrapped, X-large, 10" x 12"	50/box
(640-2854)	
#13-1175, Wall Bracket	ea
(640-2856)	



CaviWipes™ HP METREX

- Alcohol-free, hydrogen-peroxide wipes that do not require PPE and are safe for use for both clinicians and patients
- Offer a 1-minute universal contact time against over 50 pathogens
- Qualified for EPA emerging viral pathogen claims for enveloped viruses (e.g., influenza A and B, HIV-1, and HBV) as well as small/large nonenveloped viruses (e.g., norovirus and rhinovirus types 1A and 37)

6" x 6¾"	160/cont
(640-0122)	
9" x 12"	65/cont
(142-5192)	



CaviWipes™ Bleach METREX

CaviWipes Bleach with patent-pending Enhanced Chlorine Technology™ (ECT) are multipurpose cleaning wipes that are gentle on surfaces, yet tough on pathogens. They also meet the CDC recommended 1:10 bleach dilution.

- Kills *C. diff* in 3 minutes—no other surface wipe is faster
- No personal protection equipment is required. (Special instructions for cleaning prior to disinfection against *Clostridium difficile* spores, HIV-1, HBV, and HCV.)
- Compatible with most medical device equipment (See medical device equipment manual for compatibility information.)
- One-step cleaner and disinfectant
- Low odor

#13-9100, 6" x 10½"	90/canister
(129-6430)	



CaviWipes1™ METREX

This multipurpose disinfectant/decontaminant wipe can be used on hard, nonporous surfaces. CaviWipes1 contains durable, nonwoven, nonabrasive wipes presaturated with CaviCide1™.

- One-minute contact time for virucidal, bactericidal (including TB), and fungicidal activity
- One-step cleaning and disinfecting*
- Compatible with common hard, nonporous surfaces found in the clinical environment

#13-5100, Canisters Large—6" x 6¾"	160/cont
(640-0024)	
#13-5150, X-Large—9" x 12"	65/cont
(640-0023)	
#13-5224, FlatPack	45/pkg
(640-0026)	
#13-5155, Individually Wrapped X-Large—9" x 12"	50/box
(640-0027)	

*When no gross debris is present.



CaviCide™ METREX

A convenient, ready-to-use, intermediate-level surface disinfectant that is effective against TB, HBV, HCV, viruses (hydrophilic and lipophilic), bacteria (including MRSA and VRE), and fungi.

- Effective against TB in 3 minutes, and HIV-1, HCV, HBV, and MRSA in 2 minutes
- Disinfectant, cleaner, and decontaminant all in one
- May be used on most medical device materials
- For use on hard, nonporous surfaces

#13-1024, 24-fl-oz Trigger-Spray Bottle	ea
(640-2261)	
#13-1000, 1-gal Bottle	ea
(640-0012)	
#13-1025, 5-gal Set	ea
(640-5006)	
Contains: 2—2½-gal bottles.	



CaviWipes™ 2.0 Disinfectant Wipes METREX

- Effective against over 40 pathogens
- 2-minute efficacy against norovirus, influenza A and B, SARS-CoV-2, TB, HIV-1, and more
- Qualified for the EPA's Emerging Viral Pathogen claim for all virus types
- Compatible with hard, nonporous surfaces

Large, 6" x 6¾"	160/cont
(140-3081)	
X-Large: 9" x 12"	65/cont
(140-3082)	



Clorox Healthcare® VersaSure® Cleaner Disinfectant Wipes CLOROX HEALTHCARE

- Ready-to-use, one-step cleaner
- disinfectant wipes
- Fast, non-bleach disinfectant
- No harsh chemical odors, fumes, or added fragrances
- Noncorrosive
- EPA-registered to kill more than 40 microorganisms, including 11 antibiotic-resistant organisms
- 30–120-second hard-surface disinfecting time for most bacteria and viruses

#31757, 6¾" x 8"	
(131-8854).....	85/canister
#31758, 6" x 5", 150/pkg	
(131-8855).....	6 pkg/case
#31759, Bucket, 110 wipes/pkg	
(131-8859).....	2 pkg/case
#31761, Bucket Refill, Pouch, 110 wipes/pkg	
(131-8860).....	2 pkg/case



Clorox Healthcare® Bleach Germicidal Wipes CLOROX HEALTHCARE

Destroys tough bacteria, mold, and mildew at their source, eliminating the potential for transmission of various microorganisms, germs, viruses, and allergens. Specifically formulated for cleaning hard, nonporous surfaces. These products offer expanded kill claims, and a shorter contact kill time (30 seconds on most bacteria, 1 minute on most viruses). Complies with OSHA's Bloodborne Pathogen Standard and AOAC testing requirements for hospital disinfectant.

#35309, 8¾" x 9", 70-Count Canister	
(250-9245).....	ea



Clorox® Commercial Solutions Clorox® Disinfecting Spray CLOROX HEALTHCARE

Fresh-scented spray that cleans, sanitizes, and disinfects nonporous surfaces throughout the dental office, including metal surfaces. Simply spray and allow the surface to air dry.

- Bleach-free, phenol-free, broad-spectrum disinfectant and deodorizer that meets AOAC Germicidal Spray Product Test efficacy standards for hospital disinfectants
- Kills 99.9% of bacteria and viruses including HIV, TB, hepatitis A, poliovirus, E. coli, influenza, and more
- Fresh scent

#38504, 19-oz Can	
(250-1203).....	ea



Clorox Healthcare® Hydrogen Peroxide Cleaner Disinfectant Wipes CLOROX HEALTHCARE

Proprietary and patented activated hydrogen peroxide technology.

- Proprietary and patented activated hydrogen peroxide technology
- 30–60 second contact time for most bacteria and viruses (see product label for specific kill claims)
- Kill claims for more than 40 microorganisms, including 13 antibiotic-resistant organisms (including MRSA and VRE), norovirus, rhinovirus, rotavirus, RSV, influenza A, and E. coli
- Kills bacteria on soft surfaces in 30 seconds
- No harsh chemical odor or fumes
- Noncorrosive, nonflammable

#30825, Small	
(437-0023).....	155/canister
#30824, Large	
(437-0022).....	95/canister



Clorox® Healthcare® Bleach Germicidal Cleaner CLOROX HEALTHCARE

Fast-Acting Cleaner/Disinfectant

- EPA-registered to kill *C. difficile* spores in 5 minutes
- Kills norovirus in 1 minute
- Formulated with 1:10 bleach solution strength that is recommended by CDC guidelines for effective disinfecting
- Meets OSHA bloodborne pathogen standards
- Cleans and disinfects in 1 step

#68978, 1-gal Refill Bottle	
(437-0035).....	ea
#68970, 32-oz Trigger-Spray Bottle	
(120-8623).....	ea



Clorox Healthcare® Citrace® Hospital Disinfectant & Deodorizer CLOROX HEALTHCARE

- Kills 99.9% of the bacteria that cause odor in just 30 seconds, eliminating odor instantly
- The light, natural citrus scent disappears rapidly but Citrace keeps working on clinical surfaces to kill dangerous pathogens, including influenza, rhinovirus (common cold), and dangerous MDROs (multidrug-resistant organisms) in 5 minutes or less

#49100, 14-oz Aerosol Spray Can	
(120-5256).....	ea



MAXIWIPE™ Alcohol-Free Germicidal Disposable Wipes

HENRY SCHEIN®

Formulated with care: Alcohol- and fragrance-free wipes for staff and patients with respiratory sensitivities. Efficient, one-step cleaner and disinfectant. Effective bactericidal, tuberculocidal, and virucidal, including SARS-CoV-2 (the virus that causes COVID-19), in 3 minutes. EPA Registration No. 9480-9, now qualified for List Q*. Intermediate level.

Large, 6" x 6¾" 160/cont
(570-3056)
X-Large, 7½" x 15" 75/cont
(570-3057)

*MAXIWIPE™ Alcohol-Free has demonstrated effectiveness against emerging viral pathogens, such as the monkeypox virus, on hard, nonporous surfaces.



MAXIWIPE™ Germicidal Cloths

HENRY SCHEIN®

- Cleans and disinfects common hard, nonporous surfaces
- Bactericidal, tuberculocidal, and virucidal
- Effective against 13 microorganisms including TB, HBV, MRSA, VRE, and RSV
- Contains 55% alcohol
- Meets CDC and OSHA regulations

Large 160/canister
(106-6794)
X-Large 75/canister
(570-3361)



MaxiSpray® Plus

HENRY SCHEIN®

Surface Disinfectant Cleaner

- Hospital-level, general-purpose disinfectant/cleaner proven to kill TB in 5 minutes, and HBV, HIV, and HCV in 3 minutes
- EPA-registered as a broad-spectrum disinfectant for both surface and immersion use
- Bactericidal, virucidal, tuberculocidal, and fungicidal

24-oz Trigger-Spray Bottle ea
(101-4114)
1-Gal Refill ea
(101-0285)



Antibacterial Liquid Hand Soap

HENRY SCHEIN®

- Provides a luxurious feel, leaving hands smooth and soft
- Pleasant Cucumber and Aloe fragrance
- Contains 0.6% chloroxylenol (PCMX) for antimicrobial action, and aloe vera to add moisture with each use

8-oz Pump Bottle ea
(900-4439)
16-oz Pump Bottle ea
(900-4438)
1-gal Refill Bottle ea
(900-4440)



Hand Sanitizer

HENRY SCHEIN®

Waterless, alcohol-based gel hand sanitizer. Ideal for use where soap and water are not readily available. Rinse-free: no water required. Kills 99.9% of most common disease-causing germs spread by hands. Soothing emollients and a pleasant, fresh, clean scent. Leaves hands soft and clean. 66.5% ethyl alcohol. Made in the USA.

8-oz Pump Bottle ea
(900-4443)
16-oz Pump Bottle ea
(900-4442)



Quick Wipes

HENRY SCHEIN®

9" x 5½" premoistened, ready-to-use hand towelettes. Wipes are durable and easy to dispense. Cleans and refreshes without soap and water. Hands will self-dry in seconds, leaving skin soft and smooth.

- Soft, strong towelettes: allow easy and gentle cleansing of hands and face
- Effective and gentle formulation that contains aloe: formulated for fast drying and gentleness
- Convenient packaging: towelettes easily dispensed through orifice; each towelette is saturated with cleaning liquid

Pop-Up Container, 9" x 5½" 150/cont
(104-4176)



#147-2089 #137-7898 #143-1057

WE SET THE SUSTAINABILITY STANDARD

The PURELL® ES10 Dispensing System uses formulas that are Cradle to Cradle Certified® Gold. This certification validates that we choose safe ingredients for people and the planet.

Call your Henry Schein Representative today!




©2025 GOJO Industries, Inc. All rights reserved. | 37762 (4/2025)



PROVON® Clear & Mild Foam Handwash
GOJO
Gentle foam handwash designed for frequent use. Helps maintain skin health, even after repeated washing. Formulated with a blend of moisturizers that maintain the skin's natural moisture barrier. Clean, fresh scent dissipates quickly.

Refill
(325-0192)..... 24 oz.



Purell® Advanced Aloe Instant Hand Sanitizer
GOJO
Enhanced with 4 different skin-conditioning agents that help maintain skin health and improve overall skin feel. America's No. 1 instant hand sanitizer kills 99.99% of the most common germs on hands, not just in the lab. Works in as little as 15 seconds without water or towels.

#3639-12, 12-fl-oz Pump Bottle
(590-0066)..... ea



Purell® Instant Hand Sanitizer with Moisturizers
GOJO
Refreshing sanitizer that kills 99.9% of germs on the hands without water or towels. Leaves hands feeling soft. Contains 70% ethyl alcohol.

#9651-24, 4-fl-oz Bottle
(313-1626).....ea
Pump Bottle
(137-7898)..... 12 oz.
Pump Bottle, 20 oz.
(590-0015)..... 12/case



Adrenalin® Injection PAR STERILE PRODUCTS

1 mg/mL, 1-mL SDV
(248-0883).....ea
1 mg/mL, 1-mL SDV
(890-0257).....25/pkg
1 mg/mL, 30-mL MDV
(129-4847).....ea



Albuterol Inhalation Solution RITEDOSE PHARMACEUTICALS

0.083%, 3 mL
(148-1446).....30/pkg



Compare to Proventil® Albuterol Inhalation Solution NEPHRON

0.042%, 3 mL
(116-4177).....30/box



Albuterol Sulfate HFA Aerosol SANDOZ INC.

90 mcg, 6.7 gm
(141-8443).....ea



Compare to Augmentin® Amoxicillin/Clavulanate Tablets AUROBINDO PHARMA

875 mg/125 mg
(131-0208).....100/btl



Aplisol® Injectables PAR STERILE PRODUCTS

Tuberculin PPD Stabilized Solution, 5 TU/0.1 mL
1-mL Vial
(110-5199).....10/pkg
5-mL Vial
(110-5099).....50/pkg



AUVI-Q® Epinephrine Auto-Injectors KALEO

0.1 mg
(148-1961).....2/pkg
0.15 mg
(148-1959).....2/pkg
0.3 mg
(148-1960).....2/pkg



Bicillin® L-A Injectable* Prefilled Syringes PFIZER

Penicillin G Benzathine IM Suspension
Adult, 21 ga x 1½"
1,200,000 U/mL, 2 mL
(321-7445).....10/pkg
Adult, 18 ga x 1½"
2,400,000 U/mL, 4 mL
(321-1663).....10/pkg

*Tubex injector is not required.



Compare to Pulmicort® Budesonide Inhalation Suspension TEVA

0.5 mg/2 mL
(143-5369).....ea



Compare to Rocephin® Ceftriaxone Sodium Injectable APOTEX

250-mg SDV
(131-4702).....10/box
500-mg SDV
(135-9645).....10/box
1-gram Vial
(133-6436).....10/box
2-gram Vial
(135-7800).....10/box



Celestone® Soluspan® Injectable Suspension ORGANON

6 mg/mL, 5-mL MDV
(140-7856).....ea



Compare to Keflex®

Cephalixin Capsules AUROBINDO PHARMA

500 mg
(147-0781)..... 500/btl



Cyanocobalamin Injectable (B-12) LIFESTAR PHARMA LLC

1000 mcg/mL, 1-mL SDV
(148-6761)..... 25/pkg

Cyanocobalamin Injectable B-12 SOMERSET PHARMA LLC

1000 mcg/mL, 30-mL MDV
(143-9613)..... 10/box



Cyanocobalamin Injectable B-12 HIKMA

1000 mcg/mL, 10-mL MDV
(148-5659)..... 10/pkg



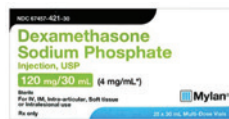
Cyanocobalamin Injectable (B-12) VITRUVIAS THERAPEUTICS

1000 mcg/mL, 1-mL SDV
(141-8752)..... 10/box



Depo-Medrol® Injectables PFIZER

Methylprednisolone Acetate
20 mg/mL, 5-mL MDV
(908-3069).....ea
40 mg/mL, 1-mL SDV
(908-5362).....ea
40 mg/mL, 1-mL SDV
(231-1203)..... 25/box
40 mg/mL, 5-mL MDV
(908-9783)..... ea
40 mg/mL, 5-mL MDV
(908-8955)..... 25/box
40 mg/mL, 10-mL MDV
(908-1188).....ea
40 mg/mL, 10-mL MDV
(908-1177)..... 25/box
80 mg/mL, 1-mL SDV
(908-7936)..... ea
80 mg/mL, 1-mL SDV
(908-8623)..... 25/box
80 mg/mL, 5-mL MDV
(908-3787)..... ea
80 mg/mL, 5-mL MDV
(908-7913)..... 25/box



Dexamethasone Sodium Injection MYLAN INSTITUTIONAL

4 mg/mL, 30-mL MDV
(148-0841).....ea



Dexamethasone Sodium Phosphate Injection MYLAN INSTITUTIONAL

4 mg/mL, 30-mL MDV
(148-0829)..... 25/box



Dexamethasone Sodium Phosphate Injection FRESenius KABI

4 mg/mL, 5-mL MDV
(375-1975)..... 25/pkg



Compare to Decadron®

Dexamethasone Sodium Phosphate Injectable FRESenius KABI

Preservative-free
10 mg/mL, 1-mL SDV
(406-7616)..... 25/pkg



Dexamethasone Sodium Phosphate EUGIA

10 mg/mL, 10-mL MDV
(139-6050)..... 10/box



Compare to Decadron®

Dexamethasone Sodium Phosphate Injectable MYLAN INSTITUTIONAL

10 mg/mL, 10-mL MDV
(248-0875)..... ea
(122-2910)..... 10/pkg



Compare to Decadron®

Dexamethasone Sodium Phosphate Injectable HIKMA

10 mg/mL, 1-mL SDV
(138-6758)..... 25/pkg



Medroxyprogesterone XIROMED

150 mg/mL, 1-mL SDV
(148-6306).....ea
(148-6307)..... 25/pkg



Compare to Decadron®
Dexamethasone Tablets
ROXANE LABORATORIES

0.5 mg (277-0039).....	100/btl
0.75 mg (277-0525).....	100/btl
1 mg (277-0065).....	100/btl
1.5 mg (277-0049).....	100/btl
4 mg (277-0050).....	100/btl



Epinephrine Auto Injectors
AMNEAL PHARMACEUTICALS
Authorized generic of Adrenalick®.

Junior 0.15 mg (127-6483).....	2/pkg
Adult 0.3 mg (127-9954).....	2/pkg

Epinephrine Auto-Injector
TEVA

Adult, 0.3 mg (143-6151).....	2/pkg
----------------------------------	-------



Compare to Adrenalin®
Epinephrine Injectable Ampules
BPI LABS

1:1000, 1 mL (248-0899).....	ea
(128-9991).....	10/box



Ethyl Chloride Spray
GEBAUER

Fine-Stream Spray, 3.9 oz (138-9019).....	ea
Fine Spray—3.9 oz. (138-9016).....	4/pkg
Medium-Stream Spray, 3.9 oz (138-5777).....	ea
Medium-Stream Spray, 3.9 oz (138-5778).....	4/pkg



Ethyl Chloride Spray
GEBAUER

Mist Spray Can, 3.9 oz (138-6406).....	ea
(138-6360).....	4/pkg
(138-6330).....	12/case



Kenalog®-40 Injectables
BRISTOL MYERS SQUIBB

Triamcinolone Acetonide	
40 mg/mL 1-mL SDV (196-8300).....	ea
5-mL MDV (196-1737).....	ea
10-mL MDV (196-9429).....	ea



Kenalog®-80 Injectables
BRISTOL MYERS SQUIBB

Triamcinolone Acetate 80 mg/mL	
1-mL Vial (136-4157).....	ea
5-mL Vial (136-4158).....	ea



Compare to Toradol®
Ketorolac Injection
FOSUN PHARMA

15 mg/mL, 1-mL SDV (146-1679).....	25/box
30 mg/mL, 1-mL SDV (258-0457).....	ea
30 mg/mL, 1-mL SDV (143-6324).....	25/box
30 mg/mL, 2-mL SDV (258-0456).....	ea
30 mg/mL, 2-mL SDV (143-6293).....	25/box



Compare to Lincocin®
Lincomycin HCl Injectable
X-GEN PHARMACEUTICALS

300 mg/mL	
2 mL (127-0994).....	10/pkg
10 mL (127-3415).....	10/pkg



Levalbuterol Inhalation Solution
TEVA

0.31 mg (138-1259).....	30/box
0.63 mg (138-1150).....	30/box
1.25 mg (133-9591).....	30/box

Medroxyprogesterone XIROMED

150 mg/mL, 1-mL SDV
(148-6306).....ea
(148-6307).....25/pkg



Compare to Tamiflu® Oseltamivir Phosphate Capsules CAMBER PHARMACEUTICALS

75 mg
(142-4014).....10/pkg



Pain Ease® Mist Spray GEBAUER

Topical Anesthetic
Skin Refrigerant
3.9-oz Mist Spray
(791-0634).....ea
1-oz Medium-Stream Spray
(132-9467).....ea
3.9-oz Medium-Stream Spray
(761-0029).....ea
Can be used in facilities that restrict use of flammable components.



Compare to Depo-Provera® Medroxyprogesterone Injectable EUGIA

150 mg/mL Prefilled Syringe
(146-4156).....ea



Compare to Depo-Medrol® Methylprednisolone Acetate Injection PAR STERILE PRODUCTS

40 mg/mL, 10-mL MDV
(143-8564).....ea



Compare to Depo-Medrol® Methylprednisolone Acetate Injection AMNEAL

1-mL SDV
40 mg/mL
(140-9021).....ea
(140-9026).....25/box
80 mg/mL
(140-9031).....ea
(140-9048).....25/box
5-mL MDV
80 mg/mL
(148-6462).....ea

Silver Nitrate Applicators, 6" Wood HENRY SCHEIN®

- Applications: skin or mucous membrane cauterization; removing warts and granulated tissue
- 75% silver nitrate; 25% potassium nitrate
- 50 mg active ingredients/applicator
- Silver nitrate tips are soluble in all secretions
- Control strength by dipping in sterile, distilled water
- Rigid wooden applicator for precision placement
- Convenient tube vial

(112-6994).....100/vial



Solu-Cortef® Injectables PFIZER

Preservative-Free
100 mg, 2-mL SDV
(908-0011).....ea
(908-0012).....25/pkg
250 mg, 2-mL SDV
(908-0013).....ea
500 mg, 4-mL SDV
(908-0014).....ea
1000 mg, 8-mL SDV
(908-0015).....ea
100-mg, 2-mL SDV
(835-5169).....ea



Solu-Medrol® Injectables PFIZER

Act-O-Vial®, Preservative-Free
40 mg, 1-mL Vial
(382-0014).....25/pkg
125 mg, 2-mL Vial
(382-0015).....25/pkg
500 mg, 4-mL Vial
(382-0016).....ea
1 g, 8-mL Vial
(382-0017).....ea



Tubersol® SANOFI

Tuberculin PPD (Mantoux), 5 TU/0.1 mL
1-mL Vial
(546-9191).....10/pkg



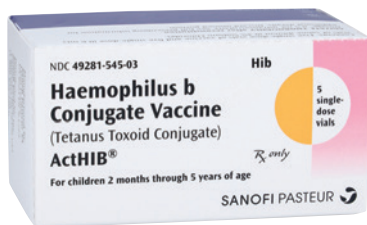
Compare to Kenalog®-40 Triamcinolone Acetonide Injection AMNEAL

40 mg/mL
1-mL SDV
(142-2167).....ea
(142-3667).....25/box
5-mL MDV
(142-3668).....ea
10-mL MDV
(142-2227).....ea



VENTOLIN HFA Inhaler GSK

90 mcg
8 gm
(131-5535).....ea
18 gm
(228-3204).....ea



ActHIB®
SANOFI
 Haemophilus b Ped Conjugate (Tetanus Toxoid Conjugate) Vaccine, Thimerosal-Free
 0.5-mL SDV with Diluent
 (546-0024)..... 5/pkg
 CPT® Code: 90648†



BOOSTRIX®
GSK
 Tetanus Toxoid, Reduced Diphtheria, and Acellular Pertussis Adsorbed Vaccine
 0.5-mL Tip-Lok® Prefilled Syringe
 (254-0031)..... 10/pkg
 CPT® Code: 90715†



Gardasil® 9
MERCK
 Human Papillomavirus 9-Valent Vaccine, Recombinant
 0.5-mL Prefilled Luer-lock Syringe
 (558-0044)..... 10/pkg
 CPT® Code: 90651†
 Gardasil® 9 is a registered trademark of Merck & Co., Inc.



Adacel®
SANOFI
 Tetanus Toxoid, Reduced Diphtheria Toxoid, and Acellular Pertussis Vaccine Adsorbed
 0.5-mL SDV
 (546-7789)..... 10/pkg
 0.5-mL Prefilled Syringe Without Needle
 Not made with natural rubber latex.
 (132-5841)..... 5/pkg
 CPT® Code: 90715†



DAPTACEL®
SANOFI
 Diphtheria and Tetanus Toxoids and Acellular Pertussis (DTaP) Vaccine (Adsorbed), Thimerosal-Free
 0.5-mL SDV, Pediatric
 (546-1136)..... 10/pkg
 CPT® Code: 90700†



HAVRIX® –Pediatric/Adolescent
GSK
 Hepatitis A (Inactivated) Vaccine, Thimerosal-Free, 720 ELU/0.5 mL
 0.5-mL Prefilled Syringe
 (254-0023)..... 10/pkg
 CPT® Code: 90633†



BEXSERO®
GSK
 Meningococcal Group B Vaccine
 0.5-mL Prefilled Syringe
 (127-2151)..... 10/pkg
 CPT® Code: 90620†



ENGRIX-B® –Pediatric/Adolescent
GSK
 Hepatitis B Recombinant Vaccine
 10 µg, 0.5-mL Syringe
 (254-0026)..... 10/pkg
 CPT® Code: 90744†



HIBERIX®
GSK
 Haemophilus b Conjugate Vaccine (Tetanus Toxoid Conjugate)
 Prefilled Syringe, 0.5 mL
 (146-1811)..... 10/pkg
 CPT® Code: 90648†



INFANRIX®

GSK

Diphtheria and Tetanus Toxoids and Acellular Pertussis (DTaP) Vaccine (Adsorbed), Thimerosal-Free

0.5-mL Prefilled Syringe
(124-0010).....10/pkg

CPT® Code: 90700†



PEDIARIX®

GSK

Diphtheria and Tetanus Toxoids and Acellular Pertussis (DTaP) (Adsorbed), Hepatitis B (Recombinant), and Inactivated Poliovirus Vaccine (Combined)

0.5-mL Tip-Lok® Prefilled Syringe
(254-0028).....10/pkg

CPT® Code: 90723†



Penbraya™

PFIZER

Meningococcal (Groups A, B, C, W, and Y) Vaccine.

0.5-mL Prefilled Syringe
(146-0233).....ea
(146-0247).....5/pkg

CPT® Code: 90623†



IPOL®

SANOFI

Poliovirus (Salk) (Inactivated) Vaccine

5-mL, 10-Dose Vial
(546-7189).....ea

CPT® Code: 90713†



M-M-R® II

MERCK

Measles, Mumps, and Rubella Vaccine

0.5-mL SDV with Diluent
(558-0110).....10/pkg

CPT® Code: 90707†

M-M-R® II is a registered trademark of Merck & Co., Inc.

Pentacel®

SANOFI

Diphtheria and Tetanus Toxoids and Acellular Pertussis Adsorbed, Inactivated Poliovirus and Haemophilus b Conjugate (Tetanus Toxoid Conjugate) Vaccine

0.5-mL SDV, Thimerosal-Free
(140-7444).....5/pkg

CPT® Code: 90698†



KINRIX™

GSK

Diphtheria and Tetanus Toxoids and Acellular Pertussis Adsorbed and Inactivated Poliovirus Vaccine

0.5-mL Prefilled TipLok Syringe
(254-0025).....10/pkg

CPT Code: 90696†



PedvaxHIB®

MERCK

Haemophilus b Conjugate (Meningococcal Protein Conjugate) Liquid Vaccine

0.5-mL SDV
(558-3778).....10/pkg

CPT® Code: 90647†

PedvaxHIB® is a registered trademark of Merck & Co., Inc.



Pneumovax® 23

MERCK

Pneumococcal Vaccine (Polyvalent)

0.5-mL Prefilled Syringe
(122-2087).....10/pkg

CPT® Code: 90732†

Pneumovax® 23 is a registered trademark of Merck & Co., Inc.



PRIORIX GSK

Measles, Mumps, and Rubella Vaccine, Live
0.5-mL SDV
(142-3773).....10/box
CPT® Code: 90707[†]



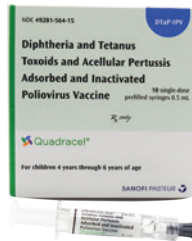
PREVNAR 20® PFIZER

Pneumococcal 20-Valent Conjugate Vaccine
0.5-mL Prefilled Syringe
(140-8153).....ea
(140-8152).....10/box
CPT® Code: 90677[†]



ProQuad® MERCK

Measles, Mumps, Rubella, and Varicella Virus
Vaccine Live
0.5-mL SDV
(558-0053).....10/pkg
CPT® Code 90701[†]
ProQuad® is a registered trademark of Merck & Co., Inc.



Quadracel™ SANOFI

Diphtheria and Tetanus Toxoids and Acellular
Pertussis Adsorbed and Inactivated Poliovirus
Vaccine
0.5-mL SDV
(141-7656).....10/pkg
0.5-mL Prefilled Syringe
(141-7655).....10/pkg
CPT® Code: 90696[†]



RECOMBIVAX HB, Pediatric/Adolescent® MERCK

Hepatitis B Vaccine, Thimerosal-Free
0.5-mL Prefilled Luer-Lock Syringe without
Safety Needle
(122-2084).....10/pkg
CPT® Code: 90744[†]
RECOMBIVAX HB® is a registered trademark of Merck & Co., Inc.



ROTARIX® GSK

Rotavirus Vaccine, Live, Oral
1.5-mL Pediatric Prefilled Syringe
(143-4023).....10/pkg
CPT® Code: 90681[†]



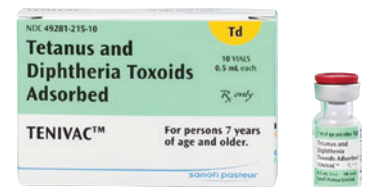
RotaTaq® MERCK

Rotavirus Vaccine (Live), Oral, Pentavalent
2-mL Single-Dose Tube
(558-8763).....10/pkg
(558-0009).....25/pkg
CPT® Code: 90680[†]
RotaTaq® is a registered trademark of Merck & Co., Inc.



ROTARIX® GSK

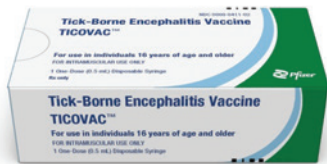
Rotavirus Vaccine (Live), Oral
1.5-mL Pediatric Prefilled Syringe
(143-4023).....10/pkg
CPT® Code: 90681[†]



TENIVAC® SANOFI

Tetanus and Diphtheria Toxoids Adsorbed
0.5-mL SDV
(546-0016).....10/pkg
0.5-mL Prefilled Syringe
(546-0017).....10/pkg
CPT® Code: 90714[†]

VACCINES



TicoVac® PFIZER

Tick-borne Encephalitis Virus Adsorbed

0.25-mL Prefilled Syringe

(142-3281).....ea

CPT® Code: 90626



Trumenba® PFIZER

Meningococcal Group B Vaccine

0.5-mL Prefilled Syringe

(248-0649).....5/pkg

(248-0648).....10/pkg

CPT® Code: 90621*



VAQTA®-Pediatric/Adolescent MERCK

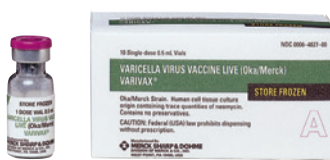
Hepatitis A (Inactivated) Vaccine, Thimerosal-Free, 25 U

0.5-mL Prefilled Luer-lock Syringe without Safety Needle

(122-2080).....10/pkg

CPT® Code: 90633*

VAQTA® is a registered trademark of Merck & Co., Inc.



VARIVAX® MERCK

Varicella (Chicken Pox) Virus (Live) Vaccine, Thimerosal-Free, Lyophilized

0.5-mL SDV

(558-1592).....10/box

CPT® Code: 90716*

VARIVAX® is a registered trademark of Merck & Co., Inc.



Vaxelis™ SANOFI

Diphtheria and Tetanus Toxoids and Acellular Pertussis, Inactivated Poliovirus, Haemophilus b Conjugate and Hepatitis B Vaccine

0.5-mL SDV

(140-3160).....10/pkg

0.5-mL Prefilled Syringe

(140-3161).....10/pkg

CPT® Code: 90697*



Vaxneuvance™ MERCK

Pneumococcal 15-Valent Conjugate Vaccine

0.5-mL Prefilled Syringe

(141-1002).....10/box

CPT® Code: 90671*

Vaxneuvance™ is a trademark of Merck & Co., Inc.



Spray with Confidence

Gebauer's PainEase®

The INSTANT Topical Anesthetic

Pain Ease - MIST Spray 3.9oz Aerosol Can 791-0634

Pain Ease - MEDIUM Stream Spray 3.9oz Aerosol Can 761-0029

Pain Ease - MEDIUM Stream Spray 30 mL Single Patient 132-9467



For more information, contact your local Henry Schein Medical Representative or visit henryschein.com/medical.

Cryo Professional Portable Cryosurgical System

NEW from Gebauer

from the makers of Gebauer's Ethyl Chloride®

Cryo Professional 5mm Specialty Kit - (2) 80mL Cryogen Canisters & (50) 5mm Applicators (RX) 148-3379

Cryo Professional 2mm Specialty Kit - (2) 80mL Cryogen Canisters & (60) 2mm Applicators (RX) 148-3282

Cryo Professional Universal Kit - (2) 80mL Cryogen Canisters & (30) 2mm + (30) 5mm Applicators (RX) 148-3378



Cryo Professional
Instructional Video



Medique® Products

The Brands That WorkSM



Ibuprofen Tablets 8390254 125 x 2's/box
Compare active ingredient to Advil®
 Ibuprofen 200 mg

Diotame Chewable Tablets 1515172 50 x 2's/box
Compare active ingredient to
Pepto Bismol® Chewable Tablets 1511593 250 x 2's/box
 Bismuth Subsalicylate 262 mg

Medi-Lyte Electrolyte Tablets 7188473 50 x 2's/box
 Calcium Carbonate 10.8 mg 1169684 250 x 2's/box
 Potassium Chloride 40 mg
 Magnesium Oxide 12 mg

Medikoff® Drops 1515867 75/box
Compare active ingredient to Halls® 1511036 600/jar
 Menthol 7.6 mg 1514400 600/box

Loradamed 1512834 50 x 1's/box
Compare active ingredient to Claritin®
 Loratadine 10 mg

Eye Wash 1514399 4 oz bottle
 Sterile Solution

thera
tears.
EXTRA®



**DRY EYE RELIEF
INSPIRED BY NATURE**



- TheraTears® EXTRA® Dry Eye Therapy is enhanced with trehalose, a disaccharide found in plants with moisture retention properties*
- The formula also contains 5 vital electrolytes found in natural tears



Item# (141-2098)

*TheraTears® EXTRA® contains synthetic trehalose



A&D Ointment, Unit Dose



Helps treat chafed skin associated with diaper rash and helps seal out wetness. Temporarily protects minor cuts, scrapes, and burns, and temporarily protects and relieves chapped and cracked skin and lips. Also helps prevent and protect from the drying effects of wind and cold weather.

5-gm Packets
(570-3126).....144/box
Contains: 144–5-gm packets per box.



Compare to Tylenol® Extra Strength APAP Extra Strength Tablets, Unit Dose



- Manufactured and packaged in the USA
- Highest quality-control standards under the FDA
- Packaged in 250 sealed-in pouches of 2 tablets each
- Convenient dispenser box
- Color-coded inner and outer packaging

500 mg
(900-4690).....500/box
Contains: 250 pouches of 2 tablets.



Compare to Tylenol® APAP Regular Strength Tablets, Unit Dose



Nonaspirin pain reliever and fever reducer.

- Original pain reliever
- 2 tablets per pouch
- Made in the USA

325 mg
(900-4689).....500/box
Contains: 250 pouches of 2 tablets.



Bacitracin Zinc Ointment, USP



Helps prevent infection in minor cuts and burns.
Active ingredient: bacitracin zinc, 500 units.

1-oz Tube
(570-3129).....ea
0.9-gm Unit-Dose Packs
(570-3125).....144/box



Compare to Active Ingredient in Cortaid® Hydrocortisone Cream 1%, USP



Itch relief for minor skin irritations, inflammation, and rashes. Active ingredient: hydrocortisone, USP, 10 mg.

1-oz Tube
(570-3124).....ea



Hydrogen Peroxide Solution, USP 3%



8-oz Bottle
(112-7012).....ea
16-oz Bottle
(112-7069).....ea
1-gal Bottle
(112-7070).....ea



Compare to Advil® or Motrin® Ibuprofen Tablets, Unit Dose



Powerful relief from pain and inflammation.

200 mg
(570-0177).....500/box
Contains: 250 pouches of 2 tablets.



Isopropyl Alcohol ♦



70% Isopropyl

16-oz Bottle
(112-7067).....ea
32-oz Bottle
(112-7011).....ea

♦ Hazardous material



Triple Antibiotic Ointment, USP



1-oz Tube
(570-3130).....ea
0.9-gm Unit-Dose Packets
(570-3128).....144/box



BENADRYL® Itch Stopping Cream and Spray
KENVUE

Original Strength Cream, 1-oz Tube
(395-0195).....ea
Extra Strength Topical Spray, 2-oz Pump
(699-4023).....ea



Children's Dimetapp® Cold & Allergy Elixir
FOUNDATION CONSUMER BRANDS

Provides relief of nasal congestion, sneezing, runny nose, and itchy, watery eyes.
4-oz Bottle
(141-5594).....ea
Active ingredients: brompheniramine, 1 mg/5 mL; and phenylephrine, 2.5 mg/5 mL.



Debrox® Earwax Removal Kit
PRESTIGE CONSUMER HEALTHCARE

Provides a safe, nonirritating method of removing earwax through the power of microfoam action.
Active ingredient: carbomide peroxide 6.5%.
Kit
(131-5909).....ea
Contains: soft rubber bulb ear syringe & ½-oz bottle of Debrox.
½-oz Bottle Refill
(135-5624).....ea



Little Remedies Cough Syrup
PRESTIGE CONSUMER HEALTHCARE

Honey, 4-oz Bottle
(133-6107).....ea



Little Remedies® Saline Spray & Drops
PRESTIGE CONSUMER HEALTHCARE

1-oz Bottle
(133-6108).....ea



Medi-First® Honey Lemon Cough Drops
MEDIQUE

Menthol/eucalyptus vapor-action cough drops that clear nasal passages and provide temporary relief of minor throat irritation and cough due to colds or inhaled irritants. Individually wrapped.
(136-3464).....125/box



Motrin® Children's Suspension
KENVUE

Berry, 4-oz Bottle
(395-1811).....ea
Dye-Free, Berry, 4-oz Bottle
(395-0186).....ea
Grape, 4-oz Bottle
(125-4313).....ea



Pedia-Lax® Enema for Children
PRESTIGE CONSUMER HEALTHCARE

Gives children the same fast-acting relief as a regular Fleet® enema in an easy, child-size dose.
2-¼ fl oz
(248-0570).....ea



Robitussin® Cough+Chest Congestion DM, Non-Drowsy
HALEON

8-oz Bottle
(132-5718).....ea



Tylenol® Children's Suspension
KENVUE

4-oz Bottle, Grape
(395-0165).....ea

Gentle skincare for baby



Aquaphor® Baby Healing Ointment

- Skin Protectant
- One essential solution for baby's many skincare needs.

Aquaphor® Baby Wash & Shampoo

- Gently cleanses baby skin and hair without drying.

Aquaphor® Baby Diaper Rash Cream

- 15% Zinc Oxide Skin Protectant
- Helps treat and prevent diaper rash

Beiersdorf Description	Size	Format	UPC	HSI Item Code
Aquaphor Baby Healing Ointment	7 oz.	Tube	0-72140-01946-4	124-7620
Aquaphor Baby Wash & Shampoo	16.9 fl. oz.	Pump Bottle	0-72140-02109-2	128-5313
Aquaphor Baby 3 in 1 Diaper Rash Cream	3.5 oz.	Tube in Carton	0-72140-00250-3	138-1290

Aquaphor®



There's before, and then there's **Aquaphor®**

© 2025 Beiersdorf, Inc.

Castile® Soap Towelettes PDI

- Ideal for midstream clean-catch urine specimen procedures
- Gentle cleansing agent, pH balanced
- Contains 2% coconut oil-based soap solution

2" x 2¼"..... 100/box
(610-0148)



DawnMist® Shampoo and Body Bath DUKAL

- Full-body cleansing in one simple step
- Gentle, pH-balanced formula
- Fresh apricot scent

#MS3367, 4-oz Bottle with Dispensing Cap (950-5966).....ea

#MS08, 8-oz Bottle with Dispensing Cap (124-3720).....48/case



Nix® Lice Killing Spray

PRESTIGE CONSUMER HEALTHCARE

5-oz Bottle (131-8954).....ea



Ear Wash System

HENRY SCHEIN®

A safe and effective option for removing earwax (cerumen).

- Flexible hose and rigid tube options include the bottle of ear wash fluid, trigger mechanism, and 3 tips
- Accessories, including a basin, additional tips, and splash shields for the rigid tube unit, are sold separately*
- Basin is ergonomically molded to fit under the ear
- Simply fill the bottle with warm water, secure the trigger mechanism onto the bottle, twist a disposable tip into the end of the nozzle, and press the trigger to pump the water through the nozzle into the ear
- User should place the basin under the ear to catch the water being flushed out

Ear Wash Kit with Flexible Hose and 3 Tips (570-1884).....ea

Ear Wash Kit with Rigid Tube and 3 Tips (570-1885).....ea

Ear Wash Tips (570-1883).....20/bag

Plastic Ear Wash Basin (570-1903).....ea

Ear Wash Splash Shields for Rigid Tube (570-1917).....10/bag

*There is no option for Ear Wash Splash Shields for the Flexible Hose unit.



Nix Ultra® Lice Treatment

PRESTIGE CONSUMER HEALTHCARE

- Kills lice and their eggs
- Kills super lice
- Fast and effective
- Pesticide-free and non-toxic
- Easy application
- Tough on lice; gentle on skin

Lice Shampoo (135-5184).....4 oz/box

Lice Treatment Liquid (135-5618).....3.4 oz/box



Wings™ Baby Diapers CARDINAL HEALTH

- Refastenable hook-and-loop stretch tabs for easy inspection and adjustment
- Stretchable side panels provide enhanced fit, allowing baby to move freely and comfortably
- Soft, cloth-like cover is gentle to the touch and kind to baby's skin
- Comfort leak guards gently gather around baby's leg for soft leakage barrier
- Super-absorbent core quickly pulls moisture away from baby's skin

Size 1 (147-7738).....40/pkg





Fluoride, simplified

Introducing a more comfortable fluoride experience for your patients.

3M™ Clinpro™ Clear Fluoride Treatment comes in three great flavors and glides smoothly onto teeth.

- New water-based formula
- Improved smell, taste, and mouthfeel
- Minimum contact time of just 15 minutes
- Effective fluoride uptake with lower dosage



0.50 mL L-Pop	50 packs	100 packs
Flavorless	(777-2548)	(777-2551)
Mint	(777-2545)	(777-2549)
Watermelon	(777-2546)	(777-2550)

Ask your Henry Schein Sales Consultant for complete ordering information.
HenrySchein.com/Solventum

© Solventum 2025. Solventum, the S logo, Clinpro and other trademarks are trademarks of Solventum or its affiliates. 3M and the 3M logo are trademarks of 3M. All other trademarks are property of their respective owners.

3M oral care is now part of Solventum



Oral-B® CrossAction® All-in-One Toothbrush ORAL-B

Clinically proven to reduce gingivitis after just 4 weeks of use while remaining gentle on enamel and gingiva. Perfectly angled CrossAction™ bristles penetrate between teeth to remove up to 99% of plaque biofilm in hard-to-reach areas, based on a single-use brushing study. Multisection Power Tip® bristles clean hard-to-reach areas. Outer extra-soft gingival stimulators massage gums. Textured tongue cleaner removes odor-causing bacteria from the tongue. Available in assorted colors.

(110-9522).....12/box



Clinpro™ 5000 1.1% Sodium Fluoride Dentifrice with Tri-Calcium Phosphate SOLVENTUM, FORMERLY 3M HEALTH CARE

5000-ppm 1.1% sodium-fluoride treatment uniquely formulated to rebuild enamel surfaces damaged by erosion. Safe, effective, and pleasant-flavored prescription toothpaste. Provides almost 5 times the strength of OTC brands. Contains fluoride, calcium, and phosphate. Remineralizes white-spot lesions, provides caries protection, and cleans teeth.

4 oz. Tube.....Ea.

Specify:

Spearmint (737-0029) Bubble Gum (737-0030)

Vanilla Mint (737-6095)



Peridex 0.12% Chlorhexidine Gluconate Rinse SOLVENTUM, FORMERLY 3M HEALTH CARE

4-oz Bottle (737-0005).....ea

16-oz Bottle (737-0003).....ea

64-oz Bottle (737-0004).....ea



Safety Blood-Collection Needles

HENRY SCHEIN®

Designed with a needle, safety protector caps, and a safety-lock mechanism to support overall safety and infection control. It features a professionally designed needle tip for an accurate angle and moderate length suitable for venous blood collection.

- Sharp needle for fast puncture
- Needle tube with large inner diameter for better blood flow and ease of blood collection
- Needle holder designed to avoid accidental exposure to blood samples
- Sterile
- Single use
- Not made with natural rubber latex

Needles, 22 ga x 1¼", Black
(570-2068)..... 100/box

Needles, 21 ga x 1¼", Green
(570-2067)..... 100/box

Blood-Collection Holders
(570-3492)..... 100/bag



BD Vacutainer® Plus Plastic Blood-Collection Tubes

BD

Sterile, Prelabeled

- Offer a safer method of blood collection
- Reduce risk of tube breakage and specimen spillage
- Safe, simple disposal in accordance with EPA guidelines

#367841, EDTA, K2EDTA, 2 mL, 13 mm x 75 mm
(987-0188)..... 100/box

#367862, EDTA, K2EDTA, 4 mL,
13 mm x 75 mm
(293-9187)..... 1000/case

#367856, EDTA Tube/K2EDTA, Lavender Hemogard™ Top, 3 mL, Paper Label, 13 mm x 75 mm
(127-4412)..... 100/box

#367861, EDTA Tube/K2EDTA, Lavender Hemogard™ Top, 4 mL, Paper Label, 13 mm x 75 mm
(987-7504)..... 100/box

#367899, K2EDTA, Pink Top, 6 mL, 13 mm x 100 mm
(840-3450)..... 100/box

#367874, Sodium Heparin, 10 mL,
16 mm x 100 mm
(987-3980)..... 100/box

#367871, 4-mL Plastic Plasma Tube. Additive: Sodium Heparin^N (Spray Coated), Green BD Hemogard™ Closure, Paper Label, 13 mm x 75 mm
(840-3449)..... 100/box

#366480, 10-mL Glass Plasma Tube. Additive: Sodium Heparin^N (Freeze-dried), Green Conventional Closure, Paper Label. 16 mm x 100 mm
(987-7651)..... 100/box

#367886, Lithium Heparin, Paper Label, Green Hemogard Closure, 6 mL, 13 mm x 100 mm
(306-0478)..... 100/box

#367884, Lithium Heparin, Green Top, Paper Label, Hemogard Closure, 4 mL, 13 mm x 75 mm
(293-2535)..... 100/box

#367925, Potassium Oxalate/Sodium Fluoride, Gray Top, Paper Label, Hemogard Closure, 6 mL, 13 mm x 100 mm
(293-2935)..... 100/box

#367587, Sodium Fluoride, Paper Label, Light Grey Hemogard Closure, 2 mL, 13 mm x 75 mm
(761-2174)..... 100/box



BD Vacutainer® Glass Tubes

BD

Sterile and Prelabeled

#366430, 10 mL, Red Stopper, Plain
(987-4651)..... 100/box



Phlebotomy Tray

HENRY SCHEIN®

- Large carrying capacity
- Includes racks (sharps and alcohol dispenser not included)
- Handy pull-out drawer

#48700-HSI, 9" x 6" x 14"
(112-6916)..... ea



Pressure-Activated Safety Lancets

HENRY SCHEIN®

- Application: Glucose and many other *in vitro* tests
- User safety: Needle is shielded before and after use
- Convenience: Preloaded, pressure-activated design
- Comfort: Ultrasharp and beveled needle or blade
- Efficacy: Various depths to ensure accurate sample

Safety Lancets..... 100/box

Specify:
28 ga x 1.8" (900-7991) 21 ga x 2.8" (900-7982)
21 ga x 1.8" (900-7992) 18 ga x 1.8" (900-7993)
21 ga x 2.2" (900-7980)



Tourniquet

DUKAL

Non-Latex, Rolled & Perforated

- Used for constricting or compression
- Not made with natural rubber latex
- Hypoallergenic
- Superior strength
- Convenient packaging designed for kit assembly and resale
- Feels like latex
- Rolled and perforated packaged

#4407, Blue
(146-1905)..... ea

Flu season is coming: Are you ready?



Don't wait until the flu is at your doorstep. Prepare your practice now by pre-ordering your flu vaccine and the high-quality BD syringes and safety injection needles you need to deliver each vaccination consistently and reliably.

Safety with each vaccination

When you choose BD SafetyGlide™ Needles to deliver your flu vaccines, you're also choosing to help keep your clinicians safe from accidental needlestick injuries. Plus, BD SafetyGlide™ Needles feature Activation-Assist™ Technology, making safe injections easier and more efficient.



Scan to
learn more



BD, Franklin Lakes, NJ, 07417, U.S.

bd.com

BD, the BD Logo, Activation-Assist and SafetyGlide are trademarks of Becton, Dickinson and Company or its affiliates.
© 2024 BD. All rights reserved. BD-119655 (04/24)



Safety & Conventional Hypodermic Needles

From a Name You Can Trust.



Features & Benefits:

- 3 single-handed safety activation methods: hard-surface, thumb, or finger
- Double-locking mechanism with an audible "click"
- Needle hub-compatible with all standard Luer lock and Luer slip-tip syringes
- ISO color coded—easy and quick identification of the needle gauge
- Bevel-up needle—allows for low-angle injections

ITEM#	DESCRIPTION	SIZE	ITEM#	DESCRIPTION	SIZE
SAFETY NEEDLE					
(570-2693)	18 ga x 1"	100/Box	(570-0341)	23 ga x 5/8"	100/Box
(570-2694)	18 ga x 1 1/2"	100/Box	(570-2701)	23 ga x 1"	100/Box
(570-2695)	20 ga x 1"	100/Box	(570-0340)	23 ga x 1 1/2"	100/Box
(570-2697)	20 ga x 1 1/2"	100/Box	(570-2705)	25 ga x 5/8"	100/Box
(570-2696)	21 ga x 1"	100/Box	(570-2703)	25 ga x 1"	100/Box
(570-2698)	21 ga x 1 1/2"	100/Box	(570-2707)	27 ga x 1 1/4"	100/Box
(570-2699)	22 ga x 1"	100/Box	(570-2709)	30 ga x 1/2"	100/Box
(570-2700)	22 ga x 1 1/2"	100/Box			

ITEM#	DESCRIPTION	SIZE	ITEM#	DESCRIPTION	SIZE
NEEDLES					
(112-7106)	16 ga x 1"	100/Box	(900-4473)	23 ga x 1"	100/Box
(112-7116)	16 ga x 1 1/2"	100/Box	(900-4468)	25 ga x 5/8"	100/Box
(900-4469)	18 ga x 1"	100/Box	(112-7112)	25 ga x 1"	100/Box
(900-4471)	18 ga x 1 1/2"	100/Box	(900-4470)	25 ga x 1"	100/Box
(112-7109)	20 ga x 1"	100/Box	(900-4472)	25 ga x 1 1/2"	100/Box
(112-7110)	20 ga x 1 1/2"	100/Box	(112-7108)	27 ga x 1/2"	100/Box
(112-7100)	21 ga x 1"	100/Box	(112-7103)	27 ga x 1 1/4"	100/Box
(112-7111)	21 ga x 1 1/2"	100/Box	(112-6148)	30 ga x 1/2"	100/Box
(112-7107)	22 ga x 1"	100/Box	(112-6149)	30 ga x 1"	100/Box
(112-7101)	22 ga x 1 1/2"	100/Box			



RELY ON US FOR QUALITY, SELECTION, PERFORMANCE, AND VALUE!



SOL-CARE™ Luer-Lock Syringes with Safety Needles SOL-MILLENNIUM

Can be used with any standard Luer-lock or slip-tip syringes. Bevel-up needle allows for low-angle injections. Once activated, the needle remains securely fastened via a double-lock mechanism.

#12558SN, 1 mL, 25 ga x 5/8", Orange (138-7044)	50/box
#12515SN, 1 mL, 25 ga x 1 1/2", Orange (139-6166)	50/box
#12310SN, 1 mL, 23 ga x 1", Blue (139-6165)	50/box
#32558SN, 3 mL, 25 ga x 5/8", Orange (139-2919)	50/box
#32510SN, 3 mL, 25 ga x 1", Orange (138-7465)	50/box
#32310SN, 3 mL, 23 ga x 1", Blue (138-6999)	50/box



SOL-CARE™ Safety Needles SOL-MILLENNIUM

This needle-based safety device helps users easily convert from non-safety to safety, protecting health care workers from exposure to needlestick injuries. The standard hub is compatible with all standard Luer-tip syringes, while the reduction of extra dead space minimizes medication waste. An audible click confirms activation of the safety mechanism.

#SN2510, 25 ga x 1", Orange Cap (138-6994)	100/box
#SN2310, 23 ga x 1", Blue Cap (138-6998)	100/box



SOL-M™ Syringe SOL-MILLENNIUM

Luer-lock, Without Needle

#P180001PP, Low Dead Space, 1 mL (138-6993)	100/box
#P180003, 3 mL (139-6147)	100/box



SOL-CARE™ Luer Lock Safety Syringe with Exchangeable Needles SOL-MILLENNIUM

- Highly transparent barrel with bold, precise scale for perfect visualization and accurate dosage
- Integrated plunger stopper prevents plunger from being pulled out, avoiding exposure to hazardous fluids

3-mL Syringe

#100078IM, 25 ga x 5/8", Orange (261-0258)	100/box
#100077IM, 23 ga x 1", Blue (261-0260)	100/box



SOL-M™ Syringes with Exchangeable Needles SOL-MILLENNIUM

- Non-safety
- Regular wall
- Blister pack
- Luer Lock

3-mL Syringe with Needle

#1832558, 25 ga x 5/8" (139-6149)	100/box
#1832510, 25 ga x 1" (139-6153)	100/box
#1832515, 25 ga x 1 1/2" (139-6151)	100/box
#1832310, 23 ga x 1" (138-7006)	100/box

HENRY SCHEIN®
BRAND PRODUCTS

Rely on Us™

Sharps Containers

From a Name You Can Trust.

- For use by professional health-care givers
- Meets all NIOSH and OSHA regulations
- FDA approved
- Puncture-resistant
- Transparent body and/or top allows for easy viewing
- High-impact and shatter-resistant polypropylene



#0310-1500-HS, 1 qt (112-7149)	ea	#0354-150M-HS, 5 qt (112-7152)	ea	#0320-150R-HS, 2 gal, Rotary Lid (570-0377)	ea
#0310-150T-HS, 1.5 qt (570-0376)	ea	#0319-1500-HS, 1 gal, Slide Lid (570-0378)	ea	#0330-150R-HS, 3 gal (570-0212)	ea
#0322-150R-HS, 2.2 qt (570-0213)	ea	#0319-150R-HS, 1 gal, Rotary Lid (570-0379)	ea	#0380-150R-HS, 8 gal (570-0380)	ea
#0354-150B-HS, 5.4 qt (112-7151)	ea	#0320-1500-HS, 2 gal, Slide Lid (112-7150)	ea		



RELY ON US FOR QUALITY, SELECTION, PERFORMANCE, AND VALUE!

Multiuse Nestable Sharps Containers BD

- Nestable for efficient storage
- Tapered neck and one-way safety valve to prevent tampering and needle bounce-back
- Needle removal port for smooth, one-handed disposal

#305457, 24 qt, Red with Clear Top
(102-4778)



Stackable Container MEDEGEN

#8703, 4 qt (1 gal), Medium, Red
(153-2682)



Sharpstainer® Disposable Container MEDEGEN

Red, autoclavable, and puncture resistant. Tamper-proof locking cap. One-way safety insert.

Small, 0.7 qt, 3½" x 3½" x 5"
(153-3569)

Large, 1.7 qt, 3½" x 3½" x 10"
(153-3888)



Sharpstainer® Disposable Container MEDEGEN

Red, autoclavable, and puncture-resistant. Tamper-proof locking cap. One-way safety insert.

Small, 0.7 qt, 3½" x 3½" x 5"
(153-3569)

Large, 1.7 qt, 3½" x 3½" x 10"
(153-3888)

Tall Tray, 1.7 qt
(153-8085)

Small, 4.7 qt, 10"W x 7¾"H x 6"D
(153-4169)

Medium, 6.2 qt, 10"W x 9½"H x 6"D
(153-2566)

X-large, 23 qt, 12"W x 16½"H x 8½"D
(153-3634)

10 qt
(120-4364)



Renewables™ Sharps Disposal Container CARDINAL HEALTH

- Manufactured using recycled plastics
- Reduces waste into landfills and incinerators
- Promotes a positive image of the healthcare industry
- Saves fossil fuels, water, and other precious resources

#8507MW, 5-qt In-Room Container with Counter-Balanced Lid
(890-3944)

#8998PG2, 18-gal Container with Hinged Lid
(890-0210)



Phlebotomy Container, 1 Quart BEMIS HEALTHCARE

- Fits phlebotomy trays
- Dual openings; vertical drop
- Dimensions: 6¾"H x 4¼" W x 4¼"L
- Uses holder #400 to secure container on tray or tabletop

#100-030, Translucent Red
(122-4680)

Back to School, Backed by Precision Cooling

NSF Certified cold storage that passes every test—
providing trusted vaccine protection for the school year ahead.



Your Vaccine Cold Storage Checklist:

- ✓ Extensive range of models from 1 to 49 ft³
- ✓ Superior temperature control & recovery
- ✓ Eco-friendly refrigerants reduce energy costs
- ✓ Space-saving designs for any facility
- ✓ Fastest lead times in the industry

Shop Now!



Cold Storage Solutions

Purpose-Built for Your Vaccine Needs

HENRY SCHEIN[®]
MEDICAL

Rely on Us[™]

accucold[®]

PHARMA-VAC
PERFORMANCE



Introducing the industry's largest selection of refrigeration certified to the latest NSF/ANSI 456 Vaccine Storage Standard

Ensure vaccine integrity with the proper storage conditions. **Accucold's Pharma-Vac Performance Series** features refrigeration designed and purpose-built to the CDC/VFC vaccine storage guidelines, fully equipped for an optimized efficient performance with stable temperature, quiet operation, and an eco-friendly green footprint.

HSI Item # (Glass Door)	HSI Item # (Solid Door)	Accucold Item # (Glass Door)	Accucold Item # (Solid Door)	Capacity	H x W x D	Installation	Shelves	Fans
143-5669	143-5668	ARG1PV456	ARS1PV456	1 cu.ft.	21.5" x 17.5" x 19.5"	Freestanding	3	1
143-5671	143-5670	ARG31PVBIDA456	ARS32PVBIDA456	2.83 cu.ft.	32" x 19.75" x 22.63"	Recessed	4	1
143-5666	143-5402	ARG3PV456	ARS3PV456	3 cu.ft.	34" x 18.5" x 19"	Freestanding	4	1
143-5672	143-5673	ARG61PVBIDA456	ARS62PVBIDA456	6 cu.ft.	31.75" x 23.38" x 25"	Recessed	4	1
143-5663	143-5664	ARG6PV456	ARS6PV456	6 cu.ft.	32.5" x 23.38" x 24.38"	Freestanding	4	1
143-5750	143-5759	ARG8PV456	ARS8PV456	8 cu.ft.	50" x 23.38" x 24.38"	Freestanding	7	2
143-5667	143-5757	ARG12PV456	ARS12PV456	12 cu.ft.	61.75" x 23.38" x 24.38"	Freestanding	7	2
143-5665	143-5662	ARG15PV456	ARS15PV456	15 cu.ft.	72" x 23.38" x 24.38"	Freestanding	7	2
143-5753	143-5752	ARG18PV456	ARS18PV456	18 cu.ft.	78.5" x 27.5" x 26"	Freestanding	7	2

The complete Accucold
Pharma-Vac Performance Series
is available through
henryschein.com/medical.

For more information,
contact your local Henry Schein
Medical Representative.



OneStep+ Ultra Flu Test

From a Name You Can Trust.

Intended for the qualitative detection of influenza type A and type B nucleoprotein antigens directly from nasal and nasopharyngeal swab specimens from patients with signs and symptoms of respiratory infection.

- CLIA waived
- Results in 10 minutes
- Sensitivity (A/B): 90.3%/88%
- Specificity (A/B): 96.7%/99.2%
- For use with nasal and nasopharyngeal swab specimens
- Made in the USA

(570-1886)..... 25/box

Contains: 25 test sticks, 25 sterile nasal swabs, 27 extraction buffer vials, 1 influenza A control swab & 1 influenza B control swab.

CPT® Codes: Influenza A, 87804QW†/Influenza B, 87804QW-59†



RELY ON US FOR QUALITY, SELECTION, PERFORMANCE, AND VALUE!



OneStep+ Strep A Test Strips



Convenient, compact packaging with everything needed to run 25 tests including positive and negative controls.

- CLIA waived
- Sensitivity: 97%; specificity: 95%
- Room-temperature storage
- Canister packaging for ease of multiple testing
- Walk-away procedure
- 25 tests including external negative and positive controls

(107-4050)..... 25/box

(570-0122)..... 50/box

CPT® Code: 87880QW†



OneStep Pro+ Strep A Cassette Kit



- CLIA-waived
- Easy-to-use flip design; all-in-one extraction, incubation, and test
- Results in 5–10 minutes
- Sensitivity of 96.2% and specificity of 98.7%
- External negative and positive controls included
- Made in the USA

(900-7570)..... 25 tests/kit

CPT® Code: 87880QW†



OneStep+ Ultra Mono Test



- 3-step process
- 5-minute time to result
- Dipstick test
- Whole blood, serum, or plasma sample type
- CLIA-waived for whole blood
- Moderate complexity for serum and plasma
- Performance (reconciled with EBV serology): 100% sensitivity; 95.9% specificity

(570-1728)..... 25/box

Contains: 25 each of: test sticks in a container, test tubes, transfer pipettes, 50-µL capillary pipettes; and 1 each of: diluent, mono positive control, mono negative control, workstation & package insert.

CPT® Code: 86308QW† (whole blood); 86308† (serum and plasma)



No instrument, no problem

QuickVue® Rapid Lateral-Flow Tests produce accurate results in minutes, allowing for faster diagnosis and treatment



Easy to interpret

Visually read test that incorporates internal procedural controls and a two-color result to help ensure accuracy. Everything you need is included in the kit.



Easy to implement

Test kits do not require an instrument, which reduces implementation set-up and counter-top space, and removes recurring maintenance and software updates.



QuickVue®

Broad testing menu

The broad testing menu allows you to customize your test-to-treat program based on your organization's needs.

SARS Antigen
Influenza A+B | Strep A
RSV | H. pylori
iFOB



Learn more about QuickVue tests by scanning the QR code, visiting quidelortho.com, or reaching out to your Henry Schein representative.

New QuidelOrtho branding may not be available in all markets, subject to country-specific regulatory approval. Please confirm with your local commercial team.

© 2025 QuidelOrtho Corporation PR-105741-NA-EN-US-v1



QuickVue® Influenza Tests QUIDELORTHO

An immunoassay for detecting influenza types A and B. Three simple steps with results in 10 minutes or less. Color-coded procedure card helps demonstrate each step of test. Kit contains positive and negative controls, and stores at room temperature.

- Detects both A and B types of influenza
- CLIA waived
- Sensitivity (A/B): 94%/70%
- Specificity (A/B): 90%/97%
- Color-coded procedure card helps demonstrate each step of the test
- No instrumentation needed
- Results in 10 minutes or less, right in the exam room
- Room-temperature storage with up to a 24-month shelf life from date of manufacture
- Made in the USA

#20183, A+B Test, Differentiates Type A or Type B (227-5611)..... 25/box

#20171, Transport Tubes* with 25 Sterile Foam Swabs Inside Plastic Transport Tubes (227-3550)..... 25/box

CPT® Codes: Influenza A, 87804QW¹/
Influenza B, 87804-59²

25MS6602



QuickVue+® Strep A Tests QUIDELORTHO

- Built-in controls for CLIA compliance
- Easy test procedure
- ± endpoint
- Built-in workstation
- Sensitivity: 95%
- Specificity: 98%
- Overall agreement: 98%
- Room-temperature storage
- Moderately complex
- Made in the USA

#20122
(489-0075)..... 25/box

CPT® Code: 87880¹



QuickVue In-Line® One-Step Strep A Tests QUIDELORTHO

True one-step test with a unique in-line extraction and rapid procedure that allows testing to occur right at the point of care. Two-color results give you clear readability, as well as proven accuracy and dependable results. Kit stores at room temperature and includes positive and negative external controls.

QuickVue® RSV Tests QUIDELORTHO

- CLIA waived
- Sensitivity: 92%
- Specificity: 92%
- Easy-to-use dipstick format
- 3-step procedure
- 2-color results in 15 minutes
- Room-temperature storage
- Built-in internal controls
- Kit includes external controls
- 18 years and younger
- Made in the USA

#20193
(227-0581)..... 20/box

CPT® Code: 87807QW²



- Built-in controls for CLIA waived
- Easy to use and easy to read
- 2-color, rapid results in 5 minutes
- Sensitivity: 92%
- Specificity: 99%
- Room-temperature storage
- Made in the USA

#0343
(227-4207).....25/box

CPT® Code: 87804QW¹

Meet Our Awesome Family

BV • STREP • FLU A&B • TRICHOMONAS • H. PYLORI • MONO • RSV • HCG • IFOB



Beverly

Streppy

Sniffy

Trixie



Henry P. Lori



Smooch



Ruvee



Not all products are available in all countries.

© 2025 SEKISUI Diagnostics, LLC. All rights reserved. OSOM® is a registered U.S. trademark of SEKISUI Diagnostics, LLC. Because every result matters™ is a trademark of SEKISUI Diagnostics, LLC.

Today's healthcare environment is challenging. Let our team help you **minimize variability**, **provide standardization options**, and **reduce overall costs** with our rapid diagnostics products and services.

Answers for Healthcare. Awesome...yes, OSOM®.

Contact your Henry Schein Sales Rep for more information or visit [HenrySchein.com/Medical](https://www.henryschein.com/Medical).



SEKISUI
DIAGNOSTICS
Because every result matters™



OSOM® Strep A Test Kit

SEKISUI

- Simple to use: get easy-to-read results in 4 easy steps, with no need for additional equipment
- Trust the results: high sensitivity and specificity with results in just 5 minutes
- Easy-to-read, 2-color results: blue test line and red control line
- Collect and detect: qualitative detection of group A streptococci antigens from throat swabs; can also confirm presumptive group A streptococcal colonies recovered from cultures less than 72 hours old
- QC Inside™: 2 extra tests included at no additional charge to run external quality control testing for more confidence in the results
- Made in the USA

#141
(224-7320)..... 52/box

CPT® Code: 87880QW*



OSOM® Ultra Strep A Tests

SEKISUI

Faster results for faster treatment—statistically equivalent to single-swab culture with results in just 5 minutes.

- Simple to use—Get easy-to-read results in 4 easy steps and no need for additional equipment
- Greater sensitivity—Antibody-labeled color particles coated at 2 separate locations allows for greater sensitivity than conventional single-label technology without sacrificing specificity
- Easy-to-read 2-color results
- Simplify reagent addition—single reagent delivery system in 25-test kit eliminates the need to handle 2 separate reagents
- QC Inside™—2 extra tests included in the 50-test kit at no additional charge to run external quality-control testing for more confidence in results
- Made in the USA

#147
(392-7389)..... 25/box

#149 (Includes 2 additional tests for external QC testing.)

(102-7617)..... 52/box

CPT® Code: 87880QW*

Ask about RGS. Genzyme compares to rigorous Gold Standard.



“All done!”

Evaluate, test and treat in one visit.

Some BD Veritor™ assays are authorized under an EUA by the FDA. See website for details.
BD, the BD Logo and Veritor are trademarks of Becton, Dickinson and Company or its affiliates.
© 2025 BD. All rights reserved. BD-141207

BDVeritor.com



**BD Veritor™
Plus System
BD**

- Faster access to test results: Help inform appropriate and targeted treatment decisions

- Improved workflow: The BD Veritor™ Plus Analyzer improves workflow with an Analyze Now or Walk Away mode, providing test results (with a print-enabled function) and aiding in decision-making while the patient is on site
- Improved traceability: The BD Veritor™ InfoScan module can scan 3 different identifiers (operator ID, specimen ID, and test kit/lot) that can be locally recorded, printed, or downloaded, and reduces hands-on time through automated documentation
- Modularity: Provides a unique solution to meet each testing site's preference

- Connectivity: BD Veritor™ InfoSync module provides the same benefits as BD Veritor™ InfoScan. Connects and documents tests results across multiple sites and can integrate with a hospital electronic medical record or laboratory information system
- Advanced particle technology: Enhances sensitivity by using a proprietary process to produce highly stable, modified colloidal metal particles
- Adaptive read technology: Compensates for background. Nonspecific binding helps improve specificity to reduce false-positive results

#256066, Veritor Plus Analyzer
(126-5527).....ea




**BD Veritor™ System
Flu A+B Test Kit
BD**

The first CLIA-waived flu A+B test referenced against PCR, a higher sensitivity standard than culture. Device is ready to insert into reader 10 minutes after sample is added.

- Positive percent agreement (A/B): 82.1%/74.6
- Negative percent agreement (A/B): 98.6%/99.6%
- Positive agreement vs. PCR for current visual read rapid tests ranges from 10% to 70%
- Streamlined workflow: Provides a digital result in <11 minutes, with <50 seconds of hands-on time

#256045, Flu A+B Test Kit
(992-0002).....30/box

CPT® Codes: Influenza A: 87804QW* / Influenza B: 87804-59*[†]; Using the Objective and Differentiated Reader System: 87999*




**BD Veritor™ System
RSV CLIA-Waived Kit
BD**

The first CLIA-waived RSV test referenced against a higher sensitivity standard than culture. Test device is ready to insert into reader 10 minutes after sample is added. The same sample processed for RSV can also be used for flu A+B. Digital results displayed in 10 seconds.

- Sample type: NP swab sample
- Positive percent agreement (PPA): 81.6%
- Negative percent agreement: (NPA): 99.1%
- 6 years and younger

#256038, RSV Test
(121-7553).....30/box

CPT® Code: 87807QW*



**BD Veritor™ System
Group A Strep Test
BD**

The first CLIA-waived digital immunoassay (DIA) for the rapid detection of Group A strep (GAS) with an instrumented result. Test device is ready to insert into reader 5 minutes after sample is added. Once the test device is inserted in the reader, an objective, digital test result is displayed in 10 seconds.

- Sample type: Throat swab sample
- Sensitivity*: 95.4%
- Specificity*: 95.7%

#256040, Strep A Test
(992-0006).....30/box

CPT® Code: 87880QW*
*Reference method: Bacterial culture; data from package insert.



Test smart, breathe easy

The Sofia® 2 Analyzer makes respiratory testing for the school year easy

Back-to-school season means respiratory syncytial virus (RSV) and strep are back in season, too. Be prepared for all your patient testing needs with advanced diagnostic solutions from QuidelOrtho.

- RSV
- Flu + SARS Antigen*
- SARS Antigen*
- SARS Antigen+**
- Influenza A+B
- Strep A+



For more information scan the QR code, contact your
Henry Schein Representative.



*Available under Emergency Use Authorization
**Sofia 2 SARS Antigen+ FIA received De Novo FDA clearance on March 8, 2023
and CLIA waiver from the FDA on September 21, 2023
New QuidelOrtho branding may not be available in all markets, subject to country-
specific regulatory approval. Please confirm with your local commercial team.
© 2025 QuidelOrtho Corporation. All rights reserved. PR-107983-NA-EN-US-v1



Sofia® Influenza A+B FIA Test QUIDELORTHO

This CLIA-waived test uses advanced immunofluorescence-based lateral-flow technology to detect influenza A and B viral nucleoprotein antigens in nasal and nasopharyngeal swab and nasopharyngeal aspirate/wash specimens taken directly from symptomatic patients.

- Enhanced assay sensitivity
- Results in 15 minutes
- Accurate detection with nasal swab, NP swab and NPA/wash samples
- Nasal swab sensitivity (A/B): 90%/89%; specificity (A/B): 95%/96%
- NP swab sensitivity (A/B): 97%/90%; specificity (A/B): 95%/97%
- NPA/wash sensitivity (A/B): 99%/88%; specificity (A/B): 96%/96%
- Room temperature storage
- 21-month shelf life from date of manufacture
- For use with Sofia Analyzer (sold separately)
- CLIA-waived for nasal and nasopharyngeal swabs

#20299, Sofia 2 Analyzer
(128-5292).....ea

#20218, Sofia Influenza A+B Test
(122-4092).....25/box

CPT® Codes: Influenza A: 87804QW†; Influenza B: 87804-59†



Sofia® RSV FIA Test Kits QUIDELORTHO

A 15-minute test that has a walk-away automation feature that allows user to multitask. Offers accurate detection with nasopharyngeal swabs, or aspirate/wash samples. CLIA-waived for children less than 7 years of age, and moderately complex for pediatric patients from age 7 to less than 19 years of age.

- Single specimen may be used to run both Sofia influenza and RSV FIA tests
- Room temperature storage
- 24-month shelf life from date of manufacture
- For use with Sofia Analyzer (sold separately)

#20260
(122-4091).....25/box

CPT® Code: 87807†



Sofia® Rapid Strep A Test QUIDELORTHO

Easy-to-use test with enhanced assay sensitivity and results in 5 minutes. With results available in minutes, you can rapidly diagnose and treat, all in the same visit.

- Accurate detection with throat swab samples
- Sensitivity: 90.6 %
- Specificity: 96.1%
- Room temperature storage
- 24-month shelf life from date of manufacture
- For use with Sofia Analyzer (sold separately)

#20274, Sofia Strep A+
(122-7865).....25/box

CPT® Code: 87880†



SAY AH!



SIMPLIFIED STREP A TESTING

ID NOW™ STREP A 2 TEST makes testing easy. Collect a single throat swab, test and provide treatment, all during the patient encounter.

- Actionable, reliable, molecular **results in 2–6 minutes¹**
- 90% fewer false negatives than antigen tests*²
- No culture confirmation needed

ID NOW™ RESPIRATORY ASSAY MENU

COVID-19 6–12 mins	Influenza A & B 5–13 mins ³	Strep A 2–6 mins ¹	RSV ≤ 13 mins
------------------------------	--	---	-------------------------



For in vitro Diagnostic Use Only

CONTACT YOUR HENRY SCHEIN REPRESENTATIVE OR SCAN THE QR CODE TO LEARN MORE



*Test sensitivity performance comparison of antigen tests and the ID NOW™ Strep A 2

1. ID NOW™ Strep A 2 clinical trial data, held on file. 2. Cohen JF, et al. Rapid antigen detection test for group A streptococcus in children with pharyngitis (Review). Cochrane Database Syst Rev. 2016 Jul 4;7(7):CD010502. 3. ID NOW™ Influenza A & B 2 clinical trial data, held on file.

© 2025. All rights reserved. All trademarks referenced are trademarks of their respective owners. Any photos displayed are for illustrative purposes only. Any person depicted in such photos is a model. RDx-25001333-01 04/25




WHICH ONE WILL YOU MISDIAGNOSE?

ANTIGEN MISSES 1 IN 3 CASES.*

Cepheid delivers high-performing test results, with up to 99% PPA for Xpert® **Xpress** CoV-2 **plus**[^] — eliminating the uncertainty.

**Elevate your standard of care with Cepheid,
the global leader in PCR testing.[#]**

 Visit cepheid.com

DANA



SARAH



EMILY



© 2025 Cepheid.

Xpert Xpress CoV-2 plus (XPRS-COV2-10) is a US-IVD. For In Vitro Diagnostic Use for CLIA Moderate Complexity only.

Xpert Xpress CoV-2 plus EUA (XP3SARS-COV2-10) test has not been FDA cleared or approved. This test has been authorized by FDA under an EUA for use by authorized laboratories. Xpert Xpress CoV-2 plus has been authorized only for the detection of nucleic acids from SARS-CoV-2, and not for any other viruses or pathogens. The emergency use of this product is only authorized for the duration of the declaration that circumstances exist justifying the authorization of emergency use of in vitro diagnostics for detection and/or diagnosis of COVID-19 under Section 564(b)(1) of the Federal Food, Drug and Cosmetic Act, 21 U.S.C. § 360bbb-3(b)(1), unless the declaration is terminated or authorization is revoked sooner.

* Smith-Jeffcoat SE, Mellis AM, Grijalva CG, et al. SARS-CoV-2 Viral Shedding and Rapid Antigen Test Performance — Respiratory Virus Transmission Network, November 2022–May 2023. MMWR Morb Mortal Wkly Rep 2024;73:365–371. DOI: <http://dx.doi.org/10.15585/mmwr.mm73.16.a2>

[^] Xpert Xpress CoV-2 (XPRS-COV2-10) is 99.3% for anterior nasal swab specimen for PPA.

[#] 2023 IVD nucleic acid testing market analysis. MDx, molecular diagnostics. Data on file.



LAB-ACCURATE RESULTS—ON SITE. IN MINUTES.

POINT OF CARE

i-STAT® SYSTEM + PICCOLO XPRESS CHEMISTRY ANALYZER**FAST**

Results in minutes*, accelerating patient care decisions.

ACCURATE

Lab-accurate results for a wide range of tests.*

VERSATILE

Supports testing in a variety of care settings.

IMPACTFUL

Improve patient satisfaction with convenient, on-site testing.

*Data on file Abbott Point of Care Inc, Instructions for use, test comparison tables.

***i*-STAT SYSTEM**

- Data easily integrated into EMR and/or LIS
- Expert support for successful implementation, including 24/7 technical support

CLIA WAIVED TESTS:

Creatinine

***i*-STAT**

i-STAT Part No: 04J60-20 Waived Kit,
04J48-50 Moderately Complex Kit,
06F20-20 Waived Analyzer,
04P75-03 Moderately Complex Analyzer

**PICCOLO XPRESS**

- Comprehensive CLIA-waived menu available
- Intuitive function to increase operational efficiency

CLIA WAIVED TESTS:

CMP, BMP, Lipid Panel, Lipid Panel Plus, General Chemistry, Kidney Check, Renal Panel, MetLyte 8 and Electrolytes

piccolo xpress
chemistry analyzer

Piccolo Xpress Part No:
07P05-50 Piccolo Xpress with 3YR Serv,
07P05-51 Piccolo Xpress with 5YR Serv

**TO LEARN MORE**

contact your Abbott Point of Care representative, your distribution representative, or visit www.globalpointofcare.abbott

©Abbott Point of Care Inc. | *i*-STAT is a trademark of Abbott. | For in vitro diagnostic use only.
This material is intended for a U.S. audience only. | 400 College Road East, Princeton, NJ 08540
USA | (609) 454-9000 | (609) 419-9370 (fax) | www.globalpointofcare.abbott | Piccolo Xpress
is a registered trademark of Abaxis, Inc. and distributed by Abbott Point of Care. | Abaxis
888-3355 Rev A Henry Schein Ad — Abbott POC *i*-STAT/Piccolo | 4930.Rev1.APOC.EN-US 07/23


**Piccolo Xpress®
Chemistry Analyzer**
ABBOTT

Three steps, 12 minutes. The Piccolo Xpress® chemistry analyzer allows health care practitioners to perform routine multichemistry panels using 0.1 cc—only 3 or 4 drops—of whole blood, serum, or plasma.

- **Speed:** Add the sample, insert the reagent disc, and in approximately 12 minutes receive a report suitable for the patient file or transferred to a computer, printer, or LIS/EMR.
- **Ease:** A fully automated system requiring no special operating skills.
- **Exclusivity:** Offers the only CLIA-waived comprehensive metabolic panel (CMP) blood test on the market.
- **Accuracy:** Self-calibrates with each run. The onboard continuous intelligent Quality Control (iQCT) monitors the analyzer, reagent reactions, and sample to ensure chemistry and instrument integrity.



#07P05-01, Piccolo Xpress® Chemistry Analyzer
(106-6368).....ea

Contains: 0.1 cc minipette, minipette tips, power cord, power supply, printer results paper & owners manual.

CLIA-Waived Test Panels

#07P02-08, Comprehensive Metabolic Panel: ALB, ALP, ALT, AST, BUN, Ca, Cl-, CRE, GLU, K+, Na+, TBIL, tCO₂, TP
(174-6978).....10/box

#07P02-04, Basic Metabolic Panel: BUN, Ca, Cl-, CRE, GLU, K+, Na+, tCO₂, eGFR*
(137-3987).....10/box

#07P02-05, Lipid Panel: CHOL, CHOL/HDL*, nHDLc*, HDL, LDL*, TRIG, VLDL* (* Calculated)
(146-0189).....10/box

#07P02-12, Lipid Panel Plus: ALT, AST, CHOL, CHOL/HDL*, nHDLc*, GLU, HDL, LDL*, TRIG, VLDL* (* Calculated)
(104-6269).....10/box

#07P02-10, Liver Panel Plus: ALB, ALP, ALT, AMY, AST, GGT, TBIL, TP
(104-3998).....10/box

#07P02-01, General Chemistry 6: ALT, AST, BUN, CRE, GGT, GLU, eGFR*
(108-5450).....10/box

#07P02-11, General Chemistry 13: ALB, ALP, ALT, AMY, AST, BUN, Ca, CRE, GGT, GLU, TBIL, TP, UA, eGFR*
(982-0407).....10/box

#07P02-02, Electrolyte Panel: Cl-, K+, Na+, tCO₂
(106-1669).....10/box

#07P02-09, Kidney Check: BUN, CRE, eGFR*
(109-7255).....10/box

#07P02-07, Renal Function Panel: ALB, BUN, Ca, Cl-, CRE, GLU, K+, Na+, PHOS, tCO₂, eGFR*
(166-0886).....10/box

#07P02-03, MetLyte 8 Panel: BUN, CK, Cl-, CRE, GLU, K+, Na+, tCO₂, eGFR*
(114-1284).....10/box

Moderately Complex Test Panels

#07P02-06, Hepatic Function Panel: ALB, ALP, ALT, AST, DBIL, TBIL, TP
(195-7347).....10/box

#07P02-13, Basic Metabolic Panel Plus: BUN, Ca, Cl-, CRE, GLU, K+, Na+, tCO₂, Mg, Lactate Dehydrogenase
(104-5577).....10/box

#07P02-14, MetLyte Plus CRP: BUN, CK, Cl-, CRE, GLU, K+, Na+, tCO₂, CRP
(115-5701).....10/box

#07P02-15, BioChemistry Panel Plus: ALB, ALP, ALT, AMY, AST, BUN, Ca, CRE, CRP, GGT, GLU, TP, UA
(116-9038).....10/box

#07P02-16, MetLac 12 Panel: ALB, BUN, Ca, Cl-, CRE, GLU, LAC, K+, Mg, Na+, PHOS, tCO₂, eGFR*
(631-0050).....10/box



SAVE YOUR PEDIATRIC PATIENT A TRIP TO THE LAB.

**NO NEED TO WAIT. GIVE PATIENTS
TEST RESULTS IN 5 MINUTES.**

**What percentage of your 9 to 11 and
17 to 21-year-old patients are getting
their lipids screened?**

Unlock the potential in pediatric testing by
screening for FH* to NIH guidelines and
reducing risk associated with early CVD.



Benefits of point-of-care lipid testing



Small 40 μ L
fingerstick sample



Convenient for kids,
parents, and HCPs



Accurate, reliable
results in 5 minutes

Contact your Henry Schein representative to learn more.

* FH = familial hypercholesterolemia.
Cholestech is not for use in children under the age of 2 years or patients with hyperbilirubinemia (elevated bilirubin levels).
©2025 Abbott RDx-25000440 LITHO IN USA



Afinion™ 2 Analyzer ABBOTT

With its compact size and panel of tests, the Afinion 2 system is ideal for point-of-care testing in physician offices, clinics, community health centers, and hospital outpatient clinics. From just a small urine or fingerstick whole-blood sample, lab-accurate results for ACR and HbA1c are made available during the consultation. With built-in connectivity, the Afinion 2 Analyzer can communicate with LIS and HIS systems to share and manage data more effectively, contributing to better patient management everywhere.

- Size: 7.2" x 7.5" x 13"
- Weight: 7½ lb
- Patient/operator ID and patient/control results stored in memory
- No maintenance required
- No operator calibration
- Extensive and comprehensive failsafe systems prevent the possibility of erroneous results
- QC and operator lockout
- Afinion tests can be used with both the Afinion 2 Analyzer and the Alere Afinion AS100 Analyzer



#1116985, Afinion 2 Analyzer (136-7869).....	ea	#26333, Universal Printer Labels (119-8813).....	ea
#1116784, Analyzer Cleaning Kit (136-4626).....	50/box	#1115349, Barcode Scanner (119-8889).....	ea
#14-716AFI, Universal Printer with Power Supply (119-8807).....	ea		



Afinion™ ACR Test ABBOTT

Test for quantitative determination of albumin, creatinine, and albumin/creatinine ratio (ACR) in human urine, used for early identification of renal disease in patients with diabetes and/or hypertension.

- Lab-quality results in 5 minutes
- 3.5 µL of random/spot urine sample
- Quantitative results
- Increased accuracy by measuring creatinine

#1116972, ACR Test (136-4619).....	15/box
#1116973, ACR Controls (136-4620).....	ea



Afinion™ HbA1c Test ABBOTT

Test for quantitative determination of glycated hemoglobin (HbA1c) in human whole blood, used to monitor metabolic control in patients with diabetes.

- 3-minute test time
- Excellent precision (<3% CV)
- No interference from Hb variants
- NGSP and IFCC certified
- CLIA-waived

#1116974, HbA1c Tests (136-4596).....	15/box
#1116975, HbA1c Control (136-4618).....	ea

Childhood is Full of Firsts

Make sure kids get their first cholesterol screening between the ages of 9 and 11.¹



Make it easy with CardioChek® Plus.

Results in as little as 90 seconds from a fingerstick.



HS Item # 570-1523

Lipid Panel Starter Bundle

1 Sleeth, C. M., Peterson, A. L., & Hotanson, J. (2020, July 1). Pediatric dyslipidemia screening by pediatricians and family medicine physicians: Current practices and future directions. American Academy of Pediatrics. https://publications.aap.org/pediatrics/article/146/1_MeetingAbstract/636/4732/Pediatric-dyslipidemia-screening-by-pediatricians?autologincheck=redirected

©2025 Polymer Technology Systems, Inc. MKG 003137 Rev. 5 03/2025

CardioChek® Plus Analyzer

HENRY SCHEIN®

Fast, Accurate, Efficient Lipid and Glucose Results at the Point of Care

Recognizing the strong connection between heart attack, stroke, and diabetes, the CardioChek® Plus Analyzer provides rapid, on-site blood-chemistry values and measurements to help identify at-risk individuals.

- Fast: On-site lipid and glucose results in as little as 90 seconds; simple, quality-control testing
- Portable: compact and lightweight, easy to transport and store; handheld and battery-operated; and room-temperature test strips
- Patient-friendly: fingerstick with sample size of 1.1 µL to 40 µL
- Wireless communication: easy data transfer
- Measures total and HDL cholesterol, triglycerides, and glucose
- Calculates LDL and non-HDL cholesterol as well as TC/HDL and LDL/HDL ratios
- Certified accuracy
- CLIA waived
- Meets NCEP guidelines for accuracy and precision
- FCC- and ISO-certified wireless communications
- CMLN-certified for CHOL and HDL tests
- FDA cleared

#PTS-2700-HS
(570-0411).....ea

PTS Panels® Starter Kit

HENRY SCHEIN®

#PTS-4060-HS

(570-1036).....ea

Contains: 1 analyzer, 60 lipid/glucose tests, multichemistry controls & 40-µL cap tubes.

PTS Panels® eGlucose Test Strips

HENRY SCHEIN®

#PTS-2713-HS

(570-0415).....50/box

Contains: 50 test strips.

PTS Panels® Lipid Test Strips

HENRY SCHEIN®

#PTS-1710-HS

(570-0414).....15/box

Contains: 15 test strips.

PTS Panels® Lipid/Glucose Smart Bundle 2-Pack

HENRY SCHEIN®

#PTS-2729-HS

(570-0412).....2/pkg

Contains: 1 of each: 15-count lipid test-strip vials & 15-count vial of glucose test strips.

PTS Panels® 40-µL Capillary Tubes

HENRY SCHEIN®

#PTS-2866-HS

(570-0413).....16/bag

A1CNow® + Test

HENRY SCHEIN®

The handheld monitor provides accurate, in-office A1C results, enabling physicians to make on-the-spot treatment decisions for diabetes patients.

- In-office testing: no waiting for lab results
- Results in just 5 minutes
- Hands-on procedure time is less than 1 minute
- Simple, 3-step procedure
- CLIA waived
- No calibration, no daily controls, and no maintenance
- No refrigeration necessary if used within 3 months
- No capital equipment required
- Enables A1C testing in every exam room

(570-3428).....20/box

DCA™ Vantage Analyzer SIEMENS HEALTHINEERS

Point-of-care immunoassay analyzer for diabetes management. Provides precise and accurate quantitative test results for HbA1c in whole blood during a patient's visit to help improve decision making. With a single urine sample, the analyzer also provides quantitative test results for low levels of albumin, creatinine, and A:C ratio in the physician's office or clinic.

- #5075US, Analyzer..... ea
 - #5035C, HbA1c Reagent Kit (147-8045)..... 10/pkg
 - #5068A, HbA1c Control Kit (147-6067)..... ea
- Contains: 2 vials of each control: high & low.



Microalbumin/Creatinine Reagent Kits SIEMENS HEALTHINEERS

Detects and monitors albuminuria, an early indication of kidney disease. Achieve test results in just 7 minutes from a urine specimen, using the DCA™ Vantage Analyzer.

- Made in the USA
 - #6011A (147-8917)..... 10/pkg
- CPT® Codes: 83036QW†/82043†/82570†



DCA Microalbumin/Creatinine Control Kit

SIEMENS HEALTHINEERS

- Made in the USA
 - #6012A (147-8477)..... ea
- Contains: 2 vials of ea control (high & low) & reconstitution fluid.



Liquid Whole Blood hbA1C Controls NOVA-ONE DIAGNOSTICS

- Control can be used on ChekA1CNow, Siemens DCA, Tosoh G7 and G8, and Primus Ultra 2.
- #NOD13122-100 4-Vial Kit, 1 mL 2 Level 1 and 2 Level 2 (111-9856)..... ea



Liquid Whole Blood hbA1C Controls NOVA-ONE DIAGNOSTICS

- Control can be used on ChekA1CNow, Siemens DCA, Tosoh G7 and G8, and Primus Ultra 2.
- #NOD13111-100 2-Vial Kit, 1 mL 1 Level 1 and 1 Level 2 (111-9857)..... ea



OneStep™ + Pro Hb Analyzer

HENRY SCHEIN®

This point-of-care hemoglobin analyzer is designed to provide quantitative, lab-quality hemoglobin results in only 3 seconds.

- Reagent-free microcuvettes
- Microcuvette shelf life of up to 2 years, even after the canister has been opened
- Cleared for use on patients 6 months old or older
- Measurement range 5 to 25.6 g/dL
- Small, 15-µL sample volume
- 3¼" color LCD display
- CLIA waived

Starter Kit

(570-1314).....ea
Contains: 1 analyzer, 1 box of 100 microcuvettes, 1 optical system check, 4 AA batteries & 1 USB cable.

Analyzer

(570-1311).....ea
Contains: 1 analyzer, 4 AA batteries & 1 USB cable.

Microcuvettes

(570-1312)..... 200/box
Contains: 4 canisters of 50 cuvettes.

Controls Set

(570-1313).....ea
Contains: 3 levels of controls: Low, Mid & High.

Optical System Check

(570-1322).....ea
Contains: ID chip & microcuvette.

True Metrix® Pro Meter

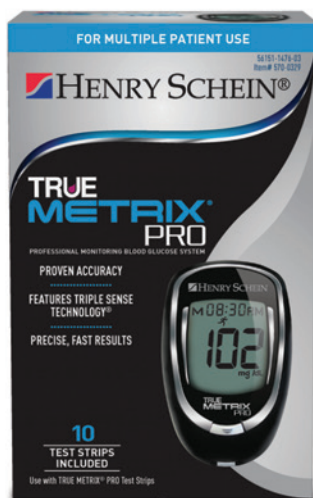
HENRY SCHEIN®

- No coding
- Tiny, 0.5-µL sample size
- Stores 500 results
- As fast as 4 seconds
- BG range: 20–600
- Data management
- Download capabilities
- Glucose control detection
- Strip-release button

#RE4099P-43

(570-3418).....ea

Contains: 1 True Metrix® Pro meter, installed 3-volt battery, instructions for use, logbook & compact carrying case.



True Metrix® Pro Strips

HENRY SCHEIN®

Advanced technologies—the meter, a complex algorithm, chemistry, and electrodes—on the test strip work together as part of the True Metrix® Pro system to produce accurate results. Featuring Triple Sense Technology™, the system provides proven accuracy and confidence in results.

- No-coding technology eliminates need for coding of meter
- Code is assigned during manufacturing process
- Code is printed onto contacts on end of test strip
- Meter reads code on insertion

#R3099P-450, Strips

(570-0327)..... 50/box

Controls

#R5H01-1, Level 1

(125-4034).....ea

#R5H01-2, Level 2

(125-4035).....ea

#R5H01-3, Level 3

(125-4036).....ea





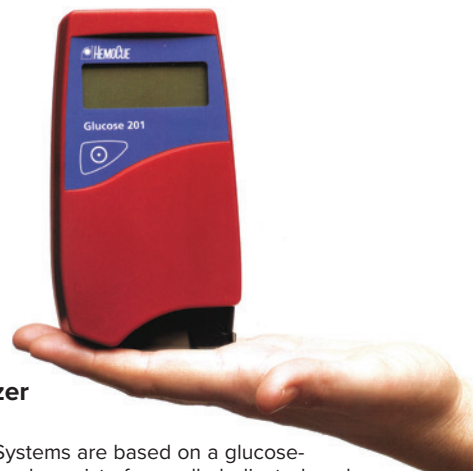
Hb 801 Analyzer HEMOCUE

The HemoCue® Hb 801 system seamlessly integrates point-of-care testing into your workflow.

- Wireless connectivity through middleware
- Results in under 1 second
- Reagent-free cuvettes, improving open-vial stability
- Large display with intuitive on-screen symbols
- Internal quality control self-test
- USB adapter (included) or 3 AA batteries (not included) power supply

Hb 801 Analyzer
(135-3349)..... ea

Hb 801 Hemoglobin Microcuvettes
(135-3352)..... 200/box
Contains: 25 per bottle, 4 bottles per box.



Glucose 201 Analyzer HEMOCUE

The HemoCue Glucose Systems are based on a glucose-dehydrogenase method and consist of a small, dedicated analyzer and a unique, disposable microcuvette. They will produce lab-accurate results for diagnosing or monitoring diabetes, as well as monitoring neonatal blood glucose levels.

- More accurate and 68% higher reimbursement than glucose meters
- FDA-compliant unit when screening and diagnosing
- Analyzer: 0–444 mg/dL (0–24.6 mmol/L)
- Only 5 µL of capillary, venous, or arterial blood is needed
- No inherent limitations related to hematocrit or known drug interferences
- No recalibration needed between cuvette lots
- 3-year warranty

#120706, Analyzer
(104-2290).....ea

#110706, Microcuvettes, Glucose
(439-9158)..... 100/box



Hb 201+ Handheld Hemoglobin Analyzer HEMOCUE

Offers the same important benefits as its predecessor, the B-Hemoglobin Photometer. Smaller size gives more flexibility and mobility to use the system anytime and anywhere. Performs an internal self-test. No control cuvette required.

- Produces results in less than 1 minute with lab-quality accuracy
- 3 easy steps
- Precalibrated, portable analyzer that requires minimal maintenance
- No calibration or instrument manipulation (between cuvette/reagent batches) is needed
- Safe and easy to use
- Reimbursable
- CLIA '88 waived
- 3-year warranty

#121721, Analyzer
(345-2344)..... ea
Contains: 1 of each: analyzer, AC adapter, manual & training CD-ROM.

#111715, #3201 Microcuvettes
(110-9167)..... 100/box
Contains: 4 packs of 25.

#111716, Microcuvettes
(345-8733).....200/box
Contains: 4 packs of 50.

OSOM® Trichomonas Rapid Test SEKISUI

- The only CLIA-waived, lateral-flow rapid test for detecting trichomonas while providing 95% agreement with culture and wet mount combined.
- Simple to use—Get easy-to-read results in just 10 minutes and 4 easy steps
 - Eliminate the need for wet mount—Antigen-based rapid test does not require visualization of live organisms
 - CDC-approved method of testing for the detection of *Trichomonas vaginalis*—unaffected by other common infections
 - Trust your results—95% agreement against the Composite Reference Standard (culture and wet mount)
 - Easy to use—Requires minimal training and no additional equipment
 - QC Inside®—2 extra tests included at no additional charge to run external quality-control testing for more confidence in results
 - Made in the USA



#181, Test (406-7631).....	25/box
#182, Control (611-1157).....	ea
CPT® Code: 87808QW†	

OSOM® BVBLUE® Test SEKISUI

For *Gardnerella vaginalis*
Diagnose bacterial vaginosis (BV) in just 10 minutes for faster treatment and education in the same office visit.

- Test for the 4 major pathogens that cause BV in just one test—reacts with sialidase produced by *Gardnerella vaginalis*, *Bacteroides* spp., *Prevotella*, and *Mobiluncus* spp.
- Simple to use—Get easy-to-read results in 4 easy steps and no need for additional equipment
- Decrease the chance of human error with minimal hands-on requirements
- Quicker results—Read results in just 10 minutes
- Easy to read—Instant color change for accurate results
- Get more patient tests per kit—Exclusive QC Inside® provides 2 extra tests at no additional charge to run external quality control testing
- Made in the USA



#183, Test (414-4170).....	25/box
#184, Control (327-4117).....	ea
CPT® Code: 87905QW†	

binx health® io CT/NG Test BINX HEALTH

Designed for use with the binx health io Instrument, this fully automated, rapid, qualitative test is intended for use in point-of-care or clinical laboratory settings for the detection of *Chlamydia trachomatis* and *Neisseria gonorrhoeae* DNA by polymerase chain reaction. The system delivers central lab-quality results in around 30 minutes for both male and female patients. The rapid turnaround time supports test-and-treat patient care at the time of visit for those who need it and curbs unnecessary empiric treatment for those who don't. Additionally, the binx io CT/NG Assay provides clinics with the ability to make a profit performing the testing in-house while providing superior patient care.

- FDA-cleared and CLIA-waived
- Point-of-care (POC) molecular
- Results in 30 minutes
- Sample collection—Male: first catch urine; Female: vaginal swabs (self- or clinician-collected)
- Single-visit results and treatment
- Easy-to-use platform requires no calibration, preventative maintenance, or interpretation of results, and can be used by non-lab-trained personnel



#3.001.001, binx io Instrument (146-7976).....	ea
#3.001.001P, binx io Instrument Placement (147-4888).....	ea
#1.002.001, binx io CT/NG Assay Cartridge (147-1172).....	50/box



Diagnostics Direct Syphilis Health Check™ ORASURE TECHNOLOGIES

Provides results in 10 minutes, enabling patients to learn their status in a single visit. Allows syphilis-positive patients to be connected to care while a lab test is completed for confirmed diagnosis. CLIA-waived for fingerstick whole blood and offers the ability to test in nontraditional testing environments, such as outreach programs and mobile testing clinics. Walk-away procedure allows providers to batch tests, enabling more people to get tested, reducing indirect costs and improving turnaround time. Studies have verified the accuracy at all stages of infection, including latent, which provides the ability to detect infection in pregnant people for identification of potential congenital syphilis at every trimester.

- Ideal for both clinical and nonclinical settings
- Highly accurate: 98.0% sensitivity, 97.2% specificity
- Reads for both IgM and IgG
- Can be easily read in all settings; no need for a reader
- Can be used with people ages 13 years and older

#1001-0698, Syphilis Test Kit (146-4476).....	20/box
#1001-0699, Syphilis +/- Control Set (146-4570).....	2/box

Note: This test is not intended for use in screening blood or plasma donors.
CPT® Code: 86780QW†

#5.002.001, binx Male Urine Specimen Collection Kit (146-9205).....	50/box
--	--------

#5.012.001, binx Vaginal Swab Specimen Collection Kit (146-9206).....	50/box
--	--------

#NATCT(434)-6MC, NATrol™ CT External Run Controls, 1 mL (126-2383).....	6/pkg
--	-------

#NATNG-6MC, NATrol™ NG External Run Controls, 1 mL (126-2386).....	6/pkg
---	-------

CPT® Code: 87491† (CT) and 87591† (NG) individually, or multiorganism code 87801†



OraQuick® HCV Rapid Antibody Test Kit

ORASURE

- The first and only FDA-approved CLIA-waived HCV rapid antibody test
- Lab accuracy (greater than 98% accurate)
- Tests for multiple HCV genotypes
- Easy to use, simple platform
- Rapid results in 20 minutes
- Fingerstick and venipuncture whole blood collection
- Made in the USA

#1001-0181, Test
(810-0012)..... 25/kit

#1001-0180, Test
(810-0013)..... 100/kit

#1001-0182, Rapid Control
(810-0011)..... ea

Contains: 1 bottle of each: positive & negative.

CPT® code: 86803QW†



Sure Check® HIV 1/2 Assay

CHEMBIO

A unique, easy-to-use, self-contained collection and testing device for the rapid, visual detection of antibodies to HIV-1 and HIV-2.

- CLIA waived
- Sample collection and test device in one
- 2-step test procedure
- Room temperature storage: 46°F to 86°F (8°C to 30°C)
- FDA approved
- Sensitivity: 99.7%; Specificity: 99.9%
- Built-in IgG procedural control
- Rapid results: 15 minutes
- Smallest sample size: 2.5 µL

#60-9507-0, Test Kit
(125-9091)..... 25/kit



OraQuick® HIV Rapid Test

CHEMBIO

- Rapid human immunodeficiency virus (HIV) types 1 and 2 (antibody test is a single-use, qualitative immunoassay)
- Detects antibodies to HIV
- Only rapid HIV test for use with specimens for oral fluids, venipuncture whole blood, fingerstick whole blood, and plasma
- CLIA waived for specimens for oral fluids, venipuncture whole blood, and fingerstick; whole blood only
- Simple, 2-step, oral-fluid procedure
- Reliable results in just 20 minutes
- Greater than 99% accuracy
- Made in the USA

#1001-0079, Test
(810-3221)..... 25/box

#1001-0078, Test
(810-6864)..... 100/box

#1001-0077, Control
(810-3390)..... ea

CPT® Code: 86703QW†

Determine™ HIV-1/2 Ag/Ab Combo

ABBOTT

The first FDA-approved rapid point-of-care test that detects both HIV-1/2 antibodies and free HIV-1 p24 antigen. This 4th-generation test has the ability to identify HIV sooner than conventional rapid tests, which rely solely on the presence of HIV-1/2 antibodies. It enables health care providers to diagnose HIV infection earlier.

- Innovative: It's the first rapid point-of-care test that detects both HIV-1/2 antibodies and free HIV-1 p24 antigen
- Empowering: Enables health care providers to diagnose HIV infection earlier, allowing individuals to seek medical care sooner
- Dependable: Built-in quality controls let you know the test is working
- Efficient: Requires minimal training, test in 3 simple steps, and presents clear results in just 20 minutes
- Flexible: Multiple sample types; fingerstick and venous whole blood, serum, or plasma samples



#7D2648
(512-0022)..... 25/box



Sexual Health Test

VISBY MEDICAL

A CLIA-waived, single-use (disposable), instrument-free PCR *in vitro* diagnostic test intended for use in point-of-care or clinical laboratory settings for the rapid detection and differentiation of DNA from *Chlamydia trachomatis*, *Neisseria gonorrhoeae*, and *Trichomonas vaginalis* in self-collected female vaginal swab.

- CLIA waived
- PCR test for chlamydia, gonorrhea, and trichomoniasis
- Result in under 30 minutes
- Vaginal self-collected swab

#PS-400372, Sexual Health Tests
(143-5431)..... 20/case

#PS-000715, Vaginal Specimen Collection Kit
(141-4570)..... 50/kit

* For details, see instructions for use.



OneStep+ Pregnancy Cassette Tests

HENRY SCHEIN®

- Urine test
- CLIA waived
- 25 mIU/mL detection level
- Sensitivity: 99%
- Room-temperature storage

25-Patient Kit
(900-4073).....ea
Contains: 25 pouched tests per kit & 1 package insert.

100-Patient Kit
(900-4074).....ea
Contains: 100 pouched tests per kit & 1 package insert.

CPT® Codes: Urine 81025†/Serum 84703†

Alere™ hCG Cassette Test (25mIU/mL)

ABBOTT

A one-step test for the early detection of human chorionic gonadotropin (hCG), a hormone produced during pregnancy. The test uses a patented, innovative technology to provide highly sensitive and specific results for pregnancy.

- CLIA-waived, easy-to-use lateral flow urine test
- Cut-off level: 25 mIU/mL
- Single-step test provides positive results in as little as 3 minutes
- Sensitivity: >99%
- Specificity: >99%
- Shelf life: 24 months from date of manufacture

#92217, hCG Cassette Test
(512-0013).....40/box

CPT® Code: 80125QW†



OneStep+ Pregnancy Combo Cassette Tests

HENRY SCHEIN®

- Urine or serum test
- CLIA waived for urine only
- 25 mIU/mL detection level
- Sensitivity: 99%
- Room-temperature storage

25-Patient Kit
(900-4075).....25/box
Contains: 25 pouched tests per kit & 1 package insert.

CPT® Codes: 81025QW† (Urine); 84703† (Serum)

Alere™ hCG Combo Cassette Test (20/10 mIU/mL)

ABBOTT

The hCG Combo Cassette test provides superior performance for the detection of human chorionic gonadotropin (hCG), a hormone produced during pregnancy. A simple procedure provides easy-to-read results in 3 minutes for urine, or 5 minutes for serum.

- Sensitivity: >99%
- Specificity: >99%
- Shelf life: 24 months from date of manufacture
- CLIA-waived (for urine only), easy-to-use test
- Cut-off level: 20 mIU/mL in urine; 10 mIU/mL in serum
- Single-step test provides positive results in as little as 3 minutes for urine and 5 minutes for serum
- Highly sensitive assay with built-in control ensures accuracy
- Test can be used with either urine or serum samples

#92215, hCG Combo Cassette Test
(512-0014).....40/box

CPT® Code: hCG 81025QW† (Urine); 84703† (Serum hCG)

Combo tests are classified as moderate when testing serum samples.



OneStep+ Pregnancy Strip Tests

HENRY SCHEIN®

Rapid, chromatographic immunoassay for the qualitative detection of human chorionic gonadotropin (hCG) in urine to aid in the early detection of pregnancy.

- Urine test
- CLIA waived
- 25 mIU/mL detection level
- Sensitivity: 99%
- Room-temperature storage
- Read time 3 minutes or less

(900-4072).....25/box
Contains: 25 pouched tests per kit & 1 package insert.

CPT® Code: 81025QW† (Urine)



QuickVue® One-Step hCG Combo Tests and Control Sets

QUIDELORTHO

- CLIA waived for urine only
- Results in 5 minutes (serum), 3 minutes (urine)
- 25 mIU/mL sensitivity (urine), 10 mIU sensitivity (serum)
- Sensitivity: 99%
- Specificity: 99%
- Built-in controls for CLIA compliance
- Made in the USA

#20110 Combo Tests
(227-7244).....50/box

#00272, Control Set (Urine)
(227-4849).....ea

#00281, Control Set (Serum)
(227-5659).....ea

CPT® Codes: 81025† (Urine hCG); 84703† (Serum hCG)

(Combo tests are classified as moderate when testing serum samples.)



Clinitest® hCG Pregnancy Tests

SIEMENS HEALTHINEERS

hCG test cassette for use with the Clinitek Status® Analyzer. Quick, reliable, instrument-read results eliminate interpretation and provide accurate results for your patient.

- CLIA waived
- 99% accuracy
- Sensitivity equal to or greater than 25 mIU/mL
- Time frame: 5 minutes
- Room-temperature storage

#1760
(186-4896).....25/box

CPT® Code: 84703QW†

Urispec™ Plus Urinalysis Reader & Urispec™ 11-Way Urine Strip Promotion

HENRY SCHEIN®

Provides dependable urine status results to detect early stages of many diseases, such as diabetes, kidney disease, and urinary tract infections. Instrument-read results have long proven to be advantageous for both busy health care professionals and patients. Comprehensive interface options and the optimized printouts minimize risk associated with manual transcriptions. Reliable results can be obtained virtually immediately at the point of care.

- CLIA-waived
- Readings eliminate subjectivity of visual color interpretation, which makes urinalysis simpler and more reliable
- Features no-touch operation: After strip placement, measurement starts automatically, which makes urinalysis faster and more hygienic
- Easy switch between different test strips: Urispec Plus is for use with Urispec 11-Way, 5-Way Plus, 4-Way, and GP+A urine test strips

(570-1309).....ea
Contains: 1 Urispec® Plus Urinalysis Reader & 12 bottles of Urispec™ 11-Way Urine Strips.

Small Reader Paper

HENRY SCHEIN®

Can be used on small analyzers like the Urispec® Plus and other manufacturers' units, including the NanoEnTek FREND™. 57 mm x 32 ft

(900-4163).....6 rolls/pkg

Urispec™ 5-Way Plus Urine Reagent Test Strips

HENRY SCHEIN®

- Tests for glucose, blood, protein, nitrite, leukocytes, and urobilinogen
- Strips for visual read or for use with the Henry Schein Urispec Plus Urinalysis Reader only

(900-7508).....100/btl

CPT® Codes: 81000†/81001†/81002†/81003†



Urispec™ 4-Way Urine Reagent Strips

HENRY SCHEIN®

- Protein, nitrite, glucose, and leukocytes
- Ideal for OB/GYN
- Infection, diabetes, and kidney function
- Dip and read in 60 seconds
- Strips for visual read or for use with Urispec Plus Urinalysis Reader

(107-7157).....100/btl

CPT® Codes: 81000†/81001†/81002†/81003†



Urispec™ GP+A Urine Reagent Test Strips

HENRY SCHEIN®

Test for glucose and protein, with an ascorbic acid test for accuracy.

- Protein and glucose
- Ideal for metabolic, kidney, and diabetic monitoring
- Dip and read in 60 seconds
- Strips for visual read or for use with Urispec Plus Urinalysis Reader

(100-6567).....100/btl

CPT® Codes: 81000†/81001†/81002†/81003†



Compare to Hydratrend

Urispec™ 11-Way Urine Reagent Test Strips

HENRY SCHEIN®

Urine Reagent Test Strips

- Unique “read all” feature at 60 seconds
- Similar to Multistix® 10 SG Plus Ascorbic Acid Test and all brands of 10 SG products
- Glucose, bilirubin, ketone, specific gravity, blood, pH, protein, urobilinogen, nitrite, and leukocytes
- Reader available
- Ascorbic acid pad to ensure uncompromised results
- Room-temperature storage
- Strips for visual read or for use with Urispec Plus Urinalysis Reader

(102-2285).....100/btl

CPT® Codes: 81000†/81001†/81002†/81003†



Urispec™ Pro 2 GP Urine Strips

HENRY SCHEIN®

Strips for Visual Read
Tests for glucose and protein.

- Made in the USA

(900-4996).....100/btl

CPT® Codes: 81000†/81001†/81002†/81003†



Urispec™ 5 OB Urine Strips

HENRY SCHEIN®

Strips for Visual Read
Tests for glucose, protein, blood, nitrites, and leukocytes.

- Made in the USA

(900-4995).....100/btl

CPT® Codes: 81000†/81001†/81002†/81003†



Urispec™ 10SG Urine Strips

HENRY SCHEIN®

Strips for Visual Read
Tests for glucose, bilirubin, ketone, urobilinogen, specific gravity, blood, pH, protein, nitrites, and leukocytes.

- Made in the USA

(900-4994).....100/btl

CPT® Codes: 81000†/81001†/81002†/81003†



Urispec™ Urinalysis Controls

HENRY SCHEIN®

For Most Brands of Routine Urine Dip Sticks and Pregnancy Tests

A bilevel product packaged in plastic tubes and dropper bottles. Controls are liquid, ready-to-use, and are designed to validate urinalysis reagent strips. Packaged in plastic dip tubes and dropper bottles, they are convenient and easy to use. Long open- and closed-vial stability at 2°C–8°C for 2 years unopened, or 90 days once the Dip Control is opened, and 180 days once the Drop Control is opened. This allows the user ample time to utilize the product before expiration, resulting in cost savings.

- Values for all pregnancy test brands
- Assays for common brands of urine dip for routine urinalysis (2 parameter-10SG)
- Includes values for microalbumin, creatinine, and hCG
- Two distinct levels (normal and abnormal)
- Closed-vial dating up to 2 years with refrigerator storage
- 30-day stability at room temperature

3 Bilevel Sets, 15 mL/Tube (6 Vials)

Dip stick in tube, with open-vial stability of 90 days at 2°C–8°C.

(112-6841).....ea



2 Bilevel Sets, 25 mL/Dropper Bottle (4 Bottles)
Open-vial stability of 180 days at 2°C–8°C.

(112-6842).....ea



To Order: **1-800-772-4346** 8am–8pm (et)
henryschein.com/medical

*California customers please use website
 when ordering for Prop 65 information.*

Due to manufacturer price increases, prices are subject to change without notification. Offer valid on our full array of products. Upon any request by Medicare, Medicaid, Tricare or other payer, you must report the value of any benefit received from a discount program (e.g., points redemptions, gifts or other special awards). ©2025 Henry Schein, Inc. No copying without permission.

Not responsible for typographical errors. No adjustments from prior sales. Offer not to be combined with other promotions and/or special contract pricing. Void where prohibited. Local regulatory requirements may apply to use or installation of certain products. It is your responsibility to understand and comply with any such requirements prior to purchase, use or installation of products. †For informational purposes only.

Source: ReimbursementCodes.com and/or www.cms.gov.
 Customer is responsible for verification of billing/coding in accordance with applicable specific circumstances.

PRSRT STD
 U.S. POSTAGE
PAID
 HENRY SCHEIN, INC.

A FRIENDLY REMINDER TO RECYCLE—
 Thank you for helping us care for the environment.



RELY ON US™ FOR YOUR 2025–2026 FLU VACCINE NEEDS!



A Flu Vaccine Program you can trust from **A COMPANY YOU CAN RELY ON**

This is our 19th year of offering the Worry-Free Guarantee Flu Vaccine Program,
 more than 91 years of expertise in pharmaceuticals!



Market-Leading Brands

- Seqirus Flucelvax® Trivalent, Afluria® Trivalent, and Flud® Trivalent
- Sanofi Fluzone® Trivalent, Fluzone® HD Trivalent, and Flublok® Trivalent
- GSK Fluarix® Trivalent and Flulaval® Trivalent



Product Choice to Meet All Your Needs

- Adult and Pediatric
- Multi-dose Vials and Prefilled Syringes
- Cell Culture and Egg-based Options Available



sanofi

GSK

WORRY-FREE PROGRAM COMPONENTS

ASK YOUR SALES CONSULTANT FOR DETAILS!

- Guaranteed Ship By Date
- Extended Payment Terms to 12/18/2025†
- Return Privilege*
- Option to increase quantity at time of order or later in the season**
- Discounts on ancillary and companion items during flu season
- Flu Practice Marketing Kit***

Visit **www.henryschein.com/flu**

*Offer good on minimum purchase of 7 vials and/or packs of Flucelvax, Afluria, Flud, Fluzone, Flublok, Fluarix and Flulaval. Returns must be in complete unopened vials or packs of syringes and allowable return percentage is specific to brand. Ask your sales consultant for more information. Returns will be in a form of a credit toward next year's flu purchases. Allowable flu vaccine returns must be received back to Henry Schein, Inc. between February 1, 2026 and April 30, 2026 for full returns credit.

Subject to availability. *Not available in California. †Subject to credit approval.

©2025 Henry Schein, Inc. No copying without permission. Not responsible for typographical errors.