



12
YEARS
EXP

I liked the grip on the handles, which improved tactile sensitivity.

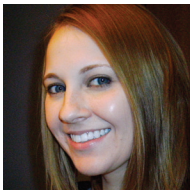
Jessica Raymond-Allbritten, CRDH, BSDH, Clearwater, FL



44
YEARS
EXP

The probe featured very clear and easy-to-read etched markings.

Donna Grzegorek, BS, RDH, PHDH, FADHA, South Barrington, IL



20
YEARS
EXP

Anyone who loves a double-sided mirror with a crystal-clear image should try these.

Sherry Morrissey, RDH, CDA, Grand Forks, ND

HENRY SCHEIN PRODUCTS

ACCLEAN Diagnostic Instruments

Designed in collaboration with hygienists, these durable, ergonomic diagnostic instruments effectively aid in evaluating patients' oral health

Diagnostic instruments are used every day and must be ergonomically friendly, clinically effective, and cost-effective," said hygienist Donna Grzegorek, who practices in South Barrington, IL. "The ACCLEAN Diagnostic Instruments from Henry Schein did a great job in meeting those prerequisites for me."

Developed in collaboration with hygienists, ACCLEAN Diagnostic Instruments offer a durable stainless-steel construction and comfortable, textured surface for enhanced control and precision during patient exams.

"We were happy to be introduced to ACCLEAN Diagnostic Instruments," Grzegorek remarked. "They provided a better chairside experience for the clinician and the patient. I included them in one of my hygiene cassettes, and it was fun when that kit showed up on my tray 2 times a day. My doctor and I both looked forward to using them."

Comfort and Grip Design

ACCLEAN Diagnostic Instruments incorporate a handle etch design and grip rings on both ends to optimize the clinician's grip and prevent slips, while the smooth surface in the center of the handle prevents glove damage or skin irritation.

Jessica Raymond-Allbritten, CRDH, BSDH, said, "I liked the grip on the handles, which improved tactile sensitivity by helping me grasp the instrument better," and hygienist Sherry Morrissey said, "The knurled grip on the instruments was easy

to hold onto and gave the products an upscale and modern look." Melanie Davis, RDH, BSDH, MEd, suggested the instruments "have a place for colored bands."

"The texture and size of the handles eliminated most, if not all, of my hand fatigue," said hygienist Donna Shewbert. "I liked that the handle has a smooth center for rolling and the etched design on the ends for control."

Hygienist Heather Locker said, "The larger grip made it much easier to hold and control the instrument without slipping, even for longer use. It significantly reduced strain on the fingers and wrist, making daily oral hygiene tasks feel a lot less burdensome."

Weight and Balance

"The instruments are very light and good to grip," Michele Byrd, RDH, commented, and hygienist Jennifer Collins agreed, saying ACCLEAN Diagnostic Instruments are "lightweight and simple." Specifically, Morrissey said, "The double-sided mirror was still lightweight despite having 2 sides to weigh it down," and Raymond-Allbritten said, "I liked the weight of the instrument handle, especially the explorer."

Previously seeking to address the weight of her instruments, Nicole Hodges, DA, found "These were lightweight and had good tactile sensitivity." Similarly, Davis described ACCLEAN Diagnostic Instruments



takeaways

- Long-lasting performance, thanks to stainless-steel construction
- Comfortable, textured surface and grip rings enhance control and precision
- Smooth surface in the center of the handle prevents glove damage or skin irritation
- Etched markings for more accurate diagnostics
- Replaceable mirror heads with scratch-resistant coating for clear viewing



Amber Metro-Sanchez, RDH, BA, Fort Wayne, IN

"This diagnostic kit contained everything that I needed to evaluate a new patient."

as "very lightweight and balanced," while Amber Bonanni, RDH, said, "The handles had a great weight and didn't feel too heavy, but still felt solid and durable."

Diagnostic Precision

ACCLEAN Diagnostic Instruments are hand-sharpened for greater efficiency. The probes feature precisely etched markings for accurate diagnosis, and the replaceable mirror heads include a scratch-resistant coating to further ensure clear visibility in virtually any area of the mouth.

"The probe featured very clear and easy-to-read etched markings for accurate diagnosis," Grzegorek said, noting that when her doctor wanted an exact measurement, "he preferred the metal probe sent for this evaluation, as there is no flex when in use. He even asked for it a few times over the plastic probes in most of my exam kits."

While Collins believed the "clarity of the mirror heads" could be improved, Byrd said, "The mirror was my favorite. The double sides allowed me to retract and still utilize the mirror," and Morrissey said, "The double-sided mirror was amazing in how clear the image was. Anyone who loves a double-sided mirror with a crystal-clear image should try these."

"I felt the double-sided mirror provided great visibility and was a great size for use in all areas of the mouth," Bonanni agreed. "The probe also had good angulation and was easy to use."

"I had a patient with a small mouth, and I was trying to visualize the distal of her second molars," Amber Metro-Sanchez, RDH, recalled. "The wide arm of the mirror made it comfortable for me to access this challenging area and evaluate it in detail."

Overall Satisfaction

"This diagnostic kit contained everything that I needed to evaluate a new patient and efficiently determine their treatment needs," Metro-Sanchez assured. When asked what she would like to see improved, Shewbert replied,

"I can't think of anything at this time," and Raymond-Allbritten echoed her sentiment, saying, "Nothing—I think it's a great product."

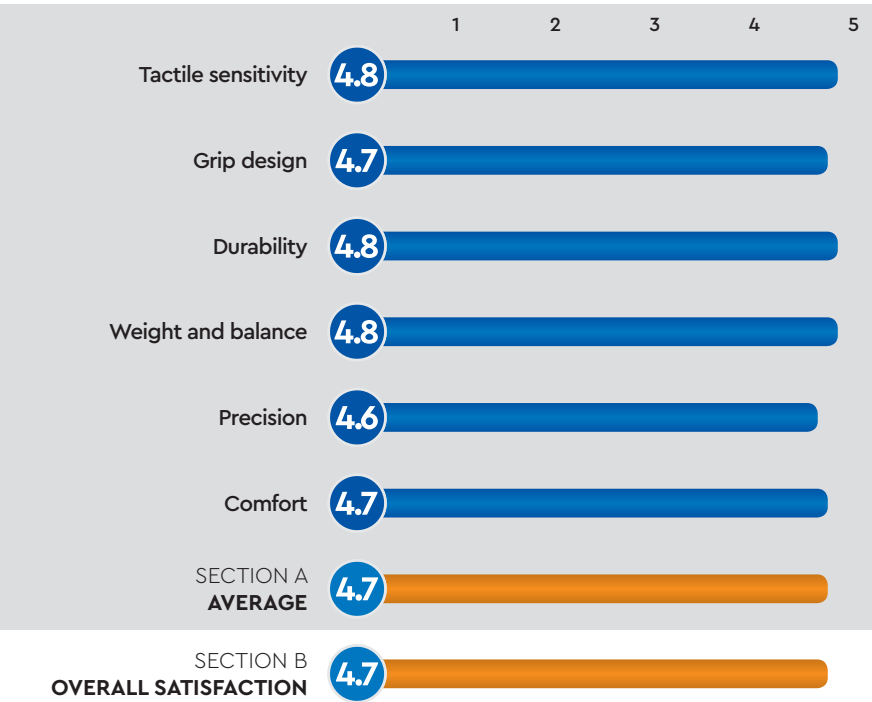
She concluded, "ACCLEAN by Henry Schein is known to have great products that are durable, comfortable, and help improve the clinician's tactile sensitivity. These diagnostic instruments fit right into the lineup of good-quality instruments with competitive pricing."

FOR MORE INFORMATION:

800.372.4346
www.henryscheindental.com/acclean

PRODUCT REVIEW SNAPSHOT

CRITERIA BASED ON AVERAGE SCORE (OUT OF 5)



HENRY SCHEIN PRODUCTS
ACCLEAN DIAGNOSTIC INSTRUMENTS

FINAL SCORE
AVERAGE OF SECTIONS A AND B

4.7

Dental PRODUCT SHOPPER
BEST PRODUCT